

ab108844 – Fibrinogen Mouse ELISA Kit

Instructions for Use

For the quantitative measurement of mouse Fibrinogen in plasma.

This product is for research use only and is not intended for diagnostic use.

Table of Contents

INTRODUCTION

1. BACKGROUND	2
2. ASSAY SUMMARY	3

GENERAL INFORMATION

3. PRECAUTIONS	4
4. STORAGE AND STABILITY	4
5. MATERIALS SUPPLIED	4
6. MATERIALS REQUIRED, NOT SUPPLIED	4
7. LIMITATIONS	5
8. TECHNICAL HINTS	6

ASSAY PREPARATION

9. REAGENT PREPARATION	7
10. STANDARD PREPARATIONS	8
11. SAMPLE PREPARATION	11
12. PLATE PREPARATION	12

ASSAY PROCEDURE

13. ASSAY PROCEDURE	13
---------------------	----

DATA ANALYSIS

14. CALCULATIONS	15
15. TYPICAL DATA	16
16. TYPICAL SAMPLE VALUES	17
17. ASSAY SPECIFICITY	18

RESOURCES

18. TROUBLESHOOTING	19
19. NOTES	21

1. BACKGROUND

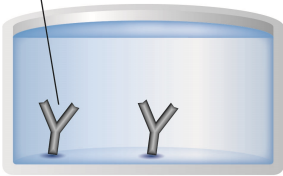
Abcam's Fibrinogen Mouse *in vitro* competitive ELISA (enzyme-linked immunosorbent assay) kit is designed for the quantitative measurement of mouse fibrinogen in plasma.

A Fibrinogen specific antibody has been precoated onto 96-well plates and blocked. Standards or test samples are added to the wells and subsequently biotinylated Fibrinogen is added and then followed by washing with wash buffer. Streptavidin-Peroxidase Complex is added and unbound conjugates are washed away with wash buffer. TMB is then used to visualize Streptavidin-Peroxidase enzymatic reaction. TMB is catalyzed by Streptavidin-Peroxidase to produce a blue color product that changes into yellow after adding acidic stop solution. The density of yellow coloration is inversely proportional to the amount of Fibrinogen captured in plate.

Fibrinogen is a homodimer of molecular mass 340 kDa, made up of two sets of α , β , γ polypeptide chains, and synthesized in the parenchymal cell of the hepatocyte and in the megakaryocyte. Fibrinogen plays a major role in coagulation: Elevated and decreased levels have clinical significance. Upon cleavage by thrombin in the initial stages of coagulation activation, fibrinogen self-assembles to yield a fibrin clot matrix that subsequently is cross-linked by factor XIIIa to form an insoluble network. Fibrinogen also binds to the platelet glycoprotein IIb/IIIa receptor so as to form bridges between platelets, thus facilitating aggregation. Elevated plasma fibrinogen has been identified as an independent risk factor for coronary atherosclerosis and ischemic heart disease. Individuals with congenital absence of fibrinogen, termed afibrinogenemia, have prolonged bleeding times.

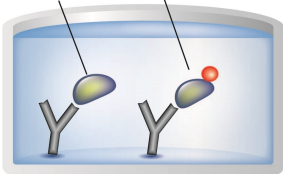
2. ASSAY SUMMARY

Primary Capture Antibody



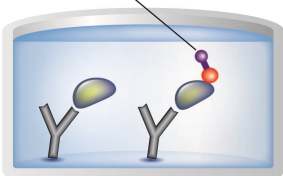
Prepare all reagents, samples and standards as instructed.

Sample Biotinylated Antigen



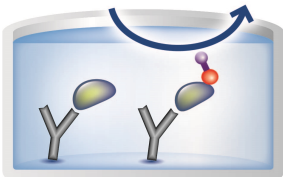
Add standard or sample to each well used and add prepared biotin protein to each well. Incubate at room temperature.

Streptavidin-HRP



Wash and add prepared Streptavidin-Peroxidase Conjugate. Incubate at room temperature.

Substrate Colored Product



Wash and add Chromogen Substrate to each well. Incubate at room temperature. Add Stop Solution to each well. Read immediately.

3. PRECAUTIONS

Please read these instructions carefully prior to beginning the assay.

Modifications to the kit components or procedures may result in loss of performance.

4. STORAGE AND STABILITY

Store kit at 4°C immediately upon receipt, apart from the SP Conjugate, which should be stored at -20°C.

Refer to list of materials supplied for storage conditions of individual components. Observe the storage conditions for individual prepared components in sections 9 & 10.

5. MATERIALS SUPPLIED

Item	Amount	Storage Condition (Before Preparation)
Fibrinogen Microplate (12 x 8 well strips)	96 wells	4°C
Fibrinogen Standard	1 vial	4°C
10X Diluent N Concentrate	30 mL	4°C
Biotinylated Mouse Fibrinogen (Lyophilized)	1 vial	4°C
100X Streptavidin-Peroxidase Conjugate (SP Conjugate)	80 µL	-20°C
Chromogen Substrate	7 mL	4°C
Stop Solution	11 mL	4°C
20X Wash Buffer Concentrate	30 mL	4°C
Sealing Tapes	3	N/A

6. MATERIALS REQUIRED, NOT SUPPLIED

These materials are not included in the kit, but will be required to successfully utilize this assay:

- 1 Microplate reader capable of measuring absorbance at 450 nm.
- Precision pipettes to deliver 1 μ L to 1 mL volumes.
- Adjustable 1-25 mL pipettes for reagent preparation.
- 100 mL and 1 liter graduated cylinders.
- Absorbent paper.
- Distilled or deionized water.
- Log-log graph paper or computer and software for ELISA data analysis.
- 8 tubes to prepare standard or sample dilutions.

7. LIMITATIONS

- Do not mix or substitute reagents or materials from other kit lots or vendors.

8. TECHNICAL HINTS

- Samples generating values higher than the highest standard should be further diluted in the appropriate sample dilution buffers.
- Avoid foaming or bubbles when mixing or reconstituting components.
- Avoid cross contamination of samples or reagents by changing tips between sample, standard and reagent additions.
- Ensure plates are properly sealed or covered during incubation steps.
- Complete removal of all solutions and buffers during wash steps.
- **This kit is sold based on number of tests. A ‘test’ simply refers to a single assay well. The number of wells that contain sample, control or standard will vary by product. Review the protocol completely to confirm this kit meets your requirements. Please contact our Technical Support staff with any questions.**

9. REAGENT PREPARATION

Equilibrate all reagents to room temperature (18-25°C) prior to use. Prepare fresh reagents immediately prior to use. If crystals have formed in the concentrate, mix gently until the crystals have completely dissolved.

9.1 1X Diluent N

Dilute the 10X Diluent N Concentrate 1:10 with reagent grade water to produce a 1x solution. When diluting the concentrate, make sure to rinse the bottle thoroughly to extract any precipitates left in the bottle. Mix the 1X solution gently until the crystals have completely dissolved. Store for up to 1 month at 4°C.

9.2 1X Wash Buffer

Dilute the 20X Wash Buffer Concentrate 1:20 with reagent grade water to produce a 1X solution. When diluting the concentrate, make sure to rinse the bottle thoroughly to extract any precipitates left in the bottle. Mix the 1X solution gently until the crystals have completely dissolved.

9.3 1X Biotinylated Mouse Fibrinogen Protein

Add 5mL 1X Diluent N to the lyophilized Biotinylated Fibrinogen Protein vial to generate a stock solution. Allow the stock solution to sit for 10 minutes with gentle agitation prior to dilution. Aliquot remaining stock solution to limit repeated freeze-thaw cycles. This solution should be stored at -20°C and used within 7 days.

9.4 1X SP Conjugate

Spin down the 100X Streptavidin-Peroxidase Conjugate (SP Conjugate) briefly and dilute the desired amount of the conjugate 1:100 with 1X Diluent N to produce a 1X solution. The undiluted conjugate should be stored at -20°C.

10. STANDARD PREPARATIONS

- Prepare serially diluted standards immediately prior to use. Always prepare a fresh set of standards for every use.
- Any remaining standard should be stored at -20°C after reconstitution and used within 30 days.
- This procedure prepares sufficient standard dilutions for duplicate wells.

10.1 Reconstitution of the Fibrinogen Standard vial to prepare the 20 µg/mL Fibrinogen **Standard #1**:

10.1.1 First consult the Fibrinogen Standard vial to determine the mass of protein in the vial.

10.1.2 Calculate the appropriate volume of 1X Diluent N to add when resuspending the Fibrinogen Standard vial to produce a 20 µg/mL Fibrinogen **Standard #1** by using the following equation:

C_S = Starting mass of Fibrinogen Standard (see vial label) (µg)

C_F = The 20 µg/mL Fibrinogen **Standard #1** final required concentration

V_D = Required volume of 1X Diluent N for reconstitution (µL)

Calculate total required volume 1X Diluent N for resuspension:

$$(C_S / C_F) \times 1,000 = V_D$$

Example:

NOTE: This example is for demonstration purposes only. Please remember to check your standard vial for the actual amount of standard provided.

C_S = 40 µg of Fibrinogen Standard in vial

C_F = 20 µg/mL Fibrinogen **Standard #1** final concentration

V_D = Required volume of 1X Diluent N for reconstitution

$$(40 \mu\text{g} / 20 \mu\text{g/mL}) \times 1,000 = 2,000 \mu\text{L}$$

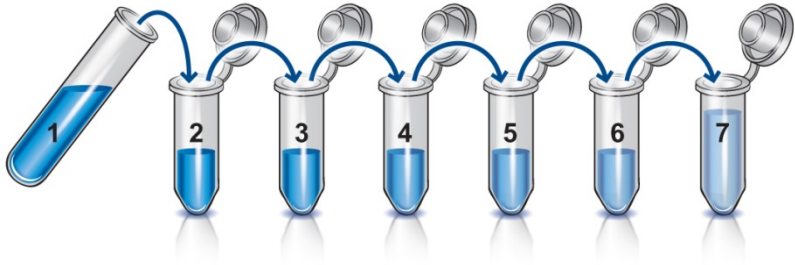
ASSAY PREPARATION

- 10.1.3 First briefly spin the Fibrinogen Standard vial to collect the contents on the bottom of the tube.
- 10.1.4 Reconstitute the Fibrinogen Standard vial by adding the appropriate calculated amount V_D of 1X Diluent N to the vial to generate the 20 $\mu\text{g/mL}$ **Standard #1**. Mix gently and thoroughly.
- 10.2 Allow the reconstituted 20 $\mu\text{g/mL}$ **Standard #1** to sit for 10 minutes with gentle agitation prior to making subsequent dilutions
- 10.3 Label tubes #2 – 6.
- 10.4 Add 120 μL of 1X Diluent N to tube #2 – 6.
- 10.5 To prepare **Standard #2**, add 120 μL of the **Standard #1** into tube #2 and mix gently.
- 10.6 To prepare **Standard #3**, add 120 μL of the **Standard #2** into tube #3 and mix gently.
- 10.7 Using the table below as a guide, prepare subsequent serial dilutions.
- 10.8 1X Diluent N serves as the zero standard, 0 $\mu\text{g/mL}$ (tube #6)

ASSAY PREPARATION

Standard Dilution Preparation Table

Standard #	Volume to Dilute (μL)	Volume Diluent N (μL)	Total Volume (μL)	Final Conc. ($\mu\text{g}/\text{mL}$)
1	Step 10.1			20.00
2	120	120	240	10.00
3	120	120	240	5.00
4	120	120	240	2.50
5	120	120	240	1.25
6	-	120	120	0.0



11. SAMPLE PREPARATION

11.1 **Plasma**

Collect plasma using one-tenth volume of 0.1 M sodium citrate as an anticoagulant. Centrifuge samples at 3000 x *g* for 10 minutes and collect plasma. A 1:500 dilution into Diluent N is suggested; however user should determine optimal dilution factor depending on application needs. The undiluted samples can be stored at -20°C or below for up to 3 months. Avoid repeated freeze-thaw cycles.

12. PLATE PREPARATION

- The 96 well plate strips included with this kit are supplied ready to use. It is not necessary to rinse the plate prior to adding reagents.
- Unused well plate strips should be returned to the plate packet and stored at 4°C.
- For statistical reasons, we recommend each sample should be assayed with a minimum of two replicates (duplicates).
- Well effects have not been observed with this assay. Contents of each well can be recorded on the template sheet included in the Resources section.

13. ASSAY PROCEDURE

- **Equilibrate all materials and prepared reagents to room temperature (18-25°C) prior to use.**
- **It is recommended to assay all standards, controls and samples in duplicate.**

13.1 Prepare all reagents, working standards and samples as instructed. Equilibrate reagents to room temperature before use. The assay is performed at room temperature (18-25°C).

13.2 Remove excess microplate strips from the plate frame and return them immediately to the foil pouch with desiccant inside. Reseal the pouch securely to minimize exposure to water vapor and store in a vacuum desiccator.

13.3 Add 25 μ L of Fibrinogen Standard or sample per well.

13.4 Immediately add 25 μ L of Biotinylated Fibrinogen to each well, on top of the standard or sample. Gently tap plate to ensure thorough mixing. Break any bubbles that may have formed. Cover wells with a sealing tape and incubate for two hours at room temperature. Start the timer after the last sample addition.

13.5 Wash five times with 200 μ L of 1X Wash Buffer manually. Invert the plate each time and decant the contents; tap it 4-5 times on absorbent paper towel to completely remove the liquid. If using a machine wash six times with 300 μ L of 1X Wash Buffer and then invert the plate, decant the contents; tap it 4-5 times on absorbent paper towel to completely remove the liquid.

13.6 Add 50 μ L of 1X SP Conjugate to each well. Gently tap plate to thoroughly coat the wells. Break any bubbles that may have formed. Cover wells with a sealing tape and incubate for 30 minutes. Turn on the microplate reader and set up the program in advance.

13.7 Wash microplate as described above.

- 13.8 Add 50 μL of Chromogen Substrate per well. Gently tap plate to thoroughly coat the wells. Break any bubbles that may have formed. Cover wells with a sealing tape and incubate for 15 minutes or until the optimal blue colour density develops.
- 13.9 Add 50 μL of Stop Solution to each well. The color will change from blue to yellow. Gently tap plate to ensure thorough mixing. Break any bubbles that may have formed.
- 13.10 Read the absorbance on a microplate reader at a wavelength of 450 nm immediately. If wavelength correction is available, subtract readings at 570 nm from those at 450 nm to correct optical imperfections. Otherwise, read the plate at 450 nm only. Please note that some unstable black particles may be generated at low concentration points after stopping the reaction for about 10 minutes, which will reduce the readings.

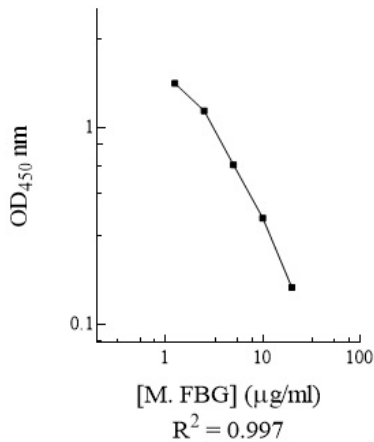
14. CALCULATIONS

Calculate the mean value of the triplicate readings for each standard and sample. To generate a Standard Curve, plot the graph using the standard concentrations on the x-axis and the corresponding mean 450 nm absorbance on the y-axis. The best-fit line can be determined by regression analysis using log-log or four-parameter logistic curve-fit. Determine the unknown sample concentration from the Standard Curve and multiply the value by the dilution factor

15. TYPICAL DATA

TYPICAL STANDARD CURVE – Data provided for demonstration purposes only. A new standard curve must be generated for each assay performed.

Mouse FBG Standard Curve



16. TYPICAL SAMPLE VALUES

SENSITIVITY –

The minimum detectable dose of Mouse Fibrinogen is typically 1.1 µg/mL.

SPIKING RECOVERY –

Recovery was determined by spiking one plasma and one reference control sample with different FBG concentrations.

Sample	Unspiked Sample (µg/ml)	Spiking Value (µg/ml)	Expected	Observed	Recovery (%)
Plasma	4.021	4.202	8.223	7.492	91
		1.752	5.773	5.620	97
		0.905	4.926	4.702	95
Reference control	1.364	4.202	5.566	5.079	91
		1.752	3.116	2.856	92
		0.905	2.269	2.111	93
Average Recovery (%)					93

LINEARITY OF DILUTION –

Plasma Dilution	Average % Expected Value
1:250	90
1:500	102
1:1000	110

PRECISION –

	Intra-Assay	Inter-Assay
% CV	4.8	10.2

17. ASSAY SPECIFICITY

Species	% Cross Reactivity
Canine	None
Bovine	None
Monkey	None
Human	None
Rat	None
Swine	None
Rabbit	None
Mouse	100

18. TROUBLESHOOTING

Problem	Cause	Solution
Poor standard curve	Improper standard dilution	Confirm dilutions made correctly
	Standard improperly reconstituted (if applicable)	Briefly spin vial before opening; thoroughly resuspend powder (if applicable)
	Standard degraded	Store sample as recommended
	Curve doesn't fit scale	Try plotting using different scale
Low signal	Incubation time too short	Try overnight incubation at 4°C
	Target present below detection limits of assay	Decrease dilution factor; concentrate samples
	Precipitate can form in wells upon substrate addition when concentration of target is too high	Increase dilution factor of sample
	Using incompatible sample type (e.g. serum vs. cell extract)	Detection may be reduced or absent in untested sample types
	Sample prepared incorrectly	Ensure proper sample preparation/dilution
Large CV	Bubbles in wells	Ensure no bubbles present prior to reading plate
	All wells not washed equally/thoroughly	Check that all ports of plate washer are unobstructed wash wells as recommended
	Incomplete reagent mixing	Ensure all reagents/master mixes are mixed thoroughly
	Inconsistent pipetting	Use calibrated pipettes and ensure accurate pipetting
	Inconsistent sample preparation or storage	Ensure consistent sample preparation and optimal sample storage conditions (eg. minimize freeze/thaws cycles)

RESOURCES

Problem	Cause	Solution
High background/ Low sensitivity	Wells are insufficiently washed	Wash wells as per protocol recommendations
	Contaminated wash buffer	Make fresh wash buffer
	Waiting too long to read plate after adding STOP solution	Read plate immediately after adding STOP solution
	Improper storage of ELISA kit	Store all reagents as recommended. Please note all reagents may not have identical storage requirements.
	Using incompatible sample type (e.g. Serum vs. cell extract)	Detection may be reduced or absent in untested sample types

19. NOTES



Technical Support

Copyright © 2025 Abcam. All Rights Reserved. The Abcam logo is a registered trademark. All information / detail is correct at time of going to print.

For all technical or commercial enquiries please go to:

www.abcam.com/contactus

www.abcam.cn/contactus (China)

www.abcam.co.jp/contactus (Japan)