

Version 9b Last updated 18 March 2026

ab173194

Human IP-10

SimpleStep ELISA[®] Kit

(CXCL10)

For the quantitative measurement of IP-10 (CXCL10) in human serum and plasma samples.

This product is for research use only and is not intended for diagnostic use.

Table of Contents

1. Overview	1
2. Protocol Summary	2
3. Precautions	3
4. Storage and Stability	3
5. Limitations	4
6. Materials Supplied	4
7. Materials Required, Not Supplied	4
8. Technical Hints	6
9. Reagent Preparation	7
10. Standard Preparation	8
11. Sample Preparation	9
12. Plate Preparation	10
13. Assay Procedure	11
14. Calculations	13
15. Typical Data	14
16. Typical Sample Values	15
17. Assay Specificity	19
18. Species Reactivity	19
19. Troubleshooting	20
20. Notes	21
Technical Support	22

1. Overview

IP-10 (CXCL10) in vitro SimpleStep ELISA® kit is designed for the accurate quantitative measurement of IP-10 protein in human serum and plasma samples.

The SimpleStep ELISA® employs an affinity tag labeled capture antibody and a reporter conjugated detector antibody which immunocapture the sample analyte in solution. This entire complex (capture antibody/analyte/detector antibody) is in turn immobilized via immunoaffinity of an anti-tag antibody coating the well. To perform the assay, samples or standards are added to the wells, followed by the antibody mix. After incubation, the wells are washed to remove unbound material. TMB Development Solution is added and during incubation is catalyzed by HRP, generating blue coloration. This reaction is then stopped by addition of Stop Solution completing any color change from blue to yellow. Signal is generated proportionally to the amount of bound analyte and the intensity is measured at 450 nm. Optionally, instead of the endpoint reading, development of TMB can be recorded kinetically at 600 nm.

C-X-C motif chemokine 10 (CXCL10 or IP-10) is a small 10.8kD protein that is secreted by several cell types in response to interferon-gamma (IFN γ). These cell types include monocytes, endothelial cells and fibroblasts. Upon secretion, CXCL10 is cleaved into an 8.7kD biologically active protein to function in chemotaxis for T-cells, NK cells, monocytes/macrophages and dendritic cells. In addition, CXCL10 has antitumor activity through the inhibition of bone marrow colony formation and angiogenesis. CXCL10 elicits its effects by binding to the cell surface chemokine receptor 3 (CXCR3).

2. Protocol Summary

Prepare all reagents, samples, and standards as instructed



Add 50 μ L standard or sample to appropriate wells



Add 50 μ L Antibody Cocktail to all wells



Incubate at room temperature for 1 hour



Aspirate and wash each well three times with 350 μ L 1X Wash Buffer



Add 100 μ L TMB Development Solution to each well and incubate for 15 minutes.



Add 100 μ L Stop Solution and read OD at 450 nm

3. Precautions

Please read these instructions carefully prior to beginning the assay.

- All kit components have been formulated and quality control tested to function successfully as a kit.
- We understand that, occasionally, experimental protocols might need to be modified to meet unique experimental circumstances. However, we cannot guarantee the performance of the product outside the conditions detailed in this protocol booklet.
- Observe good laboratory practices. Gloves, lab coat, and protective eyewear should always be worn. Never pipet by mouth. Do not eat, drink or smoke in the laboratory areas.
- If applicable, please refer to the current Safety Data Sheet (SDS) provided with this product for safety, handling, and disposal information. The most up to date and current versions are available on our website <https://www.abcam.com/en-us>.

4. Storage and Stability

Store kit at +4°C immediately upon receipt. Kit has a storage time of 1 year from receipt, providing components have not been reconstituted.

Refer to list of materials supplied for storage conditions of individual components.

5. Limitations

- Assay kit intended for research use only. Not for use in diagnostic procedures.
- Do not mix or substitute reagents or materials from other kit lots or vendors. Kits are QC tested as a set of components and performance cannot be guaranteed if utilized separately or substituted.

6. Materials Supplied

Item	Amount 1 x 96 tests	Amount 10 x 96 tests	Storage Condition
10X IP-10 Capture Antibody	600 µL	10 x 600 µL	+4°C
10X IP-10 Detector Antibody	600 µL	10 x 600 µL	+4°C
Human IP-10 Lyophilized Recombinant Protein	2 vials	20 vials	+4°C
Antibody Diluent CPI2	6 mL	10 x 6 mL	+4°C
10X Wash Buffer PT	20 mL	200 mL	+4°C
TMB Development Solution	12 mL	120 mL	+4°C
Stop Solution	12 mL	120 mL	+4°C
Sample Diluent NS	50 mL	2 x 250 mL	+4°C
Anti-tag coated microplate (12 x 8 well strips)	96 Wells	10 x 96 Wells	+4°C
Plate Seal	1	10	+4°C

Note: Antibody Diluent CPI2- This buffer has been reformulated to enhance stability after freeze-thaw cycles while producing data equivalent to the original formulation of antibody diluent CPI previously used in this kit.

While we run stock down, you may receive kits containing antibody diluent CPI. This does not affect the way you should use the kit.

If you have any questions please contact Abcam Scientific Support.

7. Materials Required, Not Supplied

These materials are not included in the kit, but will be required to successfully perform this assay:

- Microplate reader capable of measuring absorbance at 450 or 600 nm.
- Method for determining protein concentration (BCA assay recommended).
- Deionized water.
- PBS (1.4 mM KH₂PO₄, 8 mM Na₂HPO₄, 140 mM NaCl, 2.7 mM KCl, pH 7.4).
- Multi- and single-channel pipettes.
- Tubes for standard dilution.
- Plate shaker for all incubation steps.
- Optional: Phenylmethylsulfonyl Fluoride (PMSF) (or other protease inhibitors).
- Cell Extraction Buffer

8. Technical Hints

- Samples generating values higher than the highest standard should be further diluted in the appropriate sample dilution buffers.
- Avoid foaming or bubbles when mixing or reconstituting components.
- Avoid cross contamination of samples or reagents by changing tips between sample, standard and reagent additions.
- Ensure plates are properly sealed or covered during incubation steps.
- Complete removal of all solutions and buffers during wash steps is necessary to minimize background.
- As a guide, typical ranges of sample concentration for commonly used sample types are shown below in Sample Preparation (section 11).
- All samples should be mixed thoroughly and gently.
- Avoid multiple freeze/thaw of samples.
- Incubate ELISA plates on a plate shaker during all incubation steps.
- When generating positive control samples, it is advisable to change pipette tips after each step.
- **To avoid high background always add samples or standards to the well before the addition of the antibody cocktail.**
- **This kit is sold based on number of tests. A 'test' simply refers to a single assay well. The number of wells that contain sample, control or standard will vary by product. Review the protocol completely to confirm this kit meets your requirements. Please contact our Technical Support staff with any questions.**

9. Reagent Preparation

- Equilibrate all reagents to room temperature (18-25°C) prior to use. The kit contains enough reagents for 96 wells. The sample volumes below are sufficient for 48 wells (6 x 8-well strips); adjust volumes as needed for the number of strips in your experiment.
- Prepare only as much reagent as is needed on the day of the experiment. Capture and Detector Antibodies have only been tested for stability in the provided 10X formulations.

9.1 1X Wash Buffer PT

Prepare 1X Wash Buffer PT by diluting 10X Wash Buffer PT with deionized water. To make 50 mL 1X Wash Buffer PT combine 5 mL 10X Wash Buffer PT with 45 mL deionized water. Mix thoroughly and gently.

9.2 Antibody cocktail

Prepare Antibody Cocktail by diluting the capture and detector antibodies in Antibody Diluent CPI2. To make 3 mL of the Antibody Cocktail combine 300 µL 10X Capture Antibody and 300 µL 10X Detector Antibody with 2.4 mL Antibody Diluent CPI2. Mix thoroughly and gently.

10. Standard Preparation

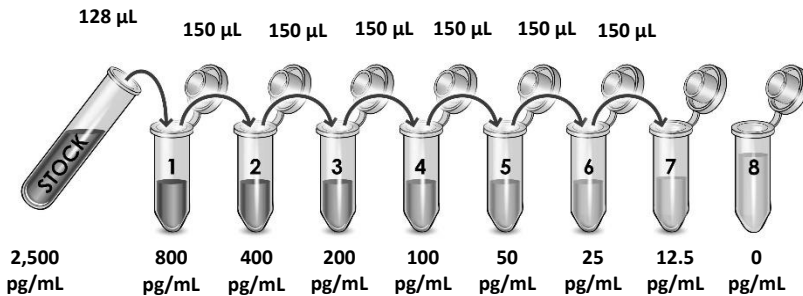
- Always prepare a fresh set of standards for every use.
- Discard working standard dilutions after use as they do not store well.
- The following section describes the preparation of a standard curve for duplicate measurements (recommended).

10.1 IMPORTANT: If the protein standard vial has a volume identified on the label, reconstitute the IP-10 standard by adding that volume of Sample Diluent NS indicated on the label. Alternatively, if the vial has a mass identified, reconstitute the IP-10 standard by adding 500 μL Sample Diluent NS. Hold at room temperature for 10 minutes and mix gently. This is the 2,500 pg/mL **Stock Standard** Solution

10.2 Label seven tubes, Standards 1– 8.

10.3 Add 272 μL of Sample Diluent NS into tube number 1 and 150 μL of Sample Diluent NS into numbers 2-7.

10.4 Use the Stock Standard to prepare the following dilution series. Standard **#8** contains no protein and is the Blank control:



11. Sample Preparation

TYPICAL SAMPLE DYNAMIC RANGE	
Sample Type	Range
PBMC conditioned media (+ PHA)	1:7,300 – 1:10
PBMC conditioned media (- PHA)	1:300 - Neat
Human serum	1:50 – Neat
Human plasma (Sodium Citrate)	1:50 – Neat
Human plasma (EDTA)	1:50 – Neat
Human plasma (Heparin)	1:50 – Neat

11.1 Plasma:

Collect plasma using citrate, EDTA or heparin. Centrifuge samples at 2,000 x g for 10 minutes. Dilute samples into Sample Diluent NS and assay. Store un-diluted plasma samples at -20°C or below for up to 3 months. Avoid repeated freeze-thaw cycles.

11.2 Serum:

Samples should be collected into a serum separator tube. After clot formation, centrifuge samples at 2,000 x g for 10 minutes and collect serum. Dilute samples into Sample Diluent NS and assay. Store un-diluted serum at -20°C or below. Avoid repeated freeze-thaw cycles.

11.3 Cell Culture Supernatants:

Centrifuge cell culture media at 2,000 x g for 10 minutes to remove debris. Collect supernatants and assay. Store samples at -20°C or below. Avoid repeated freeze-thaw cycles.

12. Plate Preparation

- The 96 well plate strips included with this kit are supplied ready to use. It is not necessary to rinse the plate prior to adding reagents.
- Unused plate strips should be immediately returned to the foil pouch containing the desiccant pack, resealed and stored at 4°C.
- For each assay performed, a minimum of two wells must be used as the zero control.
- For statistical reasons, we recommend each sample should be assayed with a minimum of two replicates (duplicates).
- Differences in well absorbance or “edge effects” have not been observed with this assay.

13. Assay Procedure

- Equilibrate all materials and prepared reagents to room temperature prior to use.
- We recommend that you assay all standards, controls and samples in duplicate.

13.1 Prepare all reagents, working standards, and samples as directed in the previous sections.

13.2 Remove excess microplate strips from the plate frame, return them to the foil pouch containing the desiccant pack, reseal and return to 4°C storage.

13.3 Add 50 µL of all sample or standard to appropriate wells.

13.4 Add 50 µL of the Antibody Cocktail to each well.

13.5 Seal the plate and incubate for 1 hour at room temperature on a plate shaker set to 400 rpm.

13.6 Wash each well with 3 x 350 µL 1X Wash Buffer PT. Wash by aspirating or decanting from wells then dispensing 350 µL 1X Wash Buffer PT into each well. Wash Buffer PT should remain in wells for at least 10 seconds. Complete removal of liquid at each step is essential for good performance. After the last wash invert the plate and tap gently against clean paper towels to remove excess liquid.

13.7 Add 100 µL of TMB Development Solution to each well and incubate for 15 minutes in the dark on a plate shaker set to 400 rpm.

Given variability in laboratory environmental conditions, optimal incubation time may vary between 5 and 20 minutes.

Note: The addition of Stop Solution will change the color from blue to yellow and enhance the signal intensity about 3X. To avoid signal saturation, proceed to the next step before the high concentration of the standard reaches a blue color of O.D.600 equal to 1.0.

13.8 Add 100 µL of Stop Solution to each well. Shake plate on a plate shaker for 1 minute to mix. Record the OD at 450 nm. This is an endpoint reading.

13.9 Alternative to 13.7 – 13.8: Instead of the endpoint reading at 450 nm, record the development of TMB Substrate kinetically. Immediately after addition of TMB Development Solution begin recording the blue color development with elapsed time in the microplate reader prepared with the following settings:

Mode	Kinetic
Wavelength:	600 nm
Time:	up to 20 min
Interval:	20 sec - 1 min
Shaking:	Shake between readings

Δ **Note:** that an endpoint reading can also be recorded at the completion of the kinetic read by adding 100 µL Stop Solution to each well and recording the OD at 450 nm.

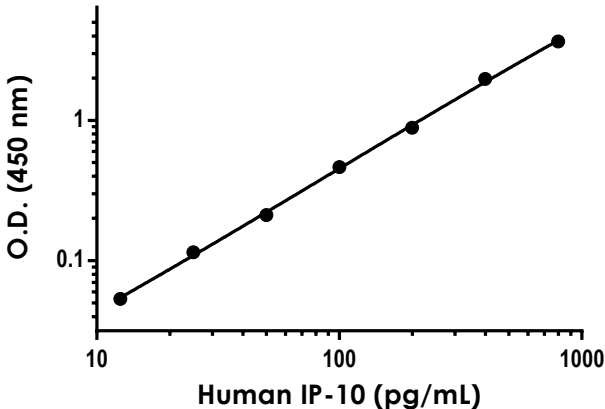
13.10 Analyze the data as described below.

14. Calculations

- 14.1 Calculate the average absorbance value for the blank control (zero) standards. Subtract the average blank control standard absorbance value from all other absorbance values.
- 14.2 **Create a standard curve** by plotting the average blank control subtracted absorbance value for each standard concentration (y-axis) against the target protein concentration (x-axis) of the standard. Use graphing software to draw the best smooth curve through these points to construct the standard curve.
 - Δ **Note:** Most microplate reader software or graphing software will plot these values and fit a curve to the data. A four parameter curve fit (4PL) is often the best choice; however, other algorithms (e.g. linear, semi-log, log/log, 4 parameter logistic) can also be tested to determine if it provides a better curve fit to the standard values.
- 14.3 Determine the concentration of the target protein in the sample by interpolating the blank control subtracted **absorbance values against the standard curve**. Multiply the resulting value by the appropriate sample dilution factor, if used, to obtain the concentration of target protein in the sample.
- 14.4 Samples generating absorbance values greater than that of the highest standard should be further diluted and reanalyzed. Similarly, samples which measure at an absorbance values less than that of the lowest standard should be retested in a less dilute form.

15. Typical Data

Typical standard curve – data provided **for demonstration purposes only**. A new standard curve must be generated for each assay performed.



Standard Curve Measurements			
Conc. (pg/mL)	O.D. 450 nm		Mean O.D.
	1	2	
0	0.057	0.058	0.058
12.5	0.110	0.112	0.111
25	0.174	0.171	0.173
50	0.262	0.277	0.269
100	0.524	0.522	0.523
200	0.939	0.948	0.943
400	2.028	2.048	2.038
800	3.707	3.708	3.708

Figure 1. Example of IP-10 beta standard curve prepared in Sample Diluent NS. The IL-1 beta standard curve was prepared as described in Section 10. Raw data values are shown in the table. Background-subtracted data values (mean +/- SD) are graphed.

16. Typical Sample Values

SENSITIVITY –

The calculated minimal detectable (MDD) dose is 2.6 pg/mL. The MDD was determined by calculating the mean of zero standard replicates (n=8) and adding 2 standard deviations then interpolating the corresponding concentrations.

RECOVERY –

Sample Type	Average % Recovery	Range (%)
50% Cell Culture Media	95 - 98	96
10% Human Serum	102 - 105	103
10% Human Plasma (sodium citrate)	93 - 98	96
10% Human Plasma (EDTA)	99 - 103	101
10% Human Plasma (heparin)	82 - 88	86
50% Cell Culture Media	95 - 98	96

Linearity of Dilution

Dilution Factor	Interpolated value	Sample Diluent NS	Conditioned Media	Human Serum
Undiluted	pg/mL	571.1	559.1	504.5
	% Expected Value	100	100	100
1:2	pg/mL	317.6	311.6	333.9
	% Expected Value	111	111	132
1:4	pg/mL	149.7	153.7	157.1
	% Expected Value	105	110%	125
1:8	pg/mL	72.3	76.0	76.4
	% Expected Value	101	109	121
1:16	pg/mL	35.1	40.9	38.0
	% Expected Value	98	117	120

NL- Non-Linear

Dilution Factor	Interpolated value	Human Plasma (Citrate)	Human Plasma (EDTA)	Human Plasma (Heparin)
Undiluted	pg/mL	555.5	603.7	492.1
	% Expected Value	100	100	100
1:2	pg/mL	325.9	309.2	268.1
	% Expected Value	117	102	109
1:4	pg/mL	154.3	156.9	138.2
	% Expected Value	111	104	112
1:8	pg/mL	75.9	77.5	68.6
	% Expected Value	109	103	111
1:16	pg/mL	37.2	36.0	33.8
	% Expected Value	107	95	110

PRECISION –

Mean coefficient of variations of interpolated values from 3 concentrations of PBMC conditioned media (+/- PHA) within the working range of the assay.

	Intra-assay Precision	Inter-Assay Precision
n =	9	3
CV (%)	5.1	11.1

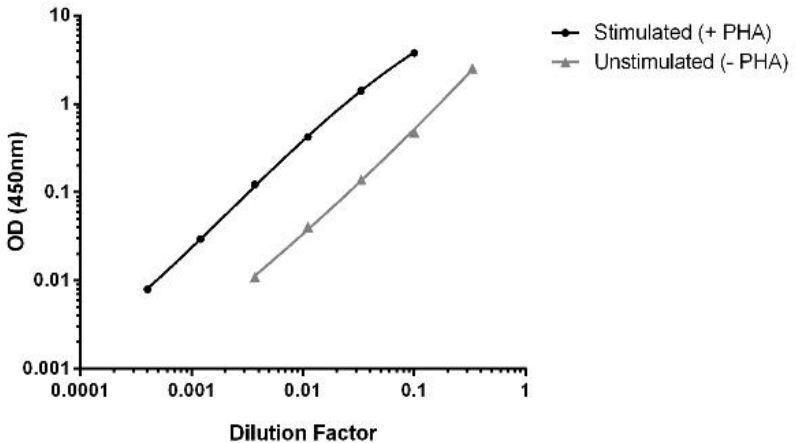


Figure 2. Titration of PBMC conditioned media (+/- PHA) within the working range of the assay. Background subtracted data from triplicate measurements are plotted).

PBMC – Day 2	Range (pg/mL)	Mean (pg/mL)
Unstimulated (-PHA)	1023 - 1102	996
Stimulated (+PHA)	8582 – 10675	9096

Figure 3. Human peripheral blood cells (1×10^6 cells/mL) were cultured in RPMI media supplemented with 10% fetal calf serum, 100 U/mL penicillin, and 100 μ g/mL streptomycin sulfate. Cells were cultured unstimulated or stimulated with 10 μ g/mL PHA. Conditioned media was harvested after 48 hours, aliquoted and assayed for endogenous IP-10 levels.

17. Assay Specificity

Human Serum	Range (pg/mL)	Mean (pg/mL)
Donor 81	40 - 92	65
Donor 82	47 - 99	74
Donor 83	42 - 93	66
Donor 84	214 - 304	261
Donor 85	53 - 104	78
Donor 86	52 - 107	77
Donor 87	60 - 120	88
Donor 88	43 - 109	75
Donor 89	107 - 173	137
Donor 90	69 - 136	99
Average	65 - 261	102

Figure 4. Observed IP-10 concentration in individual donor normal Human serum samples (n=10). Mean values fall within expected normal reference ranges (Gotsch et al, 2007).

18. Species Reactivity

This kit detects IP-10 in human serum and plasma samples.

Urine and saliva samples have not been tested with this kit.

Please contact our Technical Support team for more information.

19. Troubleshooting

Problem	Cause	Solution
Poor standard curve	Inaccurate Pipetting	Check pipettes
	Improper standard dilution	Prior to opening, briefly spin the stock standard tube and dissolve the powder thoroughly by gentle mixing
Low Signal	Incubation times too brief	Ensure sufficient incubation times; increase to 2 or 3 hour standard/sample incubation
	Inadequate reagent volumes or improper dilution	Check pipettes and ensure correct preparation
	Incubation times with TMB too brief	Ensure sufficient incubation time until blue color develops prior addition of Stop solution
Large CV	Plate is insufficiently washed	Review manual for proper wash technique. If using a plate washer, check all ports for obstructions.
	Contaminated wash buffer	Prepare fresh wash buffer
Low sensitivity	Improper storage of the ELISA kit	Store your reconstituted standards at -80°C, all other assay components 4°C. Keep TMB Development Solution protected from light.

20. Notes

Technical Support

Copyright © 2026 Abcam, All Rights Reserved. The Abcam logo is a registered trademark. All information / detail is correct at time of going to print.

For all technical or commercial enquiries please go to:

<https://www.abcam.com/en-us/contact-us>

<https://www.abcam.cn/contact-us> (China)

<https://www.abcam.co.jp/contact-us> (Japan)