

ab178634 – Anti-Bordetella pertussis toxin (PT) IgG ELISA Kit

Instructions for Use

For the quantitative measurement of IgG class antibodies against Bordetella pertussis toxin (PT) in Human serum or plasma.

This product is for research use only and is not intended for diagnostic use.

Table of Contents

INTRODUCTION

1. BACKGROUND	2
2. ASSAY SUMMARY	4

GENERAL INFORMATION

3. PRECAUTIONS	5
4. STORAGE AND STABILITY	5
5. MATERIALS SUPPLIED	6
6. MATERIALS REQUIRED, NOT SUPPLIED	7
7. LIMITATIONS	8
8. TECHNICAL HINTS	9

ASSAY PREPARATION

9. REAGENT PREPARATION	10
10. SAMPLE COLLECTION AND STORAGE	10
11. SAMPLE PREPARATION	10
12. PLATE PREPARATION	11

ASSAY PROCEDURE

13. ASSAY PROCEDURE	12
---------------------	----

DATA ANALYSIS

14. CALCULATIONS	144
15. TYPICAL DATA	166
16. TYPICAL SAMPLE VALUES	177
17. ASSAY ANALYTICAL SPECS	177

RESOURCES

18. INTERFERENCES	188
19. TROUBLESHOOTING	188
20. NOTES	2020

1. BACKGROUND

Abcam's anti-Bordetella pertussis toxin (PT) IgG *in vitro* ELISA (Enzyme-Linked Immunosorbent Assay) kit is designed for the accurate quantitative measurement of IgG class antibodies to Bordetella pertussis toxin (PT) in Human serum and plasma (citrate).

A 96-well plate has been precoated with Bordetella pertussis toxin to bind cognate antibodies. Controls or test samples are added to the wells and incubated. Following washing, a horseradish peroxidase (HRP) labelled anti-Human IgG conjugate is added to the wells, which binds to the immobilized B. pertussis toxin-specific antibodies. TMB is then catalyzed by the HRP to produce a blue color product that changes to yellow after adding an acidic stop solution. The density of yellow coloration is directly proportional to the amount of Bordetella pertussis toxin (PT) IgG sample captured in plate.

Bordetella species are non-spore-forming encapsulated bipolar, coccoid (pale-staining) Gram-negative bacilli (about 0.3-0.5 μm thick and 1 μm long). The genus consists of the human pathogens *B. pertussis* and *B. parapertussis*, and *B. bronchiseptica* which cause enzootic infections in various wild and domestic animal species. *B. pertussis* is the pathogenic agent of pertussis and exists only in ill people; *B. parapertussis* causes 5-20 % of a milder and often clinical unapparent form of pertussis. *B. bronchiseptica* has seldomly (e. g. close contact with animals) human pathogenic significance as opportunistic secondary infectious agent in mixed infections (bronchitis, pneumonia, wound infection).

Pertussis or whooping cough is a bacterial infection of the respiratory system. It is a highly contagious childhood disease which appears seldomly in adults. It is transmitted by airborne droplets. *B. pertussis* has the ability to stick to the cilia of the epidermal cells of the respiratory system. Fragments of the bacterial cell wall (ExoToxin = tracheal Cytotoxin, TCT) inhibit the movement of the cilia in the tracheal mucosa. In developing countries, case fatality is 4% in infants aged less than 1 year old. For children aged 1 -4 years old, fatality is 1 After an incubation time of one to three weeks the disease progresses through three stages (see table below).

PRODUCT INFORMATION

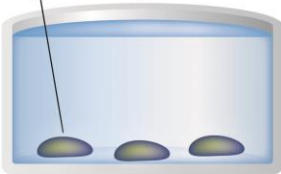
Autoantigen	Disease	Symptoms	Mechanism of Infection
Bordetella pertussis	Pertussis whooping cough	<p>Stadium catarrhale: symptoms of a cold with low-grade fever (1-2 weeks)</p> <p><u>Stadium convulsivum:</u> severe, spasmodic coughing; after deep inspiration follows a coughing staccato with protruded tongue (2-6 weeks)</p> <p><u>Stadium decrementi:</u> Ease of disease with symptoms of a bronchitis (up to 6 weeks).</p>	<p>Highly contagious droplet infection</p> <p>Humans are the only reservoir of B. pertussis</p> <p>Incubation time: 1-3 weeks</p>

Pertussis (after measles virus B) is the main reason for high infant mortality in Africa. The distribution of the disease is worldwide.

Clinical pertussis is followed by natural acquired immunity which is long-lasting but not permanent. In most countries an active vaccination is recommended which leads to 90 % protection for three to twelve years. Usually the immunization preparation is combined with diphtheria and tetanus toxoids.

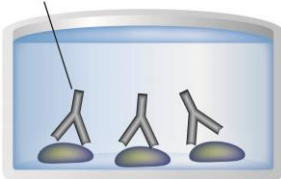
2. ASSAY SUMMARY

Capture Antigens



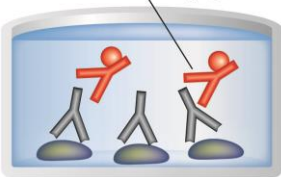
Prepare all reagents, samples and controls as instructed.

Sample



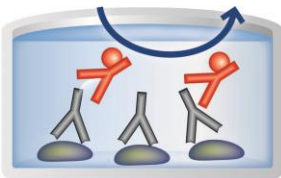
Add samples and controls to wells used. Incubate at 37°C.

Labeled HRP-Conjugate



Wash each well and add prepared labeled HRP-Conjugate. Incubate at room temperature.

Substrate Colored Product



After washing, add TMB substrate solution to each well. Incubate at room temperature. Add Stop Solution to each well. Read immediately.

3. PRECAUTIONS

Please read these instructions carefully prior to beginning the assay.

All kit components have been formulated and quality control tested to function successfully as a kit. Modifications to the kit components or procedures may result in loss of performance.

4. STORAGE AND STABILITY

Store kit at 2-8°C immediately upon receipt.

Refer to list of materials supplied for storage conditions of individual components. Observe the storage conditions for individual prepared components in section 9. Reagent Preparation.

5. MATERIALS SUPPLIED

Item	Amount	Storage Condition (Before Preparation)
Bordetella pertussis toxin (IgG) Coated Microplate (12 x 8 wells)	96 Wells	2-8°C
IgG Sample Diluent***	100 mL	2-8°C
Stop Solution	15 mL	2-8°C
20X Washing Solution*	50 mL	2-8°C
Bordetella pertussis toxin (IgG) Anti-IgG HRP Conjugate**	20 mL	2-8°C
TMB Substrate Solution	15 mL	2-8°C
Bordetella pertussis toxin (IgG) Low control***	2 mL	2-8°C
Bordetella pertussis toxin (IgG) High control***	2 mL	2-8°C
Bordetella pertussis toxin (IgG) Standard A – 0 IU/mL***	2 mL	2-8°C
Bordetella pertussis toxin (IgG) Standard B – 25 IU/mL***	2 mL	2-8°C
Bordetella pertussis toxin (IgG) Standard C – 50 IU/mL***	2 mL	2-8°C
Bordetella pertussis toxin (IgG) Standard D – 100 IU/mL***	2 mL	2-8°C
Bordetella pertussis toxin (IgG) Standard E – 200 IU/mL***	2 mL	2-8°C
Strip Holder	1 unit	2-8°C
Cover Foil	1 unit	2-8°C

* Contains 0.1 % Bronidox L after dilution

** Contains 0.2 % Bronidox L

*** Contains 0.1 % Kathon

6. MATERIALS REQUIRED, NOT SUPPLIED

These materials are not included in the kit, but will be required to successfully utilize this assay:

- Microplate reader capable of measuring absorbance at 450 nm or 620 nm
- Incubator at 37°C
- Multi and single channel pipettes to deliver volumes between 10 and 1,000 μL
- Optional: Automatic plate washer for rinsing wells
- Vortex tube mixer
- Deionised or (freshly) distilled water
- Disposable tubes
- Timer

7. LIMITATIONS

- ELISA kit intended for research use only. Not for use in diagnostic procedures
- All components of Human origin used for the production of these reagents have been tested for anti-HIV antibodies, anti-HCV antibodies and HBsAg and have been found to be non-reactive. Nevertheless, all materials should still be regarded and handled as potentially infectious
- Use only clean pipette tips, dispensers, and lab ware.
- Do not interchange screw caps of reagent vials to avoid cross-contamination
- Close reagent vials tightly immediately after use to avoid evaporation and microbial contamination
- After first opening and subsequent storage check conjugate and control vials for microbial contamination prior to further use
- To avoid cross-contamination and falsely elevated results pipette patient samples and dispense conjugate without splashing accurately to the bottom of wells

8. TECHNICAL HINTS

- Avoid foaming or bubbles when mixing or reconstituting components
- Avoid cross contamination of samples or reagents by changing tips between sample, standard and reagent additions.
- Ensure plates are properly sealed or covered during incubation steps
- Complete removal of all solutions and buffers during wash steps is necessary for accurate measurement readings
- **This kit is sold based on number of tests. A ‘test’ simply refers to a single assay well. The number of wells that contain sample, control or standard will vary by product. Review the protocol completely to confirm this kit meets your requirements. Please contact our Technical Support staff with any questions**

9. REAGENT PREPARATION

Equilibrate all reagents, samples and controls to room temperature (18-25°C) prior to use.

9.1 **1X Washing Solution**

Prepare 1X Washing Solution by diluting 20X Washing Solution with deionized water. To make 200 mL 1X Washing Solution combine 10 mL 20X Washing Solution with 190 mL deionized water. Mix thoroughly and gently.

- All other solutions are supplied ready to use

10. SAMPLE COLLECTION AND STORAGE

- Use Human serum or plasma (citrate) samples with this assay. If the assay is performed within 5 days of sample collection, the specimen should be kept at 2-8°C; otherwise they should be aliquoted and stored deep-frozen (-20 to -80°C). If samples are stored frozen, mix thawed samples well before testing.

Avoid repeated freezing and thawing.

Heat inactivation of samples is not recommended

11. SAMPLE PREPARATION

- Before assaying, all samples should be diluted 1:100 with IgG Sample Diluent. Add 10 µL sample to 990 µL IgG Sample Diluent to obtain a 1:100 dilution. Mix gently and thoroughly.

12. PLATE PREPARATION

- The 96 well plate strips included with this kit are supplied ready to use. It is not necessary to rinse the plate prior to adding reagents
- Unused well strips should be returned to the plate packet and stored at 4°C
- For each assay performed, a minimum of 1 well must be used as a blank, omitting sample and conjugate from well addition
- For statistical reasons, we recommend each standard and sample should be assayed with a minimum of two replicates (duplicates)

13. ASSAY PROCEDURE

- **Equilibrate all materials and prepared reagents to room temperature prior to use.**
- **Please read the test protocol carefully before performing the assay. Reliability of results depends on strict adherence to the test protocol as described.**
- **If performing the test on ELISA automatic systems we recommend increasing the washing steps from three to five and the volume of washing solution from 300 μ L to 350 μ L to avoid washing effects.**
- **Assay all standards, controls and samples in duplicate.**
- **All controls (Bordetella pertussis toxin Low Control and Bordetella pertussis toxin High Control must be included with each assay performed to determine test results**

- 13.1. Prepare all reagents, working standards, and samples as directed in the previous sections.
- 13.2. Remove excess microplate strips from the plate frame, return them to the foil pouch containing the desiccant pack, reseal and return to 4°C storage.
- 13.3. Add 100 μ L of each standard or sample into appropriate wells. Leave one well for substrate blank.
- 13.4. Cover wells with the foil supplied in the kit and incubate for one hour at 37°C.
- 13.5. Remove the foil, aspirate the contents of the wells and wash each well three times with 300 μ L of 1X Washing Solution. Avoid spill over into neighboring wells. The soak time between each wash cycle should be >5 sec. After the last wash, remove the remaining 1X Washing Solution by aspiration or decanting. Invert the plate and blot it against clean paper towels to remove excess liquid.

Note: Complete removal of liquid at each step is essential for good assay performance.

- 13.6. Add 100 μ L Bordetella pertussis toxin Anti-IgG HRP Conjugate into all wells except for the blank well. Cover with foil.
- 13.7. Incubate for 30 minutes at room temperature. Do not expose to direct sunlight.
- 13.8. Repeat step 13.5.
- 13.9. Add 100 μ L TMB Substrate Solution into all wells
- 13.10. Incubate for exactly 15 minutes at room temperature in the dark.
- 13.11. Add 100 μ L Stop Solution into all wells in the same order and at the same rate as for the TMB Substrate Solution.
Note: Any blue color developed during the incubation turns into yellow.
- 13.12. Highly positive samples can cause dark precipitates of the chromogen. These precipitates have an influence when reading the optical density. Predilution of the sample with physiological sodium chloride solution, for example 1:1 is recommended. Then dilute the sample 1:100 with IgG Sample Diluent and multiply the results in Standard Units by 2 (See Section 14. Calculations.)
- 13.13. Measure the absorbance of the specimen at 450 nm within 30 minutes of addition of the Stop Solution.
Dual wavelength reading using 620 nm as reference wavelength is recommended.

14. CALCULATIONS

In order for an assay to be considered valid, the following criteria must be met:

- **Substrate blank:** Absorbance value < **0.100**
- **Standard A:** Absorbance value < **0.200**
- **Standard B:** Absorbance value > **Standard A**
- **Standard C:** Absorbance value > **Standard B**
- **Standard D:** Absorbance value > **Standard C**
- **Standard E:** Absorbance value > **1.000**
- **Low Control:** Result in IU/mL within range indicated on the label
- **High Control:** Result in IU/mL within range indicated on the label

Standard A < Standard B < Standard C < Standard D < Standard E

If these criteria are not met, the test is not valid and must be repeated.

Calculation of Results

Calculate the mean background subtracted absorbance for each point of the standard curve and each sample. Plot the mean value of absorbance of the standards against concentration. Draw the best-fit curve through the plotted points. (e. g.: Four Parameter Logistic).

Interpolate the values of the samples on the standard curve to obtain the corresponding values of the concentrations expressed in IU/mL.

Interpretation of Results

Normal value ranges for this ELISA should be established by each researcher.

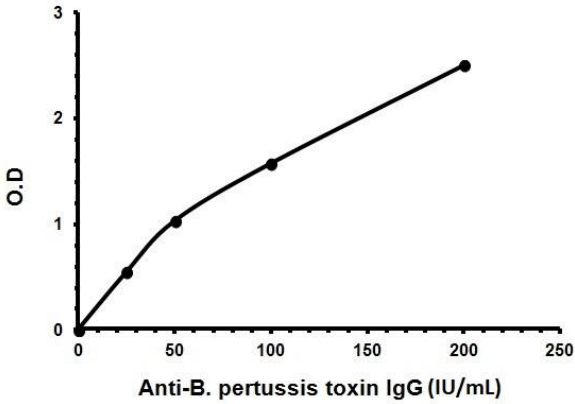
The following values should be considered as a guideline only:

IgG		IgA	
< 40 IU/mL	Non-infected – not indicative of recent contact	-	
≥ 40 - < 100 IU/mL	Inconclusive (grey zone) – testing of a further sample after 7 – 10 days or further analysis of the IgA antibody response is recommended	< 12 IU/mL	Non-infected – not indicative of recent contact
		≥ 12 IU/mL	Recent infection – indicative of recent contact
≥ 100 IU/mL	Recent infection – indicative of recent contact	-	

Diagnosis of an infectious disease should not be established on the basis of a single test result. A precise diagnosis should take into consideration clinical history, symptomatology as well as serological data. In immunocompromised patients and newborns serological data will only have restricted value.

15. TYPICAL DATA

TYPICAL STANDARD CURVE – Data provided for demonstration purposes only. A new standard curve must be generated for each assay performed.



16. TYPICAL SAMPLE VALUES

PRECISION –

	Intra-Assay		Inter-Assay	
	Serum 3	Serum 4	Serum 1	Serum 2
n=	24	23	12	12
Mean (OD)	2.030	0.659		
Mean (IU/mL)			129.0	12.8
%CV	2.2	3.7	6.9	9.9

17. ASSAY ANALYTICAL SPECS

SPECIFICITY -

The specificity is > 98 % and is defined as the probability of the assay scoring negative in the absence of the specific analyte.

SENSITIVITY -

The sensitivity is > 98 % and is defined as the probability of the assay scoring positive in the presence of the specific analyte.

The concentration of the analyte that can be distinguished from the zero calibrator is < 5 IU/mL.

18. INTERFERENCES

Interferences with hemolytic, lipemic or icteric sera are not observed up to a concentration of 10 mg/mL hemoglobin, 5 mg/mL triglycerides and 0.5 mg/mL bilirubin.

19. TROUBLESHOOTING

Problem	Cause	Solution
Low signal	Incubation time too short	Try overnight incubation at 4 °C
	Precipitate can form in wells upon substrate addition when concentration of target is too high	Increase dilution factor of sample
	Using incompatible sample type (e.g. serum vs. cell extract)	Detection may be reduced or absent in untested sample types
	Sample prepared incorrectly	Ensure proper sample preparation/dilution
Large CV	Bubbles in wells	Ensure no bubbles present prior to reading plate
	All wells not washed equally/thoroughly	Check that all ports of plate washer are unobstructed/wash wells as recommended
	Incomplete reagent mixing	Ensure all reagents/master mixes are mixed thoroughly
	Inconsistent pipetting	Use calibrated pipettes & ensure accurate pipetting
	Inconsistent sample preparation or storage	Ensure consistent sample preparation and optimal sample storage conditions (e.g. minimize freeze/thaws cycles)

RESOURCES

Problem	Cause	Solution
High background	Wells are insufficiently washed	Wash wells as per protocol recommendations
	Contaminated wash buffer	Make fresh wash buffer
	Waiting too long to read plate after adding stop solution	Read plate immediately after adding stop solution
Low sensitivity	Improper storage of ELISA kit	Store all reagents as recommended. Please note all reagents may not have identical storage requirements.
	Using incompatible sample type (e.g. Serum vs. cell extract)	Detection may be reduced or absent in untested sample types

20. NOTES

Technical Support

Copyright © 2026 Abcam. All Rights Reserved. The Abcam logo is a registered trademark. All information / detail is correct at time of going to print.

For all technical or commercial enquiries please go to:

<https://www.abcam.com/en-us/contact-us>

<https://www.abcam.cn/contact-us> (China)

<https://www.abcam.co.jp/contact-us> (Japan)