

# **ab190520 – CRP Cat ELISA Kit**

Instructions for Use

For the quantitative measurement of CRP in Cat serum and plasma samples.

This product is for research use only and is not intended for diagnostic use.

# Table of Contents

---

## INTRODUCTION

- 1. BACKGROUND 2
- 2. ASSAY SUMMARY 4

## GENERAL INFORMATION

- 3. PRECAUTIONS 5
- 4. STORAGE AND STABILITY 5
- 5. MATERIALS SUPPLIED 5
- 6. MATERIALS REQUIRED, NOT SUPPLIED 6
- 7. LIMITATIONS 6
- 8. TECHNICAL HINTS 7

## ASSAY PREPARATION

- 9. REAGENT PREPARATION 8
- 10. STANDARD PREPARATIONS 8
- 11. SAMPLE COLLECTION AND STORAGE 12
- 12. SAMPLE PREPARATION 13
- 13. PLATE PREPARATION 14

## ASSAY PROCEDURE

- 14. ASSAY PROCEDURE 15

## DATA ANALYSIS

- 15. CALCULATIONS 16
- 16. TYPICAL DATA 17
- 17. TYPICAL SAMPLE VALUES 18

## RESOURCES

- 18. INTERFERENCES 19
- 19. TROUBLESHOOTING 19
- 20. NOTES 20

## 1. BACKGROUND

Abcam's CRP Cat ELISA Kit is a highly sensitive two-site enzyme linked immunoassay (ELISA) for measuring CRP in biological samples of Cats.

In this assay the CRP present in samples reacts with the anti-CRP antibodies, which have been adsorbed to the surface of polystyrene microtitre wells. After the removal of unbound proteins by washing, anti-CRP antibodies conjugated with horseradish peroxidase (HRP), are added. These enzyme-labeled antibodies form complexes with the previously bound CRP. Following another washing step, the enzyme bound to the immunosorbent is assayed by the addition of a chromogenic substrate, 3,3',5,5'-tetramethylbenzidine (TMB). The quantity of bound enzyme varies directly with the concentration of CRP in the sample tested; thus, the absorbance, at 450 nm, is a measure of the concentration of CRP in the test sample. The quantity of CRP in the test sample can be interpolated from the standard curve constructed from the standards, and corrected for sample dilution.

Acute phase proteins are plasma proteins, which increase in concentration following infection, inflammation or trauma. C-reactive protein (CRP) is so named because it is able to effect precipitation of somatic C-polysaccharide of *Streptococcus pneumoniae*. CRP is an alpha globulin with a mass of 110,000 to 140,000 daltons, and composed of five identical subunits, which are non-covalently assembled as a cyclic pentamer. It is synthesized in the liver and, in Cats, is normally present as a trace constituent of serum at levels less than 0.3 mg/dL. The levels in serum rise quickly following acute tissue damage and also falls very rapidly once the stimulus is removed. It has been proposed that the function of CRP is to aid in complement activation, influence phagocytic cell function, and augment cell mediated cytotoxicity. Investigations over the past few years have shown that quantification of these in plasma or serum can provide

valuable diagnostic information in the detection, prognosis, and monitoring of disease not only in Cats, but in companion animals and farm herds as well.

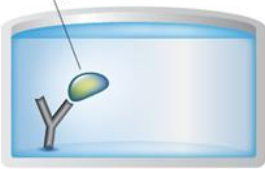
## 2. ASSAY SUMMARY

### Primary capture antibody



Remove appropriate number of antibody coated well strips. Equilibrate all reagents to room temperature. Prepare all the reagents, samples, and standards as instructed.

### Sample



Add standard or sample to each well used. Incubate at room temperature.

### HRP conjugated antibody



Aspirate and wash each well. Add prepared HRP labeled secondary detector antibody. Incubate at room temperature

### Substrate Colored product



## INTRODUCTION

Aspirate and wash each well. Add Chromogen Substrate Solution to each well. Immediately begin recording the color development

## 3. PRECAUTIONS

**Please read these instructions carefully prior to beginning the assay.**

All kit components have been formulated and quality control tested to function successfully as a kit. Modifications to the kit components or procedures may result in loss of performance.

## 4. STORAGE AND STABILITY

**Store kit at +2-8°C or -20°C immediately upon receipt.**

Refer to list of materials supplied for storage conditions of individual components. Observe the storage conditions for individual prepared components in the Reagent Preparation section.

## 5. MATERIALS SUPPLIED

Item	Amount	Storage Condition (Before Preparation)
CRP Cat Calibrator (lyophilized)	1 Vial	+4-8°C
CRP Cat HRP Conjugate	1 vial	+2-8°C
5X Diluent Concentrate	50 mL	+2-8°C
CRP Cat Antibody pre-coated 96 well microplate (12 x 8 well strips)	96 wells	+2-8°C
20X Wash Buffer	50 mL	+2-8°C
TMB Substrate	12 mL	+2-8°C
Stop Solution	12 mL	+2-8°C

### **6. MATERIALS REQUIRED, NOT SUPPLIED**

These materials are not included in the kit, but will be required to successfully utilize this assay:

- Precision pipette (2  $\mu$ L to 200  $\mu$ L) for making and dispensing dilutions
- Test tubes
- Microtitre washer/aspirator
- Distilled or Deionized H<sub>2</sub>O
- Microtitre Plate reader
- Assorted glassware for the preparation of reagents and buffer solutions
- Timer

### **7. LIMITATIONS**

- Reliable and reproducible results will be obtained when the assay procedure is carried out with a complete understanding of the information contained in the package insert instructions and with adherence to good laboratory practice
- Factors that might affect the performance of the assay include proper instrument function, cleanliness of glassware, quality of distilled or deionized water, and accuracy of reagent and sample pipettings, washing technique, incubation time or temperature
- Do not mix or substitute reagents with those from other lots or sources

### 8. TECHNICAL HINTS

- Samples generating values higher than the highest standard should be further diluted in the appropriate sample dilution buffers
- Avoid foaming or bubbles when mixing or reconstituting components
- Avoid cross contamination of samples or reagents by changing tips between sample, standard and reagent additions
- Ensure plates are properly sealed or covered during incubation steps
- Complete removal of all solutions and buffers during wash steps

## 9. REAGENT PREPARATION

Equilibrate all reagents and samples to room temperature (18-25°C) prior to use.

### 9.1 5X Diluent Concentrate

The Diluent Solution supplied is a 5X Concentrate and must be diluted 1/5 with distilled or deionized water (1 part buffer concentrate, 4 parts dH<sub>2</sub>O).

Store at 2-8°C.

### 9.2 Wash Buffer

The wash solution is supplied as 20X Concentrate and must be diluted 1/20 with distilled or deionized water (1 part buffer concentrate, 19 parts dH<sub>2</sub>O). Crystal formation in the concentrate is not uncommon when storage temperatures are low. Warming of the concentrate to 30-35°C before dilution can dissolve crystals. The 1X Wash Buffer is stable for at least one week from the date of preparation and can be stored at room temperature (16-25°C) or at 2-8°C.

### 9.3 CRP Cat HRP Conjugate

Calculate the required amount of 1X CRP Cat HRP Conjugate solution for each microtitre plate test strip by adding 10 µL CRP Cat HRP Conjugate to 990 µL of 1X Diluent for each test strip to be used for testing. Dilute immediately before use. Mix gently but thoroughly. Avoid foaming. The working conjugate solution is stable for up to 1 hour when stored in the dark.

### 9.4 CRP Cat Antibody coated microwells

Ready to use as supplied. Unseal Microtiter Pouch and remove plate from pouch. Remove all strips and wells that will not be used in the assay and place back in pouch and re-seal. Store at 2-8°C.

## 9.5 CRP Cat Calibrator (lyophilized)

Reconstitute the CRP Cat Calibrator with distilled or de-ionized water as specified on the vial and mix gently until dissolved. The amount of calibrator is shown on the vial, and after reconstitution will have a concentration of X  $\mu\text{g/mL}$ , where X is the amount on the vial (the reconstituted calibrator should be aliquoted and stored frozen if future use is intended).

## 10. STANDARD PREPARATIONS

Prepare serially diluted standards immediately prior to use. Always prepare a fresh set of standards for every use.

10.1 The liquid Cat CRP Calibrator should be aliquoted and stored at  $-20^{\circ}\text{C}$ . Avoid multiple freeze-thaw cycles. **The calibrator is provided at the concentration stated on the vial.**

10.2 Label nine tubes A and # 1-8.

10.3 Prepare Standard #1 by adding the appropriate volume of 1X Diluent Solution and CRP Cat Calibrator (derived below) to tube #1. Mix thoroughly but gently.

**As an example:** If the CRP Cat Calibrator is supplied at a concentration of  $85.07 \mu\text{g/mL}$ , then to generate a  $850.7 \text{ ng/mL}$  **Standard A**, add  $80 \mu\text{L}$  of the Calibrator to  $720 \mu\text{L}$  of 1X Diluent Solution.

10.4 Prepare **Standard #1** at  $200\text{ng/ml}$  by adding the appropriate volume of 1X Diluent Solution and **Standard A** to tube # 1.

\*Example:

**NOTE: THIS EXAMPLE IS FOR DEMONSTRATION PURPOSES ONLY. PLEASE REMEMBER TO CHECK YOUR CALIBRATOR VIAL FOR THE ACTUAL CONCENTRATION OF CALIBRATOR PROVIDED.**

## ASSAY PREPARATION

$C_S$  = Starting concentration of **Standard #A** (variable e.g. 850.7 ng/mL)

$C_F$  = Final concentration of **Standard #1** (200 ng /mL)

$V_A$  = Total volume of **Standard #A** to dilute (e.g. 150  $\mu$ L)

$V_D$  = Total volume of 1X Diluent Solution required to dilute **Standard A** to prepare **Standard #1**

$V_T$  = Total volume of **Standard #1**

$D_F$  = Dilution factor

Calculate the dilution factor ( $D_F$ ) between **Standard A** and **Standard #1** final concentration:

$$C_S/C_F = D_F$$
$$850.7 / 200 = 4.25$$

Calculate the final volume  $V_D$  required to prepare **Standard #1** at 200 ng/mL

$$V_A * D_F = V_T$$
$$150 * 4.25 = 638 \mu\text{L}$$

$$V_D = V_T - V_A$$
$$V_D = 638 - 150 = 488 \mu\text{L}$$

Prepare **Standard #1** in tube # 1 by adding 150  $\mu$ L of **Standard A** to 488  $\mu$ L of 1X Diluent Solution to obtain a concentration of 200 ng/mL. Mix thoroughly and gently.

## ASSAY PREPARATION

- 10.5 Add 300  $\mu\text{L}$  1X Diluent Solution into tubes # 2-7.
- 10.6 Prepare **Standard #2** by adding 300  $\mu\text{L}$  from **Standard #1** to tube #2. Mix thoroughly and gently.
- 10.7 Prepare **Standard #3** by adding 300  $\mu\text{L}$  from **Standard #2** to tube #3. Mix thoroughly and gently
- 10.8 Using the table below as a guide to prepare further serial dilutions.
- 10.9 **Standard #8** is a Blank control (0 ng/mL) add 600  $\mu\text{L}$  1X Diluent Solution into tube # 8.

**Standard Dilution Preparation Table**

Standard #	Volume to Dilute ( $\mu\text{L}$ )	Diluent ( $\mu\text{L}$ )	Total Volume ( $\mu\text{L}$ )	Starting Conc. (ng/mL)	Final Conc. (ng/mL)
<b>A</b>	See step 10.3				
<b>1</b>	See step 10.4				
<b>2</b>	300 Std. #1	300	600	200	100
<b>3</b>	300 Std. #2	300	600	100	50
<b>4</b>	300 Std. #3	300	600	50	25
<b>5</b>	300 Std. #4	300	600	25	12.5
<b>6</b>	300 Std. #5	300	600	12.5	6.25
<b>7</b>	300 Std. #6	300	600	6.25	3.125
<b>8 (Blank)</b>	N/A	600	600	0	0



## 11. SAMPLE COLLECTION AND STORAGE

- 11.1 **Serum** – Blood should be collected by venipuncture. The serum should be separated from the cells after clot formation by centrifugation.
- 11.2 **Plasma** – For plasma samples, blood should be collected into a container with an anticoagulant and then centrifuged. Care should be taken to minimize hemolysis, excessive hemolysis can impact your results.

Assay immediately or aliquot and store samples at -20°C. Avoid repeated freeze-thaw cycles.

- **Precautions**

For any sample that might contain pathogens, care must be taken to prevent contact with open wounds.

- **Additives and Preservatives**

No additives or preservatives are necessary to maintain the integrity of the specimen. Avoid azide contamination.

## **12. SAMPLE PREPARATION**

### **General Sample information:**

The assay for quantification of CRP in samples requires that each test sample be diluted before use. For a single step determination a dilution of 1/8,000 is appropriate for most serum/plasma samples. For absolute quantification, samples that yield results outside the range of the standard curve, a lesser or greater dilution might be required. If unsure of sample level, a serial dilution with one or two representative samples before running the entire plate is highly recommended.

To prepare a 1/8,000 dilution of sample, transfer 5 $\mu$ L of sample to 495  $\mu$ L of 1X CRP Cat Diluent. This gives you a 1/100 dilution. Next, dilute the 1/100 sample by transferring 5  $\mu$ L, to 395  $\mu$ L of 1X CRP Cat Diluent. You now have a 1/8,000 dilution of your sample. Mix thoroughly at each stage.

## **13. PLATE PREPARATION**

- The 96 well plate strips included with this kit are supplied ready to use. It is not necessary to rinse the plate prior to adding reagents
- Unused well plate strips should be returned to the plate packet and stored at 4°C
- For each assay performed, a minimum of 2 wells must be used as blanks, omitting primary antibody from well additions
- For statistical reasons, we recommend each sample should be assayed with a minimum of two replicates (duplicates)
- Well effects have not been observed with this assay. Contents of each well can be recorded on the template sheet included in the Resources section

## **14. ASSAY PROCEDURE**

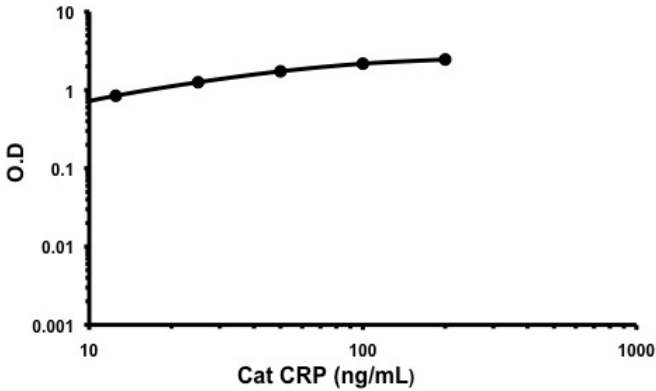
- **Equilibrate all materials and prepared reagents to room temperature prior to use.**
- **It is recommended to assay all standards, controls and samples in duplicate.**
  - 14.1 Pipette 100  $\mu$ L of each standard, including zero control, in duplicate, into pre designated wells.
  - 14.2 Pipette 100  $\mu$ L of sample (in duplicate) into pre designated wells.
  - 14.3 Incubate the microtiter plate at room temperature for thirty ( $30 \pm 2$ ) minutes. Keep plate covered and level during incubation.
  - 14.4 Following incubation, aspirate the contents of the wells.
  - 14.5 Completely fill each well with appropriately diluted 1X Wash Buffer and aspirate. Repeat three times, for a total of four washes. If washing manually: completely fill wells with wash buffer, invert the plate then pour/shake out the contents in a waste container. Follow this by gently striking the wells on absorbent paper to remove residual buffer. Repeat 3 times for a total of four washes.
  - 14.6 Pipette 100  $\mu$ L of appropriately diluted 1X CRP Cat HRP Conjugate to each well. Incubate at room temperature for thirty ( $30 \pm 2$ ) minutes. Keep plate covered in the dark and level during incubation.
  - 14.7 Wash and blot the wells as described in 14.4 - 14.5.
  - 14.8 Pipette 100  $\mu$ L of TMB Substrate Solution into each well.
  - 14.9 Incubate in the dark at room temperature for precisely ten (10) minutes.
  - 14.10 After ten minutes, add 100  $\mu$ L of Stop Solution to each well.
  - 14.11 Determine the absorbance (450 nm) of the contents of each well. Calibrate the plate reader to manufacturer's specifications.

## 15. CALCULATIONS

Average the duplicate standard reading for each standard, sample and control blank. Subtract the control blank from all mean readings. Plot the mean standard readings against their concentrations and draw the best smooth curve through these points to construct a standard curve. Most plate reader software or graphing software can plot these values and curve fit. A four parameter logistic (4PL) usually provides the best fit, though other equations can be examined to see which provides the most accurate (e.g. linear, semi-log, log/log, polynomial (quadratic)). Interpolate protein concentrations for unknown and control samples from the standard curve plotted. Samples producing signals greater than that of the highest standard should be further diluted in Diluent Concentrate and reanalyzed, then multiplying the concentration found by the appropriate dilution factor.

## 16. TYPICAL DATA

**TYPICAL STANDARD CURVE** – Data provided for **demonstration purposes only**. A new standard curve must be generated for each assay performed.



Standard Curve Measurements	
Concentration (ng/mL)	Mean O.D.
3.125	0.315
6.25	0.509
12.5	0.845
25	1.257
50	1.732
100	2.17
200	2.453

## 17. TYPICAL SAMPLE VALUES

### **SENSITIVITY –**

Calculated minimum detectable dose = 3.125 ng/mL

### **RECOVERY –**

Control Serum Recovery = > 85%

### **PRECISION –**

	<b>Intra-Assay</b>	<b>Inter-Assay</b>
%CV	<10	<10

## 18. INTERFERENCES

These chemicals or biologicals will cause interferences in this assay causing compromised results or complete failure.

Azide and thimerosal at concentrations higher than 0.1% inhibits the enzyme reaction.

## 19. TROUBLESHOOTING

Problem	Cause	Solution
Poor standard curve	Inaccurate pipetting	Check pipettes
	Improper standards dilution	Prior to opening, briefly spin the stock standard tube and dissolve the powder thoroughly by gentle mixing
Low Signal	Incubation times too brief	Ensure sufficient incubation times; change to overnight standard/sample incubation
	Inadequate reagent volumes or improper dilution	Check pipettes and ensure correct preparation
Large CV	Plate is insufficiently washed	Review manual for proper wash technique. If using a plate washer, check all ports for obstructions
	Contaminated wash buffer	Prepare fresh wash buffer
Low sensitivity	Improper storage of the ELISA kit	Store the reconstituted protein at -80°C, all other assay components 4°C. Keep substrate solution protected from light.

20. NOTES







## Technical Support

Copyright © 2021 Abcam. All Rights Reserved. The Abcam logo is a registered trademark. All information / detail is correct at time of going to print. For all technical or commercial enquiries please go to:

[www.abcam.com/contactus](http://www.abcam.com/contactus)

[www.abcam.cn/contactus](http://www.abcam.cn/contactus) (China)

[www.abcam.co.jp/contactus](http://www.abcam.co.jp/contactus) (Japan)