

ab197427 – Human Cytokine Antibody Array (160 Targets) - Quantitative

Instructions for Use

For the Quantitative measurement of 160 Human Cytokines in serum, plasma, cell culture media, other body fluids, cell and tissue lysates

This product is for research use only and is not intended for diagnostic use.

Table of Contents

INTRODUCTION

1. BACKGROUND	2
2. ASSAY SUMMARY	4

GENERAL INFORMATION

3. PRECAUTIONS	5
4. STORAGE AND STABILITY	5
5. MATERIALS SUPPLIED	6
6. MATERIALS REQUIRED, NOT SUPPLIED	7
7. LIMITATIONS	8
8. TECHNICAL HINTS	8

ASSAY PREPARATION

9. REAGENT PREPARATION	11
10. STANDARD PREPARATION	12
11. SAMPLE PREPARATION	13
12. ARRAY MAP	14

ASSAY PROCEDURE

13. ASSAY PROCEDURE	21
----------------------------	-----------

DATA ANALYSIS

14. CALCULATIONS	24
15. TYPICAL DATA	25

RESOURCES

16. TROUBLESHOOTING	28
17. NOTES	30

1. BACKGROUND

Abcam's Human Cytokine Antibody Array (160 Targets) - Quantitative ab197427 can be used for quantitative measurement of 160 Human Cytokines. Suitable for serum, plasma, cell culture media, other body fluids, cell and tissue lysates.

Targets: 4-1BB (TNFRSF9/CD137), 6Ckine (CCL21), ALCAM (CD166), Amphiregulin, Axl, CD80 (B7-1), BCMA (TNFRSF17), BDNF, Betacellulin (BTC), beta-NGF, bFGF, BLC (CXCL13), BMP-4, BMP-5, BMP-7, CCL28 (MEC), CD14, CD30 (TNFRSF8), CD40 Ligand (TNFSF5), CEACAM-1, CTACK (CCL27), CXCL16, DR6 (TNFRSF21), Dtk, EGF, EGFR, EG-VEGF (PK1), ENA-78 (CXCL5), Endoglin (CD105), Eotaxin-1 (CCL11), Eotaxin-2 (MPIF-2/CCL24), Eotaxin-3 (CCL26), ErbB3, E-Selectin, Fas (TNFRSF6/Apo-1), FGF-4, FGF-7 (KGF), Flt-3 Ligand, GCP-2, (CXCL6), GCSF, GDF-15, GDNF, GITR (TNFRSF18), GM-CSF, GRO alpha/beta/gamma, Growth Hormone, HB-EGF, HCC-1 (CCL14), HCC-4 (CCL16), HGF, HVEM (TNFRSF14), I-309 (TCA-3/CCL1), ICAM-1 (CD54), ICAM-3 (CD50), IFN-gamma, IGF-1, IGFBP-1, IGFBP-2, IGFBP-3, IGFBP-4, IGFBP-6, IL-1 alpha (IL-1 F1), IL-1 beta (IL-1 F2), IL-1 R4 (ST2), IL-1 ra (IL-1 F3), IL-1 R1, IL-10, IL-10 R beta, IL-11, IL-12 p40, IL-12 p70, IL-13, IL-15, IL-16, IL-17A, IL-17F, IL-17 RA, IL-18 BP alpha, IL-2, IL-21 R, IL-28A (IFN-lambda 2), IL-29 (IFN-lambda 1), IL-2 R gamma (Common gamma Chain), IL-31, IL-4, IL-5, IL-6, IL-6 R, IL-7, IL-8 (CXCL8), IL-9, Insulin, IP-10 (CXCL10), I-TAC (CXCL11), LIF, LIGHT (TNFSF14), LIMP2, Lipocalin-2 (NGAL), L-Selectin (CD62L), Lymphotactin (XCL1), YVE-1, MCP-1 (CCL2), MCP-2 (CCL8), MCP-3 (MARC/CCL7), MCP-4 (CCL13), M-CSF, M-CSF R, MDC (CCL22), MICA, MICB, MIF, MIG (CXCL9), MIP-1 alpha (CCL3), MIP-1 beta (CCL4), MIP-1 delta (CCL15), MIP-3 alpha (CCL20), MIP-3 beta (CCL19), MPIF-1, (CCL23), MSP alpha/beta, NAP-2 (PPBP/CXCL7), NGFR (TNFRSF16), NRG1-beta 1 (HRG1-beta 1), NT-3, NT-4, Osteopontin (SPP1), Osteoprotegerin (TNFRSF11B), PARC (CCL18), PDGF R beta, PDGF-AA, PDGF-BB, PECAM-1 (CD31), Platelet Factor 4 (CXCL4), PLGF, RAGE, RANTES (CCL5), SCF, SCF R (CD117/c-kit), SDF-1 alpha (CXCL12 alpha), TARC (CCL17), TECK (CCL25), TGF alpha, TGF

INTRODUCTION

beta 1, TGF beta 3, TIM-1 (KIM-1), TIMP-1, TIMP-2, TNF alpha, TNF beta (TNFSF1B), TNF RI (TNFRSF1A), TNF RII (TNFRSF1B), TRAIL R3 (TNFRSF10C), Trappin-2, TSLP, uPAR, VCAM-1, (CD106), VEGF-A, VEGF-D, VEGFR2, VEGFR3, XEDAR.

The analytes measured by this kit are split across 4 different arrays on different slides, all of which are provided in the kit.

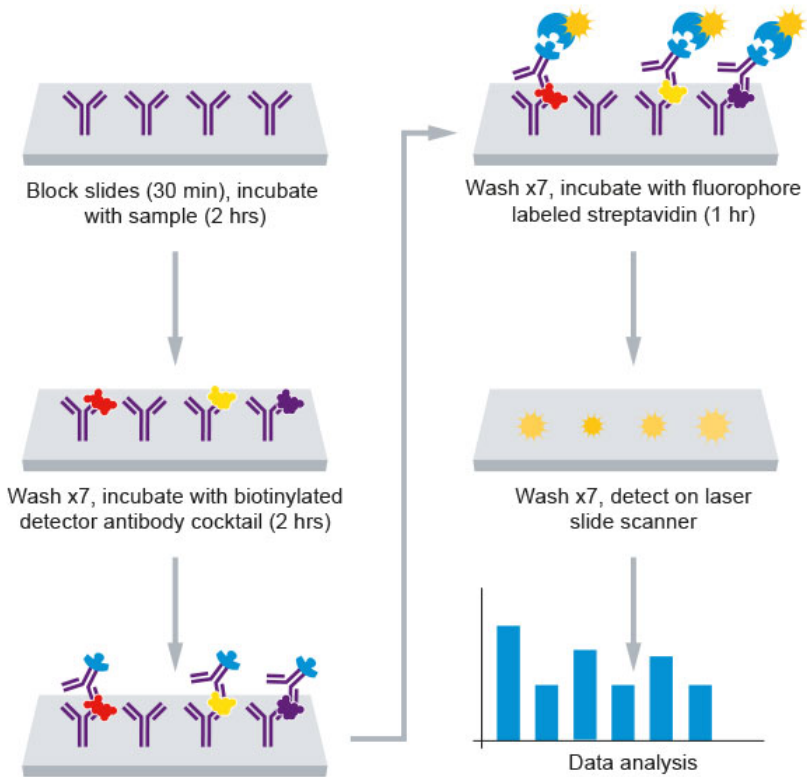
Quantitative antibody arrays can be used to quantitate up to 40 cytokines with as little as 50 μ L of sample. Arrays are available for 400 human and 200 mouse proteins.

Each glass slide is spotted with 16 identical antibody arrays and is provided with a 16 well gasket to allow separate samples to be applied to each array. Each antibody is spotted in quadruplicate on each array. For reproducible quantitation, eight of the arrays are used with a cocktail of protein standards to produce a standard curve. The same 8 standard curve arrays can be used across multiple slides, allowing measurement of 22 experimental samples with 2 slides, 36 with 3 slides etc.

For high through-put, 4 slides can be nested into a tray matching a standard microplate (not supplied), allowing automated processing with a liquid handling workstation.

Array processing can be completed within one working day and arrays can be analyzed with a wide number of laser glass slide array / gene microarray scanners (see scanner requirements at www.abcam.com/QuantAntibodyArrays). If you don't have a suitable scanner then we recommend our membrane antibody arrays, which can be analyzed with any WB chemiluminescent reader. See below for a schematic protocol, the fluorophore is a dye with equivalent to excitation/ emission to Cy3.

2. ASSAY SUMMARY



3. PRECAUTIONS

Please read these instructions carefully prior to beginning the assay.

All kit components have been formulated and quality control tested to function successfully as a kit. Modifications to the kit components or procedures may result in loss of performance.

4. STORAGE AND STABILITY

Store kit at -20°C immediately upon receipt.

Once thawed, for short-term storage, store the glass slide, cytokine standard mix, detection antibody cocktail and fluorophore labeled streptavidin at $\leq 20^{\circ}\text{C}$ and the sample diluent, wash buffers, slide washed/dryer and adhesive device sealer at $2-8^{\circ}\text{C}$.

Refer to list of materials supplied for storage conditions of individual components. Observe the storage conditions for individual prepared components in the Reagent Preparation section.

5. MATERIALS SUPPLIED

Item	Quantity			Storage Condition (Before Preparation)
	8 Tests	22 Tests	50 Tests	
Cy3 equivalent dye-conjugated Streptavidin	4 X 5 µL	8 X 5 µL	16 X 5 µL	-20°C
Sample Diluent	4 X 15 mL	4 X 15 mL	8 X 15 mL	-20°C
20X Wash Buffer I	8 X 30 mL	12 X 30 mL	24 X 30 mL	-20°C
20X Wash Buffer II	4 X 30 mL	4 X 30 mL	8 X 30 mL	-20°C
Slide Washer/Dryer (30 mL Centrifuge Tube)	4 Units	4 Units	8 Units	-20°C
Human Inflammation Array (40 T) Biotinylated Antibody Cocktail	1 X 25 µL	2 X 25 µL	4 X 25 µL	-20°C
Human Inflammation Array (40 T) Glass Slide	1 Slide	2 Slides	4 Slides	-20°C
Human Inflammation Array (40 T) Lyophilized Cytokine Standard Mix	1 Vial	1 Vial	2 Vials	-20°C
Human Growth Factor Array (40 T) Biotinylated Antibody Cocktail	1 X 25 µL	2 X 25 µL	4 X 25 µL	-20°C
Human Growth Factor Array (40 T) Glass Slide	1 Slide	2 Slides	4 Slides	-20°C
Human Growth Factor Array (40 T) Lyophilized Cytokine Standard Mix	1 Vial	1 Vial	2 Vials	-20°C
Human Chemokine Array (40 T) Biotinylated Antibody Cocktail	1 X 25 µL	2 X 25 µL	4 X 25 µL	-20°C
Human Chemokine Array (40 T) Glass Slide	1 Slide	2 Slides	4 Slides	-20°C
Human Chemokine Array (40 T) Lyophilized Cytokine Standard Mix	1 Vial	1 Vial	2 Vials	-20°C
Human Receptor Array (40 T) Biotinylated Antibody Cocktail	1 X 25 µL	2 X 25 µL	4 X 25 µL	-20°C
Human Receptor Array (40 T) Glass Slide	1 Slide	2 Slides	4 Slides	-20°C
Human Receptor Array (40 T) Lyophilized Cytokine Standard Mix	1 Vial	1 Vial	2 Vials	-20°C
Adhesive film	4 Units	8 Units	16 Units	-20°C

6. MATERIALS REQUIRED, NOT SUPPLIED

These materials are not included in the kit, but will be required to successfully utilize this assay:

- Pipettors, pipet tips and other common lab consumables.
- Distilled Water.
- Orbital shaker or oscillating rocker.
- Laser scanner for fluorescence detection.
- Aluminum foil.
- 1.5 mL Polypropylene microcentrifuge tubes.

7. LIMITATIONS

- Assay kit intended for research use only. Not for use in diagnostic procedures
- Do not mix or substitute reagents or materials from other kit lots or vendors. Kits are QC tested as a set of components and performance cannot be guaranteed if utilized separately or substituted.

8. TECHNICAL HINTS

Multiple slide array kits

- Some of our quantitative antibody array kits are provided with different arrays on different slides within the kit to make up the total array. If this kit has multiple array maps in Section 12 of this protocol, then it is one of those kits. In these cases, there are different sets of reagents provided for the different arrays. The glass array slide, lyophilized protein standards and detection antibody cocktails are specific for each different array and cannot be mixed between arrays - ensure that you use the correct components together for each array. The other reagents can be used with any of the arrays. The protocol instructions below are for each individual array within the set.

Handling glass array slides

- Do not touch the surface of the slides, as the microarray slides are very sensitive. Hold the slides by the edges only.
- Handle all buffers and slides with latex free gloves.
- Handle glass array slide in clean environment.
- Because there is no barcode on the slide, transcribe the slide serial number from the slide bag to the back of the slide with a permanent marker before discarding the slide bag. Once the slide is disassembled, you might not have enough info to distinguish one slide from the other.

Incubation

- Completely cover array area with sample or buffer during incubation.
- Avoid foaming during incubation steps.
- Perform all incubation and wash steps under gentle rotation.
- Cover the incubation chamber with adhesive film during incubation, particularly when incubation is more than 2 hours or <70 μL of sample or reagent is used.
- Several incubation steps such as step 13.1 (blocking), step 13.2 (sample incubation), step 13.6 (detection antibody incubation), or step 13.9 (Fluorophore-labeled streptavidin incubation) may be done overnight at 2-8°C.
- Please make sure to cover the incubation chamber tightly to prevent evaporation.

Completely air dry the glass array slide

- Take out the glass array slide from the box, and let it equilibrate to room temperature inside the sealed plastic bag for 30 minutes.
- Remove slide from the plastic bag; peel off the cover film, and let it air dry at room temperature for another 1.5 hours.
- Note: Incomplete drying of slides before use may cause the formation of “comet tails”.

Using the slide scanner and data extraction software with the quantitative antibody array slides

- Using the following guidelines, along with scanner settings that reduce the background as much as possible, you should get very good results (inter-assay and intra-assay CV <15%).
- Most gene microarray laser scanners are compatible with GAL file formats, which define a grid matching the array map. You may request a GAL file from Abcam at no charge.
- Scan using Cy3-compatible (green; 532 nm) laser only.
- Define the area for signal capture for all spots as a circle with 110-120 micron diameter, ignoring any “comet tails”. In some

cases, you may need to manually align circles in the super-imposed grid to match the antibody spots on the array.

- Use MEDIAN signal values, not the total or the mean. This minimizes the influence of “comet tails” and outlier data.
- Use local background correction (also using Median value).
- The laser power, photomultiplier tube (PMT) or other signal gain settings of the scanner may be used to increase spot signal intensities and/or to reduce background signals. Optimal settings will generate:
 - Strong positive control signals, where $POS1 > POS2 > POS3$
 - Low and even background signals
 - A wide range of signal intensities for antibody spots
- Adjusting the brightness and contrast settings on your data extraction software can improve the quality of the scanned image. Changing these settings only affects the image as seen on your computer monitor and has no net effect on the data that can be extracted from the image.
- For any given analyte, you should only compare fluorescence data generated using the same laser power, PMT and/or signal gain settings for all sub-arrays for which you wish to compare the results. However, you may scan all slides at multiple settings to obtain optimal signal responses for each analyte. For example, you may use data obtained with a higher PMT value for weaker signals and data obtained with a lower PMT for stronger signals.
- We recommend that if you are using the same standard curve across multiple slides, that you reserve 2 arrays from each additional slide and use them with 2 dilutions of protein standards, e.g. dilutions 3 and 6. These can be used to confirm that there is no significant difference in linearity of response between different slides.

9. REAGENT PREPARATION

Keep all reagents at RT during preparation. Reagents should only be used in their 1X working concentration.

9.1. 1X Wash Buffer I

Dilute 20X Wash Buffer I 20-fold with distilled or deionized water to prepare the 1X Wash Buffer I.

9.2. 1X Wash Buffer II

Dilute 20X Wash Buffer II 20-fold with distilled or deionized water to prepare the 1X Wash Buffer II.

9.3. 1X Human Inflammation Array (40 T) Biotinylated Antibody Cocktail

After briefly spinning down, reconstitute the detection antibody by adding 1.4 mL of Sample Diluent to the tube. Mix gently.

9.4. 1X Human Growth Factor Array (40 T) Biotinylated Antibody Cocktail

After briefly spinning down, reconstitute the detection antibody by adding 1.4 mL of Sample Diluent to the tube. Mix gently.

9.5. 1X Human Chemokine Array (40 T) Biotinylated Antibody Cocktail

After briefly spinning down, reconstitute the detection antibody by adding 1.4 mL of Sample Diluent to the tube. Mix gently.

9.6. 1X Human Receptor Array (40 T) Biotinylated Antibody Cocktail

After briefly spinning down, reconstitute the detection antibody by adding 1.4 mL of Sample Diluent to the tube. Mix gently.

9.7. 1X Cy3 equivalent dye-conjugated streptavidin

After briefly spinning down, add 1.4 mL of Sample Diluent to Cy3 equivalent dye-conjugated streptavidin tube. Mix gently

9.8. Sample Diluent

Sample Diluent is provided Ready to Use.

10. STANDARD PREPARATION

- Prepare serially diluted standards immediately prior to use.
- Always prepare a fresh set of standards for every use.
- There is only one vial of standard provided in the two-slide kit, which is enough to make two standard curves.
- Reconstitute the lyophilized standard within one hour of usage.
- If you need to use the standard over two different days, store only the Std1 dilution at -80°C.

*Note: Since the starting concentration of each cytokine is different, the serial concentrations from **Standard #1** to **Standard #7** for each cytokine are varied which can be found in the section Array Map and Analyte Standard Concentrations. The same standard curve can be used across multiple slides if you are running all slides at the same time. In this case, we recommend to include a Std3 and Control in the slides without standard curve for slide normalization. If you are testing the slides separately, you should run a full standard curve on each slide.*

- 10.1 Reconstitute the Standard Mix (lyophilized) by adding 500 μ L Sample Diluent to the tube. For best recovery, always quick-spin vial prior to opening. Dissolve the powder thoroughly by a gentle mix. Label the tube as **Standard #1**.
- 10.2 Label 7 further tubes as Tube #2 to Tube #8.
- 10.3 Add 200 μ L Sample Diluent into tube # 2-7.
- 10.4 Pipette 100 μ L **Standard #1** into tube #2 and mix gently.
- 10.5 Perform 5 more serial dilutions by adding 100 μ L **Standard #2** to tube #3 and so on.
- 10.6 Add 100 μ L Sample Diluent to tube #8 (**Control**). Do not add standard cytokines or samples to tube #8 (**Control**),

which will be used as Negative control. For best results, include a set of standards on each slide.

Standard Dilution Preparation Table

Standard #	Sample to Dilute	Volume to Dilute (μL)	Volume of Diluent (μL)
1	See section 10.1		
2	Standard #1	100	200
3	Standard #2	100	200
4	Standard #3	100	200
5	Standard #4	100	200
6	Standard #5	100	200
7	Standard #6	100	200
8 (Control)	-	-	100



11. SAMPLE PREPARATION

- Use serum-free conditioned media if possible.
- If serum-containing conditioned media is required, it is highly recommended that complete medium be used as a control since many types of sera contains cytokines.
- We recommend the following parameters for other samples: 50 to 100 μL of original or diluted serum, plasma, cell culture media, or other body fluid, or 50-500 μg/mL of protein for cell and tissue lysates.
- If you experience high background or the readings exceed the detection range, further dilution of your sample is recommended.

12. ARRAY MAP

POS – Positive Control

NEG – Negative Control

BLANK – No Antibody

Array Map for Human Inflammation Antibody Array (40 Targets)-
Quantitative (ab197451).

	1,2,3,4	5,6,7,8	9,10,11,12
<i>a</i>	POS1	POS2	BLC
<i>b</i>	Eotaxin	Eotaxin-2	G-CSF
<i>c</i>	GM-CSF	I-309	ICAM-1
<i>d</i>	IFN γ	IL-1 α	IL-1 β
<i>e</i>	IL-1ra	IL-2	IL-4
<i>f</i>	IL-5	IL-6	IL-6sR
<i>g</i>	IL-7	IL-8	IL-10
<i>h</i>	IL-11	IL-12p40	IL-12p70
<i>i</i>	IL-13	IL-15	IL-16
<i>j</i>	IL-17	MCP-1	MCSF
<i>k</i>	MIG	MIP-1 α	MIP-1 β
<i>l</i>	MIP-1 δ	PDGF-BB	RANTES
<i>m</i>	TIMP-1	TIMP-2	TNF α
<i>n</i>	TNF β	TNF RI	TNF RII

ASSAY PREPARATION

Array Map for Human Growth Factor Antibody Array (40 Targets) – Quantitative (ab197445).

	1,2,3,4	5,6,7,8	9,10,11,12
a	POS1	POS2	AR
b	BDNF	bFGF	BMP-4
c	BMP-5	BMP-7	β -NGF
d	EGF	EGF R	EG-VEGF
e	FGF-4	FGF-7	GDF-15
f	GDNF	GH	HB-EGF
g	HGF	IGFBP-1	IGFBP-2
h	IGFBP-3	IGFBP-4	IGFBP-6
i	IGF-I	Insulin	MCF R
j	NGF R	NT-3	NT-4
k	OPG	PDGF-AA	PIGF
l	SCF	SCF R	TGF α
m	TGF β 1	TGF β 3	VEGF
n	VEGF R2	VEGF R3	VEGF-D

Array Map for Human Chemokine Antibody Array (40 Targets)- Quantitative (ab197435).

	1,2,3,4	5,6,7,8	9,10,11,12
a	POS1	POS2	6Ckine
b	Axl	BTC	CCL28
c	CTACK	CXCL16	ENA-78
d	Eotaxin-3	GCP-2	GRO
e	HCC-1	HCC-4	IL-9
f	IL-17F	IL-18 BPa	IL-28A
g	IL-29	IL-31	IP-10
h	I-TAC	LIF	LIGHT
i	Lymphotactin	MCP-2	MCP-3
j	MCP-4	MDC	MIF
k	MIP-3 α	MIP-3 β	MPIF-1
l	MSP α	NAP-2	OPN
m	PARC	PF4	SDF-1 α
n	TARC	TECK	TSLP

ASSAY PREPARATION

Array Map for Human Receptor Antibody Array (40 Targets)–
Quantitative (ab197455).

	1,2,3,4	5,6,7,8	9,10,11,12
a	POS1	POS2	4-1BB
b	ALCAM	B7-1	BCMA
c	CD14	CD30	CD40 L
d	CEACAM-1	DR6	Dtk
e	Endoglin	ErbB3	E-Selectin
f	Fas	Flt-3L	GITR
g	HVEM	ICAM-3	IL-1 R4
h	IL-1 RI	IL-2 R γ	IL-10 R β
i	IL-17R	IL-21R	LIMPII
j	Lipocalin-2	L-Selectin	LYVE-1
k	MICA	MICB	NRG1- β 1
l	PDGF R β	PECAM-1	RAGE
m	TIM-1	TRAIL R3	Trappin-2
n	uPAR	VCAM-1	XEDAR

Note: After reconstitution of the lyophilized cytokine standard mix, the 8-point cytokine concentration used for generating the standard curve of a given antigen is listed below. The detection sensitivity of each protein in one experiment is user dependent.

ASSAY PREPARATION

Serial standard concentration (pg/ml) for Human Inflammation Antibody Array (40 Targets)- Quantitative (ab197451).

(pg/ml)	Cntrl	Std7	Std6	Std5	Std4	Std3	Std2	Std1
BLC	0	3	8	25	74	222	667	2,000
Eotaxin	0	5	16	49	148	444	1,333	4,000
Eotaxin-2	0	1	4	12	37	111	333	1,000
G-CSF	0	27	82	247	741	2,222	6,667	20,000
GM-CSF	0	1	4	12	37	111	333	1,000
I-309	0	5	16	49	148	444	1,333	4,000
ICAM-1	0	137	412	1,235	3,704	11,111	33,333	100,000
IFNg	0	3	8	25	74	222	667	2,000
IL-1a	0	3	8	25	74	222	667	2,000
IL-1b	0	1	4	12	37	111	333	1,000
IL-1ra	0	3	8	25	74	222	667	2,000
IL-2	0	3	8	25	74	222	667	2,000
IL-4	0	3	8	25	74	222	667	2,000
IL-5	0	5	16	49	148	444	1,333	4,000
IL-6	0	3	8	25	74	222	667	2,000
IL-6sR	0	14	41	123	370	1,111	3,333	10,000
IL-7	0	5	16	49	148	444	1,333	4,000
IL-8	0	1	2	6	19	56	167	500
IL-10	0	5	16	49	148	444	1,333	4,000
IL-11	0	27	82	247	741	2,222	6,667	20,000
IL-12p40	0	14	41	123	370	1,111	3,333	10,000
IL-12p70	0	1	2	6	19	56	167	500
IL-13	0	1	4	12	37	111	333	1,000
IL-15	0	5	16	49	148	444	1,333	4,000
IL-16	0	7	21	62	185	556	1,667	5,000
IL-17	0	5	16	49	148	444	1,333	4,000
MCP-1	0	3	8	25	74	222	667	2,000
MCSF	0	5	16	49	148	444	1,333	4,000
MIG	0	7	21	62	185	556	1,667	5,000
MIP-1a	0	14	41	123	370	1,111	3,333	10,000
MIP-1b	0	1	4	12	37	111	333	1,000
MIP-1d	0	14	41	123	370	1,111	3,333	10,000
PDGF-BB	0	3	8	25	74	222	667	2,000
RANTES	0	27	82	247	741	2,222	6,667	20,000
TIMP-1	0	55	165	494	1,481	4,444	13,333	40,000
TIMP-2	0	55	165	494	1,481	4,444	13,333	40,000
TNFa	0	3	8	25	74	222	667	2,000
TNFB	0	27	82	247	741	2,222	6,667	20,000
TNF RI	0	55	165	494	1,481	4,444	13,333	40,000
TNF RII	0	55	165	494	1,481	4,444	13,333	40,000

ASSAY PREPARATION

Serial standard concentration (pg/ml) for Human Growth Factor Antibody Array (40 Targets) – Quantitative (ab197445).

(pg/ml)	Cntrl	Std7	Std6	Std5	Std4	Std3	Std2	Std1
AR	0	14	41	123	370	1,111	3,333	10,000
BDNF	0	3	8	25	74	222	667	2,000
bFGF	0	27	82	247	741	2,222	6,667	20,000
BMP-4	0	137	412	1,235	3,704	11,111	33,333	100,000
BMP-5	0	137	412	1,235	3,704	11,111	33,333	100,000
BMP-7	0	55	165	494	1,481	4,444	13,333	40,000
β -NGF	0	14	41	123	370	1,111	3,333	10,000
EGF	0	0	1	2	7	22	67	200
EGF R	0	14	41	123	370	1,111	3,333	10,000
EG-VEGF	0	14	41	123	370	1,111	3,333	10,000
FGF-4	0	137	412	1,235	3,704	11,111	33,333	100,000
FGF-7	0	14	41	123	370	1,111	3,333	10,000
GDF-15	0	3	8	25	74	222	667	2,000
GDNF	0	5	16	49	148	444	1,333	4,000
GH	0	14	41	123	370	1,111	3,333	10,000
HB-EGF	0	14	41	123	370	1,111	3,333	10,000
HGF	0	5	16	49	148	444	1,333	4,000
IGFBP-1	0	7	21	62	185	556	1,667	5,000
IGFBP-2	0	27	82	247	741	2,222	6,667	20,000
IGFBP-3	0	274	823	2,469	7,407	22,222	66,667	200,000
IGFBP-4	0	274	823	2,469	7,407	22,222	66,667	200,000
IGFBP-6	0	137	412	1,235	3,704	11,111	33,333	100,000
IGF-I	0	27	82	247	741	2,222	6,667	20,000
Insulin	0	27	82	247	741	2,222	6,667	20,000
MCF R	0	55	165	494	1,481	4,444	13,333	40,000
NGF R	0	14	41	123	370	1,111	3,333	10,000
NT-3	0	55	165	494	1,481	4,444	13,333	40,000
NT-4	0	14	41	123	370	1,111	3,333	10,000
OPG	0	5	16	49	148	444	1,333	4,000
PDGF-AA	0	14	41	123	370	1,111	3,333	10,000
PIGF	0	5	16	49	148	444	1,333	4,000
SCF	0	14	41	123	370	1,111	3,333	10,000
SCF R	0	27	82	247	741	2,222	6,667	20,000
TGF α	0	14	41	123	370	1,111	3,333	10,000
TGF β 1	0	137	412	1,235	3,704	11,111	33,333	100,000
TGF β 3	0	55	165	494	1,481	4,444	13,333	40,000
VEGF	0	14	41	123	370	1,111	3,333	10,000
VEGF R2	0	14	41	123	370	1,111	3,333	10,000
VEGF R3	0	55	165	494	1,481	4,444	13,333	40,000
VEGF-D	0	27	82	247	741	2,222	6,667	20,000

ASSAY PREPARATION

Serial standard concentration (pg/ml) for Human Chemokine Antibody Array (40 Targets)- Quantitative (ab197435)

(pg/ml)	Cntrl	Std7	Std6	Std5	Std4	Std3	Std2	Std1
6CKine	0	55	165	494	1,481	4,444	13,333	40,000
Axl	0	5	16	49	148	444	1,333	4,000
BTC	0	27	82	247	741	2,222	6,667	20,000
CCL28	0	55	165	494	1,481	4,444	13,333	40,000
CTACK	0	69	206	617	1,852	5,556	16,667	50,000
CXCL16	0	27	82	247	741	2,222	6,667	20,000
ENA-78	0	14	41	123	370	1,111	3,333	10,000
Eotaxin-3	0	27	82	247	741	2,222	6,667	20,000
GCP-2	0	14	41	123	370	1,111	3,333	10,000
GRO	0	1	4	12	37	111	333	1,000
HCC-1	0	5	16	49	148	444	1,333	4,000
HCC-4	0	14	41	123	370	1,111	3,333	10,000
IL-9	0	274	823	2,469	7,407	22,222	66,667	200,000
IL-17F	0	137	412	1,235	3,704	11,111	33,333	100,000
IL-18 BPa	0	82	247	741	2,222	6,667	20,000	60,000
IL-28A	0	14	41	123	370	1,111	3,333	10,000
IL-29	0	137	412	1,235	3,704	11,111	33,333	100,000
IL-31	0	55	165	494	1,481	4,444	13,333	40,000
IP-10	0	14	41	123	370	1,111	3,333	10,000
I-TAC	0	14	41	123	370	1,111	3,333	10,000
LIF	0	18	53	160	481	1,444	4,333	13,000
LIGHT	0	14	41	123	370	1,111	3,333	10,000
Lymphotactin	0	137	412	1,235	3,704	11,111	33,333	100,000
MCP-2	0	3	8	25	74	222	667	2,000
MCP-3	0	5	16	49	148	444	1,333	4,000
MCP-4	0	14	41	123	370	1,111	3,333	10,000
MDC	0	14	41	123	370	1,111	3,333	10,000
MIF	0	5	16	49	148	444	1,333	4,000
MIP-3a	0	5	16	49	148	444	1,333	4,000
MIP-3b	0	27	82	247	741	2,222	6,667	20,000
MPIF-1	0	14	41	123	370	1,111	3,333	10,000
MSPa	0	137	412	1,235	3,704	11,111	33,333	100,000
NAP-2	0	5	16	49	148	444	1,333	4,000
OPN	0	137	412	1,235	3,704	11,111	33,333	100,000
PARC	0	5	16	49	148	444	1,333	4,000
PF4	0	137	412	1,235	3,704	11,111	33,333	100,000
SDF-1a	0	14	41	123	370	1,111	3,333	10,000
TARC	0	14	41	123	370	1,111	3,333	10,000
TECK	0	137	412	1,235	3,704	11,111	33,333	100,000
TSLP	0	14	41	123	370	1,111	3,333	10,000

ASSAY PREPARATION

Serial standard concentration (pg/ml) Array Map for Human Receptor Antibody Array (40 Targets)– Quantitative (ab197455).

(pg/ml)	Cntrl	Std7	Std6	Std5	Std4	Std3	Std2	Std1
4-1BB	0	14	41	123	370	1,111	3,333	10,000
ALCAM	0	14	41	123	370	1,111	3,333	10,000
B7-1	0	14	41	123	370	1,111	3,333	10,000
BCMA	0	27	82	247	741	2,222	6,667	20,000
CD14	0	14	41	123	370	1,111	3,333	10,000
CD30	0	14	41	123	370	1,111	3,333	10,000
CD40 L	0	14	41	123	370	1,111	3,333	10,000
CEACAM-1	0	14	41	123	370	1,111	3,333	10,000
DR6	0	5	16	49	148	444	1,333	4,000
Dtk	0	27	82	247	741	2,222	6,667	20,000
Endoglin	0	5	16	49	148	444	1,333	4,000
ErbB3	0	27	82	247	741	2,222	6,667	20,000
E-Selectin	0	55	165	494	1,481	4,444	13,333	40,000
Fas	0	3	8	25	74	222	667	2,000
Flt-3L	0	3	8	25	74	222	667	2,000
GITR	0	14	41	123	370	1,111	3,333	10,000
HVEM	0	55	165	494	1,481	4,444	13,333	40,000
ICAM-3	0	137	412	1,235	3,704	11,111	33,333	100,000
IL-1 R4	0	5	16	49	148	444	1,333	4,000
IL-1 RI	0	5	16	49	148	444	1,333	4,000
IL-2 R γ	0	14	41	123	370	1,111	3,333	10,000
IL-10 R β	0	5	16	49	148	444	1,333	4,000
IL-17R	0	14	41	123	370	1,111	3,333	10,000
IL-21R	0	27	82	247	741	2,222	6,667	20,000
LIMPII	0	5	16	49	148	444	1,333	4,000
Lipocalin-2	0	1	4	12	37	111	333	1,000
L-Selectin	0	137	412	1,235	3,704	11,111	33,333	100,000
LYVE-1	0	3	8	25	74	222	667	2,000
MICA	0	14	41	123	370	1,111	3,333	10,000
MICB	0	21	62	185	556	1,667	5,000	15,000
NRG1- β 1	0	21	62	185	556	1,667	5,000	15,000
PDGF R β	0	137	412	1,235	3,704	11,111	33,333	100,000
PECAM-1	0	27	82	247	741	2,222	6,667	20,000
RAGE	0	14	41	123	370	1,111	3,333	10,000
TIM-1	0	14	41	123	370	1,111	3,333	10,000
TRAIL R3	0	7	21	62	185	556	1,667	5,000
Trappin-2	0	14	41	123	370	1,111	3,333	10,000
uPAR	0	55	165	494	1,481	4,444	13,333	40,000
VCAM-1	0	274	823	2,469	7,407	22,222	66,667	200,000
XEDAR	0	14	41	123	370	1,111	3,333	10,000

13. ASSAY PROCEDURE

Please prepare all reagents immediately prior to use.

- 13.1 Add 100 μL Sample Diluent into each well and incubate at room temperature for 30 minutes to block slides.
- 13.2 Decant buffer from each well. Add 100 μL standard cytokines or samples to each well. Incubate arrays at room temperature for 1-2 hours. (Longer incubation time is preferable for higher signals).

Note: We recommend using 50 to 100 μL of original or diluted serum, plasma, conditioned media, or other body fluid, or 50-500 $\mu\text{g}/\text{mL}$ of protein for cell and tissue lysates.

- 13.3 Cover the incubation chamber with adhesive film during incubation if less than 70 μL of sample or reagent is used.

Note: This step may be done overnight at 2-8°C for best results.

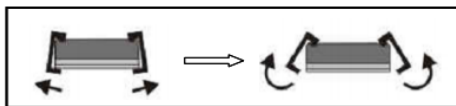
- 13.4 Wash: Decant the samples from each well, and wash 5 times (5 minutes each) with 150 μL of 1X Wash Buffer I at room temperature with gentle shaking. Completely remove wash buffer in each wash step.
- 13.5 (Optional for Cell and Tissue Lysates): Put the glass array slide with frame into a box with 1X Wash Buffer I (cover the whole glass slide and frame with Wash Buffer I), and wash at room temperature with gentle shaking for 20 minutes.
- 13.6 Decant the 1X Wash Buffer I from each well, wash 2 times (5 minutes each) with 150 μL of 1X Wash Buffer II at room temperature with gentle shaking. Completely remove wash buffer in each wash step.

Note: Incomplete removal of the wash buffer in each wash step may cause “dark spots”. (i.e. Background signal is higher than that of the spot.)

- 13.7 Reconstitute the detection antibody as shown in the Reagent preparation section.

ASSAY PROCEDURE

- 13.8 Add 80 μL of the detection antibody cocktail to each well. Incubate at room temperature for 1-2 hour. (Longer incubation time is preferable for higher signals and backgrounds). Note: incubation may be done at 2-8°C for overnight.
- 13.9 Decant the samples from each well, and wash 5 times with 150 μL of 1X Wash Buffer I and then 2 times with 150 μL of 1X Wash Buffer II at room temperature with gentle shaking. Completely remove wash buffer in each wash step.
- 13.10 Reconstitute the Cy3 equivalent dye-conjugated streptavidin as shown in the Reagent preparation section.
- 13.11 Add 80 μL of Cy3 equivalent dye-conjugated streptavidin to each well. Cover the device with aluminum foil to avoid exposure to light or incubate in dark room. Incubate at room temperature for 1 hour.
- 13.12 Decant the samples from each well, and wash 5 times with 150 μL of 1X Wash Buffer I at room temperature with gentle shaking. Completely remove wash buffer in each wash step.
- 13.13 Disassemble the device by pushing clips outward from the slide side. (Be careful not to touch the surface of the array side.)



- 13.14 Place the slide in the slide Washer/Dryer (a 4-slide holder/centrifuge tube), add enough 1X Wash Buffer I (about 30 mL) to cover the whole slide, and then gently shake at room temperature for 15 minutes. Decant Wash Buffer I. Wash with 1X Wash Buffer II (about 30 mL) with gentle, and gently shake at room temperature for 5 minutes.

13.15 Remove water droplets completely by one of the following ways:

- a). Put the glass array slide into the Slide Washer/Dryer, and dry the glass array slide by centrifuge at 1,000 rpm for 3 minutes without cap.
- b) Dry the glass array slide with a compressed N₂ stream.
- c) Gently apply suction with a pipette to remove water droplets.

Do not touch the array, only the sides.

13.16 Imaging: The signals can be visualized through use of a laser scanner equipped with a Cy3 wavelength such as Axon GenePix. Make sure that the signal from the well containing the highest standard concentration (**Standard #1**) receives the highest possible reading, yet remains unsaturated.

Note: In case the signal intensity for different analytes varies greatly in the same array, we recommend using multiple scans, with a higher PMT for low signal analytes, and a low PMT for high signal analytes.

13.17 Data extraction can be done with most of the microarray analysis software (GenePix, ScanArray Express, ArrayVision, or MicroVigene).

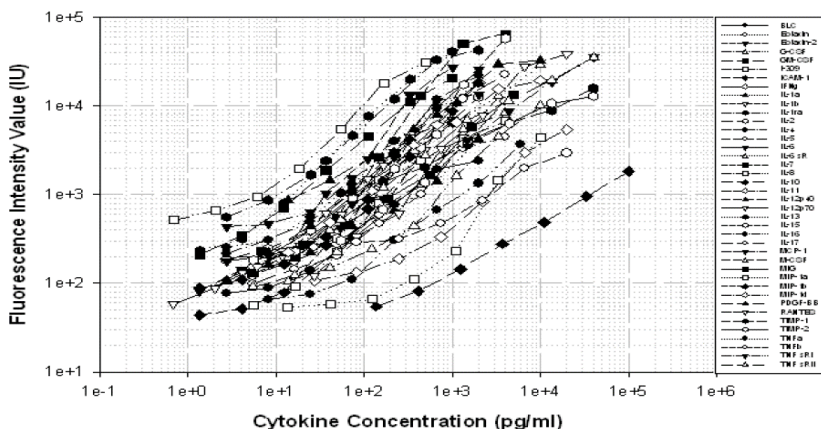
14. CALCULATIONS

- 14.1 Data extraction can be done with most commercially available microarray analysis software (GenePix, ScanArray Express or MicroVigene). Standard curves and extrapolated values will need to be calculated separately. You may use a standard curve performed on one slide to calculate values on other slides, so long as all of those slides were processed in parallel in the same batch.
- 14.2 There are 2 positive control spots in each array - POS1 and POS2. We recommend that researchers select one of the arrays used for the standard curve to be the reference array, calculate the ratio of POS1/POS2 in that array and then use that ratio to calculate an adjusted average of POS1 and POS2 in each array (i.e. by multiplying POS2 by the ratio from the reference array and taking the average of the result of that multiplication and POS1). Researchers should then normalise the values in each array back to the reference array using the ratio of the adjusted average and the POS1 value for the reference array. The reason for using the ratio to calculate an adjusted average is that the POS1 signal is several times that of POS2, so using a conventional average would skew the impact of POS1 over POS2.

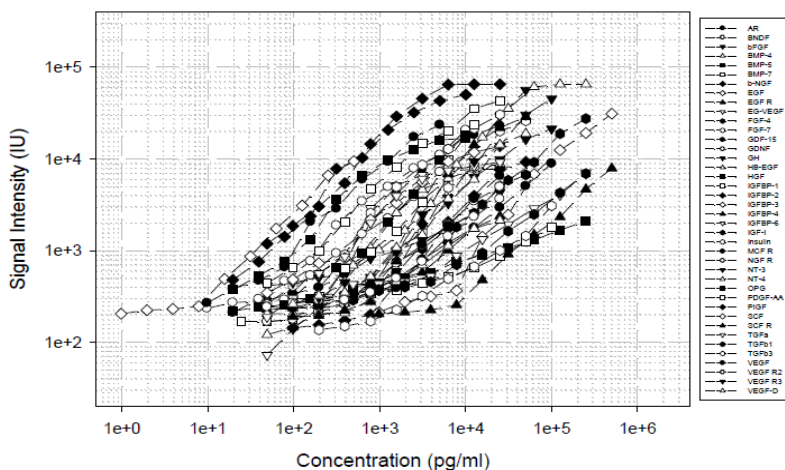
15. TYPICAL DATA

Typical results obtained with Abcam Antibody Arrays:

Standard Curves obtained with Human Inflammation Antibody Array (40 Targets)- Quantitative (ab197451).

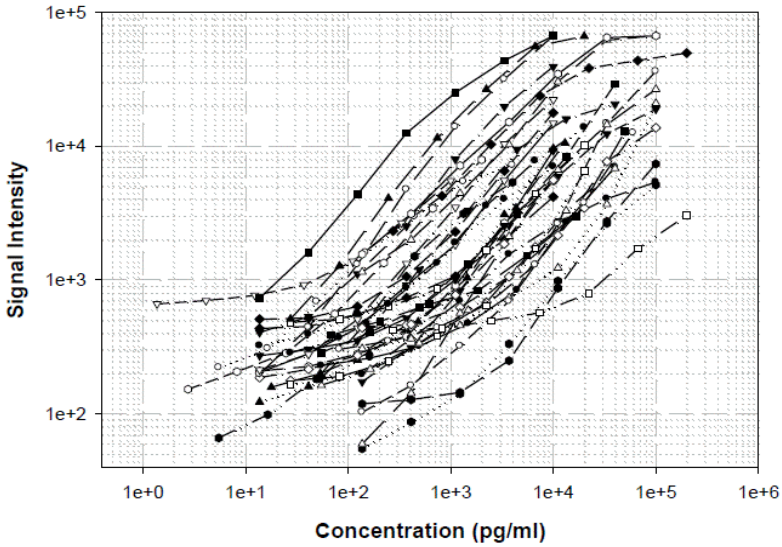


Standard Curves obtained with Human Growth Factor Antibody Array (40 Targets) – Quantitative (ab197445).

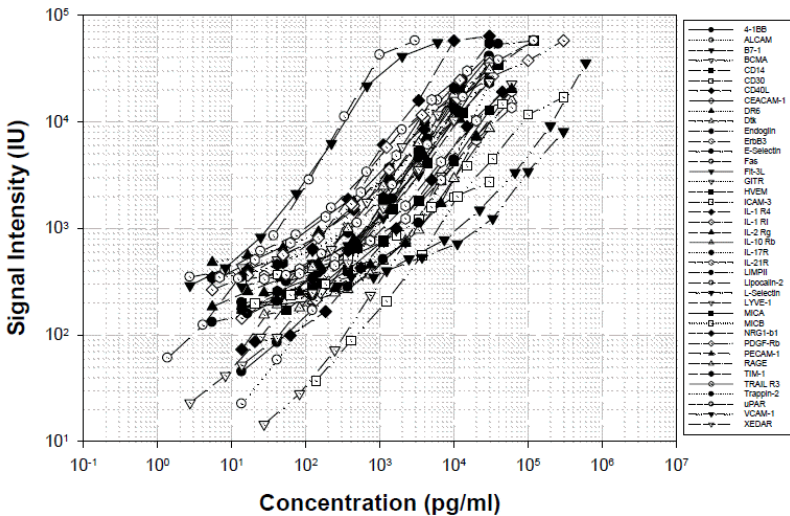


DATA ANALYSIS

Standard Curves obtained with Human Chemokine Antibody Array (40 Targets) - Quantitative (ab197435).



Standard Curves obtained with Human Receptor Antibody Array (40 Targets) – Quantitative (ab197455).



System recovery

The antibody pairs used in the kits have been tested to recognize their specific antigen. The spiking recovery rate of the cytokines by the kits in serum and cell culture media can be found in their individual manuals.

- (ab197451) Human Inflammation Antibody Array (40 Targets)- Quantitative,
- (ab197445) Human Growth Factor Antibody Array (40 Targets) – Quantitative
- (ab197435) Human Chemokine Antibody Array (40 Targets) - Quantitative
- (ab197455) Human Receptor Antibody Array (40 Targets) - Quantitative

16. TROUBLESHOOTING

Problem	Cause	Recommendation
Weak Signal	Inadequate detection	Increase laser power and PMT parameters
	Inadequate reagent volumes or improper dilution	Check pipettes and ensure correct preparation
	Short incubation time	Ensure sufficient incubation time and change sample incubation step to overnight
	Too low protein concentration in sample	Don't make too low dilution or concentrate sample
	Improper storage of kit	Store kit as suggested temperature. Don't freeze/thaw the slide.
Uneven signal	Bubble formed during incubation	Avoid bubble formation during incubation
	Arrays are not completely covered by reagent	Completely cover arrays with solution
	Reagent evaporation	Cover the incubation chamber with adhesive film during incubation
Poor standard curve	Cross-contamination from neighboring wells	Avoid overflowing wash buffer
	Comet tail formation	Air dry the slide for at least 1 hour before usage
	Inadequate standard reconstitution or Improper dilution	Reconstitute the lyophilized standard well at room temperature before making serial dilutions. Check pipettes and ensure proper serial dilutions.

RESOURCES

	Inadequate detection	Increase laser power that the highest standard concentration for each cytokine receives the highest possible reading yet remains unsaturated.
	Use freeze-thawed cytokine standards	Always use new cytokine standard vial for new sets of experiment. Discard any leftover.
High background	Overexposure	Lower the laser power
	Dark spots	Completely remove wash buffer in each wash step.
	Insufficient wash	Increase wash time and use more wash buffer
	Dust	Work in clean environment
	Slide is allowed to dry out.	Don't dry out slides during experiment.

17. NOTES



Technical Support

Copyright © 2024 Abcam. All Rights Reserved. The Abcam logo is a registered trademark. All information / detail is correct at time of going to print.

For all technical or commercial enquiries please go to:

www.abcam.com/contactus

www.abcam.cn/contactus (China)

www.abcam.co.jp/contactus (Japan)