



# **ab204522 – IL-17F (Interleukin-17F) Mouse SimpleStep ELISA<sup>®</sup> Kit**

## Instructions for Use

For the quantitative measurement of IL-17F (Interleukin-17F) in mouse serum, plasma and cell culture supernatant samples.

This product is for research use only and is not intended for diagnostic use.

# Table of Contents

---

## INTRODUCTION

1. BACKGROUND	2
2. ASSAY SUMMARY	3

## GENERAL INFORMATION

3. PRECAUTIONS	4
4. STORAGE AND STABILITY	4
5. MATERIALS SUPPLIED	4
6. MATERIALS REQUIRED, NOT SUPPLIED	4
7. LIMITATIONS	5
8. TECHNICAL HINTS	5

## ASSAY PREPARATION

9. REAGENT PREPARATION	7
10. STANDARD PREPARATION	8
11. SAMPLE PREPARATION	9
12. PLATE PREPARATION	10

## ASSAY PROCEDURE

13. ASSAY PROCEDURE	11
---------------------	----

## DATA ANALYSIS

14. CALCULATIONS	13
15. TYPICAL DATA	14
16. TYPICAL SAMPLE VALUES	16
17. ASSAY SPECIFICITY	19
18. SPECIES REACTIVITY	20

## RESOURCES

19. TROUBLESHOOTING	21
20. NOTES	22

## 1. BACKGROUND

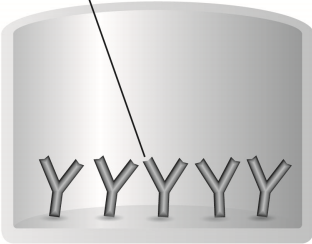
IL-17F (Interleukin-17F) mouse *in vitro* SimpleStep ELISA® (Enzyme-Linked Immunosorbent Assay) kit is designed for the quantitative measurement of IL-17F protein in mouse serum, plasma and cell culture supernatant samples.

The SimpleStep ELISA® employs an affinity tag labeled capture antibody and a reporter conjugated detector antibody which immunocapture the sample analyte in solution. This entire complex (capture antibody/analyte/detector antibody) is in turn immobilized via immunoaffinity of an anti-tag antibody coating the well. To perform the assay, samples or standards are added to the wells, followed by the antibody mix. After incubation, the wells are washed to remove unbound material. TMB Development Solution is added and during incubation is catalyzed by HRP, generating blue coloration. This reaction is then stopped by addition of Stop Solution completing any color change from blue to yellow. Signal is generated proportionally to the amount of bound analyte and the intensity is measured at 450 nm. Optionally, instead of the endpoint reading, development of TMB can be recorded kinetically at 600 nm.

IL-17F is an IL-17 family member cytokine that stimulates the production of other cytokines such as IL-6, IL-8 and granulocyte colony-stimulating factor, and can regulate cartilage matrix turnover. IL-17F stimulates PBMC and T-cell proliferation. IL-17F inhibits angiogenesis. IL-17F is a glycosylated, disulfide-linked homodimer. IL-17F is also present as IL-17A/F heterodimer. IL-17F is expressed in activated, but not resting, CD4+ T-cells and activated monocytes. It is secreted.

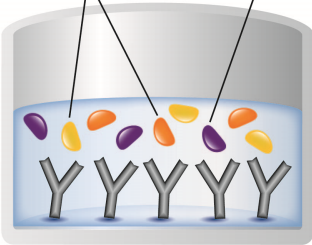
## 2. ASSAY SUMMARY

Immobilization Antibody



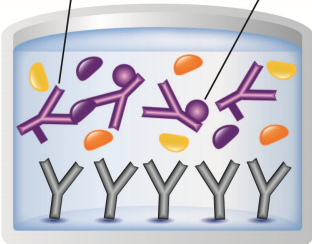
Remove appropriate number of antibody coated well strips. Equilibrate all reagents to room temperature. Prepare all reagents, samples, and standards as instructed.

Matrix Proteins Target Analyte



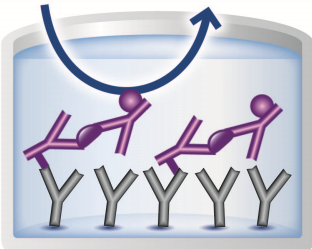
Add standard or sample to appropriate wells.

Capture Antibody Detector Antibody



Add Antibody Cocktail to all wells. Incubate at room temperature.

Substrate Color Development



Aspirate and wash each well. Add TMB Development Solution to each well and incubate. Add Stop Solution at a defined endpoint. Alternatively, record color development kinetically after TMB substrate addition.

### 3. PRECAUTIONS

**Please read these instructions carefully prior to beginning the assay.**

All kit components have been formulated and quality control tested to function successfully as a kit. Modifications to the kit components or procedures may result in loss of performance.

### 4. STORAGE AND STABILITY

**Store kit at 2-8°C immediately upon receipt.**

Refer to list of materials supplied for storage conditions of individual components. Observe the storage conditions for individual prepared components in the Reagent and Standard Preparation sections.

### 5. MATERIALS SUPPLIED

Item	Amount	Storage Condition (Before Preparation)
10X Mouse IL-17F Capture Antibody	600 µL	+2-8°C
10X Mouse IL-17F Detector Antibody	600 µL	+2-8°C
Mouse IL-17F Lyophilized Recombinant Protein	2 Vials	+2-8°C
Antibody Diluent 5BR	6 mL	+2-8°C
10X Wash Buffer PT	20 mL	+2-8°C
TMB Development Solution	12 mL	+2-8°C
Stop Solution	12 mL	+2-8°C
Sample Diluent NS	50 mL	+2-8°C
Sample Diluent 25BP	20 mL	+2-8°C
Pre-Coated 96 Well Microplate (12 x 8 well strips)	96 Wells	+2-8°C
Plate Seal	1	+2-8°C

## 6. MATERIALS REQUIRED, NOT SUPPLIED

These materials are not included in the kit, but will be required to successfully utilize this assay:

- Microplate reader capable of measuring absorbance at 450 or 600 nm.
- Method for determining protein concentration (BCA assay recommended).
- Deionized water.
- PBS (1.4 mM KH<sub>2</sub>PO<sub>4</sub>, 8 mM Na<sub>2</sub>HPO<sub>4</sub>, 140 mM NaCl, 2.7 mM KCl, pH 7.4).
- Multi- and single-channel pipettes.
- Tubes for standard dilution.
- Plate shaker for all incubation steps.
- Phenylmethylsulfonyl Fluoride (PMSF) (or other protease inhibitors).

## 7. LIMITATIONS

- Assay kit intended for research use only. Not for use in diagnostic procedures.
- Do not mix or substitute reagents or materials from other kit lots or vendors. Kits are QC tested as a set of components and performance cannot be guaranteed if utilized separately or substituted.

## 8. TECHNICAL HINTS

- Samples generating values higher than the highest standard should be further diluted in the appropriate sample dilution buffers.
- Avoid foaming or bubbles when mixing or reconstituting components.
- Avoid cross contamination of samples or reagents by changing tips between sample, standard and reagent additions.

- Ensure plates are properly sealed or covered during incubation steps.
- Complete removal of all solutions and buffers during wash steps is necessary to minimize background.
- As a guide, typical ranges of sample concentration for commonly used sample types are shown below in Sample Preparation (section 11).
- All samples should be mixed thoroughly and gently.
- Avoid multiple freeze/thaw of samples.
- Incubate ELISA plates on a plate shaker during all incubation steps.
- When generating positive control samples, it is advisable to change pipette tips after each step.
- **To avoid high background always add samples or standards to the well before the addition of the antibody cocktail.**
- **This kit is sold based on number of tests. A ‘test’ simply refers to a single assay well. The number of wells that contain sample, control or standard will vary by product. Review the protocol completely to confirm this kit meets your requirements. Please contact our Technical Support staff with any questions.**

## 9. REAGENT PREPARATION

- Equilibrate all reagents to room temperature (18-25°C) prior to use. The kit contains enough reagents for 96 wells. **The sample volumes below are sufficient for 48 wells (6 x 8-well strips); adjust volumes as needed for the number of strips in your experiment.**
- Prepare only as much reagent as is needed on the day of the experiment. Capture and Detector Antibodies have only been tested for stability in the provided 10X formulations.

### 9.1 **1X Wash Buffer PT**

Prepare 1X Wash Buffer PT by diluting 10X Wash Buffer PT with deionized water. To make 50 mL 1X Wash Buffer PT combine 5 mL 10X Wash Buffer PT with 45 mL deionized water. Mix thoroughly and gently.

### 9.2 **Antibody Cocktail**

Prepare Antibody Cocktail by diluting the capture and detector antibodies in Antibody Diluent 5BR. To make 3 mL of the Antibody Cocktail combine 300  $\mu$ L 10X Capture Antibody and 300  $\mu$ L 10X Detector Antibody with 2.4 mL Antibody Diluent 5BR. Mix thoroughly and gently.

## 10. STANDARD PREPARATION

Prepare serially diluted standards immediately prior to use. Always prepare a fresh set of positive controls for every use.

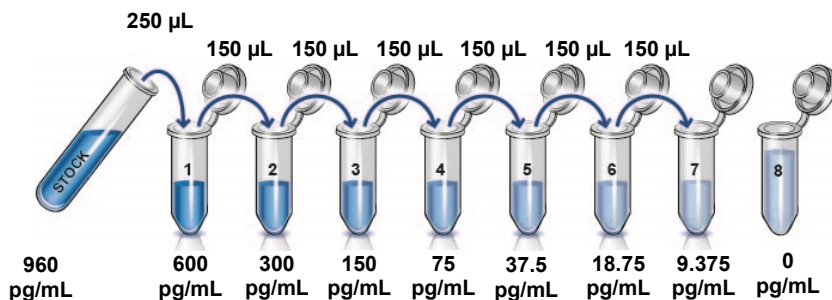
The following table describes the preparation of a standard curve for duplicate measurements (recommended).

**IMPORTANT:** If the protein standard vial has a volume identified on the label, reconstitute the IL-17F standard by adding that volume of Diluent indicated on the label. Alternatively, if the vial has a mass identified, reconstitute the IL-17F standard by adding 500  $\mu\text{L}$  Diluent. Hold at room temperature for 10 minutes and mix gently. This is the 960  $\text{pg/mL}$  **Stock Standard** Solution.

For **cell culture supernatant** samples measurements, reconstitute the IL-17F standard by adding Sample Diluent NS to the vial.

For **serum and plasma** samples measurements, reconstitute the IL-17F standard by adding Sample Diluent 25BP to the vial.

- 10.1 Label eight tubes, Standards 1–8.
- 10.2 Add 150  $\mu\text{L}$  of appropriate diluent into tube number 1 and 150  $\mu\text{L}$  of appropriate diluent into numbers 2-8.  
For **cell culture supernatant** samples measurements, use Sample Diluent NS as the diluent.  
For **serum and plasma** samples measurements, use Sample Diluent 25BP as the diluent.
- 10.3 Use the Stock Standard to prepare the following dilution series. Standard #8 contains no protein and is the Blank control:





## 11. SAMPLE PREPARATION

TYPICAL SAMPLE DYNAMIC RANGE	
Sample Type	Range (%)
Supernatant of Mouse spleen treated for 4 days with 10 ng/mL PMA and 10 ng/mL IL-1a	6.25 – 100
Mouse Serum	6.25 – 25
Mouse Plasma - Citrate	6.25 – 25
Mouse Plasma - EDTA	6.25 – 25
Mouse Plasma - Heparin	12.5 – 25

### 11.1 Plasma

Collect plasma using citrate, EDTA or heparin. Centrifuge samples at 2,000 x g for 10 minutes. Dilute samples at least 4 fold into Sample Diluent 25BP and assay. Store un-diluted plasma samples at -20°C or below for up to 3 months. Avoid repeated freeze-thaw cycles.

### 11.2 Serum

Samples should be collected into a serum separator tube. After clot formation, centrifuge samples at 2,000 x g for 10 minutes and collect serum. Dilute samples at least 4 fold into Sample Diluent 25BP and assay. Store un-diluted serum at -20°C or below. Avoid repeated freeze-thaw cycles.

### 11.3 Cell Culture Supernatants

Centrifuge cell culture media at 2,000 x g for 10 minutes to remove debris. Collect supernatants. Cell culture supernatant samples can be assayed without dilution. If needed dilute the samples into Sample Diluent NS and assay. Store un-diluted samples at -20°C or below. Avoid repeated freeze-thaw cycles.

## 12. PLATE PREPARATION

- The 96 well plate strips included with this kit are supplied ready to use. It is not necessary to rinse the plate prior to adding reagents.
- Unused plate strips should be immediately returned to the foil pouch containing the desiccant pack, resealed and stored at 4°C.
- For each assay performed, a minimum of two wells must be used as the zero control.
- For statistical reasons, we recommend each sample should be assayed with a minimum of two replicates (duplicates).
- Differences in well absorbance or “edge effects” have not been observed with this assay.

## 13. ASSAY PROCEDURE

- **Equilibrate all materials and prepared reagents to room temperature prior to use.**
- **It is recommended to assay all standards, controls and samples in duplicate.**
  - 13.1 Prepare all reagents, working standards, and samples as directed in the previous sections.
  - 13.2 Remove excess microplate strips from the plate frame, return them to the foil pouch containing the desiccant pack, reseal and return to 4°C storage.
  - 13.3 Add 50 µL of all sample or standard to appropriate wells.
  - 13.4 Add 50 µL of the Antibody Cocktail to each well.
  - 13.5 Seal the plate and incubate for 1 hour at room temperature on a plate shaker set to 400 rpm.
  - 13.6 Wash each well with 3 x 350 µL 1X Wash Buffer PT. Wash by aspirating or decanting from wells then dispensing 350 µL 1X Wash Buffer PT into each well. Complete removal of liquid at each step is essential for good performance. After the last wash invert the plate and blot it against clean paper towels to remove excess liquid.
  - 13.7 Add 100 µL of TMB Development Solution to each well and incubate for 10 minutes in the dark on a plate shaker set to 400 rpm.

*Given variability in laboratory environmental conditions, optimal incubation time may vary between 5 and 20 minutes.*  
*Note: The addition of Stop Solution will change the color from blue to yellow and enhance the signal intensity about 3X. To avoid signal saturation, proceed to the next step before the high concentration of the standard reaches a blue color of O.D.600 equal to 1.0.*
  - 13.8 Add 100 µL of Stop Solution to each well. Shake plate on a plate shaker for 1 minute to mix. Record the OD at 450 nm. This is an endpoint reading.

## ASSAY PROCEDURE

*Alternative to 13.7 – 13.8: Instead of the endpoint reading at 450 nm, record the development of TMB Substrate kinetically. Immediately after addition of TMB Development Solution begin recording the blue color development with elapsed time in the microplate reader prepared with the following settings:*

Mode:	Kinetic
Wavelength:	600 nm
Time:	up to 20 min
Interval:	20 sec - 1 min
Shaking:	Shake between readings

*Note that an endpoint reading can also be recorded at the completion of the kinetic read by adding 100  $\mu$ L Stop Solution to each well and recording the OD at 450 nm.*

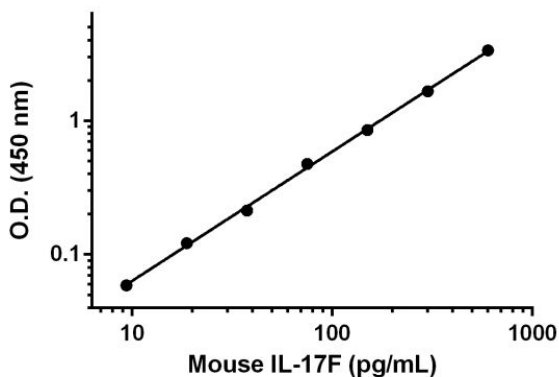
13.9 Analyze the data as described below.

## 14. CALCULATIONS

Subtract average zero standard from all readings. Average the duplicate readings of the positive control dilutions and plot against their concentrations. Draw the best smooth curve through these points to construct a standard curve. Most plate reader software or graphing software can plot these values and curve fit. A four parameter algorithm (4PL) usually provides the best fit, though other equations can be examined to see which provides the most accurate (e.g. linear, semi-log, log/log, 4 parameter logistic). Interpolate protein concentrations for unknown samples from the standard curve plotted. Samples producing signals greater than that of the highest standard should be further diluted and reanalyzed, then multiplying the concentration found by the appropriate dilution factor.

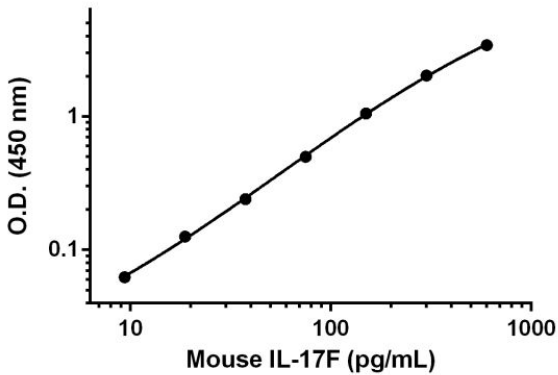
## 15. TYPICAL DATA

**TYPICAL STANDARD CURVE** – Data provided for **demonstration purposes only**. A new standard curve must be generated for each assay performed.



Standard Curve Measurements			
Conc. (pg/mL)	O.D. 450 nm		Mean O.D.
	1	2	
0	0.069	0.060	0.065
9.37	0.121	0.127	0.124
18.75	0.191	0.183	0.187
37.5	0.276	0.280	0.279
75	0.532	0.549	0.541
150	0.893	0.942	0.918
300	1.743	1.701	1.723
600	3.398	3.443	3.421

**Figure 1.** Example of IL-17F standard curve in Sample Diluent NS. The IL-17F standard curve was prepared as described in Section 10. Raw data values are shown in the table. Background-subtracted data values (mean +/- SD) are graphed.



<b>Standard Curve Measurements</b>			
<b>Conc. (pg/mL)</b>	<b>O.D. 450 nm</b>		<b>Mean O.D.</b>
	<b>1</b>	<b>2</b>	
0	0.098	0.103	0.101
9.37	0.163	0.163	0.163
18.75	0.227	0.226	0.227
37.5	0.328	0.353	0.341
75	0.607	0.588	0.598
150	1.185	1.123	1.154
300	2.143	2.097	2.120
600	3.548	3.490	3.519

**Figure 2.** Example of IL-17F standard curve in Sample Diluent 25BP. The IL-17F standard curve was prepared as described in Section 10. Raw data values are shown in the table. Background-subtracted data values (mean +/- SD) are graphed.

## 16. TYPICAL SAMPLE VALUES

### SENSITIVITY –

The calculated minimal detectable dose (MDD) is determined by calculating the mean of zero standard replicates and adding 2 standard deviations then extrapolating the corresponding concentration. The MDD is dependent on the Sample Diluent buffer used:

Sample Diluent Buffer	n=	Minimal Detectable Dose
Sample Diluent NS	19	0.1 pg/mL
Sample Diluent 25BP	33	0.4 pg/mL

### RECOVERY –

Three concentrations of Mouse recombinant IL-17F were spiked in duplicate to the indicated biological matrix to evaluate signal recovery in the working range of the assay.

Sample Type	Average % Recovery	Range (%)
100% Cell Culture Media	91.9	84.4 – 98.8
50% Mouse Serum	118.6	114.8 – 121.8
50% Mouse Plasma - Citrate	103.6	96.8 – 113.2
50% Mouse Plasma - EDTA	116.6	112.8 – 123.0
50% Mouse Plasma - Heparin	118.1	107.7 – 124.2

### LINEARITY OF DILUTION –

Linearity of dilution is determined based on interpolated values from the standard curve. Linearity of dilution defines a sample concentration interval in which interpolated target concentrations are directly proportional to sample dilution.

Native IL-17F was measured in the following biological samples in a 2-fold dilution series. Cell culture supernatant samples dilutions were made in Sample Diluent NS. Serum and plasma samples dilutions were made in Sample Diluent 25BP.

## DATA ANALYSIS

Dilution Factor	Interpolated value	100% Mouse Spleen PMA+IL-1a Supern.	25% Mouse Serum	25% Mouse Plasma (Citrate)	25% Mouse Plasma (EDTA)	50% Mouse Plasma (Heparin)
Undiluted	pg/mL	405.02	41.36	36.57	43.34	50.58
	<b>% Expected value</b>	<b>100</b>	<b>100</b>	<b>100</b>	<b>100</b>	<b>100</b>
2	pg/mL	201.72	20.97	19.94	20.68	29.78
	<b>% Expected value</b>	<b>99.6</b>	<b>101.4</b>	<b>109</b>	<b>95.5</b>	<b>117.8</b>
4	pg/mL	117.49	8.90	10.80	9.37	15.97
	<b>% Expected value</b>	<b>116</b>	<b>86.1</b>	<b>118.1</b>	<b>86.6</b>	<b>NL</b>
8	pg/mL	55.688	NA	NA	NA	4.984
	<b>% Expected value</b>	<b>110</b>	<b>NA</b>	<b>NA</b>	<b>NA</b>	<b>78.8</b>
16	pg/mL	22.441	NA	NA	NA	NA
	<b>% Expected value</b>	<b>88.7</b>	<b>NA</b>	<b>NA</b>	<b>NA</b>	<b>NA</b>

NA – Not Analyzed, measured O.D. values were lower than the O.D. value of the lowest standard; NL – Non-Linear

Mouse recombinant IL-17F was spiked into the following biological samples and diluted in a 2-fold dilution series in Sample Diluent 25BP.

Dilution Factor	Interpolated value	50% Mouse Serum	50% Mouse Plasma (Citrate)	50% Mouse Plasma (EDTA)	50% Mouse Plasma (Heparin)
Undiluted	pg/mL	498.81	405.38	533.09	413.87
	<b>% Expected value</b>	<b>100</b>	<b>100</b>	<b>100</b>	<b>100</b>
2	pg/mL	267.41	200.07	253.85	204.95
	<b>% Expected value</b>	<b>107.2</b>	<b>98.7</b>	<b>95.2</b>	<b>99</b>
4	pg/mL	118.53	110.11	120.81	103.88
	<b>% Expected value</b>	<b>95.1</b>	<b>108.7</b>	<b>90.7</b>	<b>100.4</b>
8	pg/mL	56.47	54.73	61.05	53.70
	<b>% Expected value</b>	<b>90.6</b>	<b>108</b>	<b>91.6</b>	<b>103.8</b>
16	pg/mL	25.96	22.13	28.47	28.23
	<b>% Expected value</b>	<b>83.3</b>	<b>87.4</b>	<b>85.5</b>	<b>109.2</b>
32	pg/mL	13.00	13.51	13.66	14.32
	<b>% Expected value</b>	<b>83.4</b>	<b>106.7</b>	<b>82.0</b>	<b>110.8</b>
64	pg/mL	7.82	7.64	6.77	7.24
	<b>% Expected value</b>	<b>100.4</b>	<b>120.6</b>	<b>81.3</b>	<b>112</b>

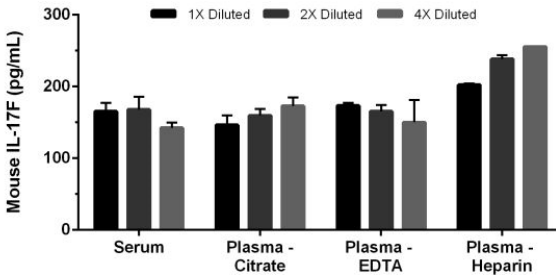
## PRECISION –

Mean coefficient of variations of interpolated values from 3 concentrations of Mouse plasma (citrate) within the working range of the assay.

	<b>Intra- Assay</b>	<b>Inter- Assay</b>
n=	5	3
CV (%)	8.4	4.5

**Serum and Plasma.** Pooled female mouse serum and plasma samples were measured in three different dilutions in duplicates for IL-17F concentrations using this kit. Means of interpolated sample values adjusted to sample dilution are shown in pg of IL-17F per mL of serum/plasma in the table below.

<b>Sample Type</b>	<b>Mean (pg/mL)</b>	<b>Range (pg/mL)</b>
Mouse Serum	159	142 - 168
Mouse Plasma - Citrate	160	146 - 173
Mouse Plasma - EDTA	163	150 - 173
Mouse Plasma - Heparin	232	202 - 256

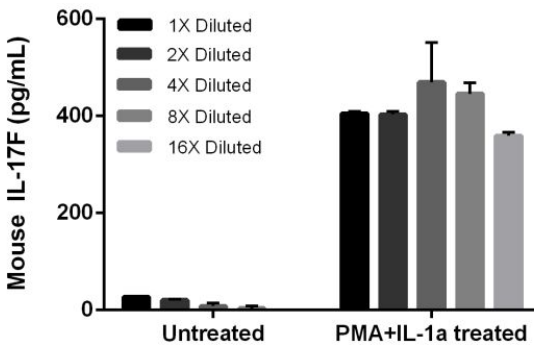


**Figure 3.** Interpolated concentrations of IL-17F in mouse serum and plasma samples. The concentrations of IL-17F were measured in duplicates, interpolated from the IL-17F standard curve and corrected for sample dilution. Note that 1X Diluted samples were pre-diluted to 25%. The interpolated, dilution factor-corrected values are plotted in pg of IL-17F per mL of neat sample (mean +/- SD, n=2).

## 17. ASSAY SPECIFICITY

This kit recognizes both native and recombinant mouse IL-17F protein in serum, plasma and cell culture supernatant samples only.

Urine, milk, saliva, and cell and tissue extract samples have not been tested with this kit.



**Figure 4.** PMA + IL-1 $\alpha$  treatment of mouse spleen induces secretion of IL-17F. Mouse spleen cells were cultured in the absence or presence of 10 ng/mL PMA + 10 ng/mL Mouse recombinant IL-1 $\alpha$  for 4 days. The cell culture supernatant samples were collected. The concentrations of IL-17F were measured in the diluted supernatants in duplicates, interpolated from the IL-17F standard curve and corrected for sample dilution. Note that 1X Diluted supernatant samples were neat. The interpolated, dilution factor-corrected values are plotted in pg of IL-17F per mL of neat sample (mean  $\pm$  SD, n=2).

## CROSS REACTIVITY

Recombinant mouse IL-17A homodimer and IL-17A/F heterodimer proteins were tested at 600, 300, 150, 75 and 37.5 pg/mL and assayed for cross reactivity. No cross-reactivity was observed.

### 18. SPECIES REACTIVITY

The kit is reactive with rat IL-17F protein. Other species reactivity was not determined.

Please contact our Technical Support team for more information

## 19. TROUBLESHOOTING

<b>Problem</b>	<b>Cause</b>	<b>Solution</b>
Poor standard curve	Inaccurate Pipetting	Check pipettes
	Improper standard dilution	Prior to opening, briefly spin the stock standard tube and dissolve the powder thoroughly by gentle mixing
Low Signal	Incubation times too brief	Ensure sufficient incubation times; increase to 2 or 3 hour standard/sample incubation
	Inadequate reagent volumes or improper dilution	Check pipettes and ensure correct preparation
	Incubation times with TMB too brief	Ensure sufficient incubation time until blue color develops prior addition of Stop solution
Large CV	Plate is insufficiently washed	Review manual for proper wash technique. If using a plate washer, check all ports for obstructions.
	Contaminated wash buffer	Prepare fresh wash buffer
Low sensitivity	Improper storage of the ELISA kit	Store your reconstituted standards at $-80^{\circ}\text{C}$ , all other assay components $4^{\circ}\text{C}$ . Keep TMB Development Solution protected from light.
Precipitate in Diluent	Precipitation and/or coagulation of components within the Diluent.	Precipitate can be removed by gently warming the Diluent to $37^{\circ}\text{C}$ .

20. NOTES

## **Technical Support**

Copyright © 2021 Abcam, All Rights Reserved. The Abcam logo is a registered trademark. All information / detail is correct at time of going to print.

**For all technical or commercial enquiries please go to:**

[www.abcam.com/contactus](http://www.abcam.com/contactus)

[www.abcam.cn/contactus](http://www.abcam.cn/contactus) (China)

[www.abcam.co.jp/contactus](http://www.abcam.co.jp/contactus) (Japan)