

Version 2a Last updated 17 January 2024

ab213765 – Human Complement H ELISA Kit

For the quantitative detection of Human Complement H/CFH in cell culture supernatants, serum, plasma (heparin, EDTA) and urine.

This product is for research use only and is not intended for diagnostic use.

Table of Contents

1. Overview	1
2. Protocol Summary	2
3. Precautions	3
4. Storage and Stability	3
5. Limitations	4
6. Materials Supplied	4
7. Materials Required, Not Supplied	5
8. Technical Hints	6
9. Reagent Preparation	7
10. Sample Preparation	9
11. Assay Procedure	10
12. Calculations	12
13. Typical data	13
14. Typical sample values	14
15. Troubleshooting	15
16. Notes	16

1. Overview

The Human Complement H Enzyme-Linked Immunosorbent Assay (ELISA) kit (ab213765) is designed for the quantitative measurement Human Complement H/CFH in cell culture supernatants, serum, plasma (heparin, EDTA) and urine.

The kit is based on standard sandwich enzyme-linked immunosorbent assay technology. A monoclonal antibody from mouse specific for Complement H/CFH has been pre-coated onto 96-well plates. Standards and test samples are added to the wells, a biotinylated detection polyclonal antibody from goat specific for Complement H/CFH is added subsequently and then followed by washing with 1X Wash Buffer. Avidin-Biotin-Peroxidase Complex is added and unbound conjugates are washed away with 1X Wash Buffer. HRP substrate TMB Color Developing Agent is used to visualize HRP enzymatic reaction. TMB is catalyzed by HRP to produce a blue color product that changed into yellow after adding acidic TMB Stop Solution. The density of yellow is proportional to the Human Complement H/CFH amount of sample captured in plate.

Complement factor H (CFH), originally known as beta-1H globulin, is a serum glycoprotein that regulates the function of the alternative complement pathway in fluid phase and on cellular surfaces. It binds to C3b, accelerates the decay of the alternative pathway convertase C3bBb, and also acts as a cofactor for complement factor I, another C3b inhibitor. The CFH gene is located on chromosome 1q32-q32.1 within a cluster of genes encoding the regulatory complement components of the activation of C3 (RCA for 'regulators of complement activation'). This gene cluster includes decay accelerating factor (DAF), C4-binding protein (C4BPA and C4BPB), and the factor H-related genes CFHR1, CFHR2, CFHR3, CFHR4, and CFHR5, among others. The gene family has arisen by multiple duplication events.

2. Protocol Summary

Prepare all reagents, samples, and standards as instructed



Add 100 μ L standard or sample to appropriate wells

Incubate at 37°C for 90 minutes



Discard plate content. Do not wash.

Add 100 μ L biotinylated Antibody into all wells

Incubate at 37°C for 60 minutes



Wash each well three times with 300 μ L 1X Wash Buffer



Add 100 μ L ABC working solution

Incubate at 37°C for 30 minutes



Wash each well five times with 300 μ L 1X Wash Buffer

Add 90 μ L of prepared TMB Color Developing Agent

Incubate at 37°C in dark for 20-25 minutes



Add 100 μ L TMB Stop Solution and read OD at 450 nm within 30 minutes

3. Precautions

Please read these instructions carefully prior to beginning the assay.

- All kit components have been formulated and quality control tested to function successfully as a kit.
- We understand that, occasionally, experimental protocols might need to be modified to meet unique experimental circumstances. However, we cannot guarantee the performance of the product outside the conditions detailed in this protocol booklet.
- Reagents should be treated as possible mutagens and should be handled with care and disposed of properly. Please review the Safety Datasheet (SDS) provided with the product for information on the specific components.
- Observe good laboratory practices. Gloves, lab coat, and protective eyewear should always be worn. Never pipet by mouth. Do not eat, drink or smoke in the laboratory areas.
- All biological materials should be treated as potentially hazardous and handled as such. They should be disposed of in accordance with established safety procedures.

4. Storage and Stability

Store kit at -20°C immediately upon receipt

Refer to list of materials supplied for storage conditions of individual components. Observe the storage conditions for individual prepared components in the Materials Supplied section.

Aliquot components in working volumes before storing at the recommended temperature.

5. Limitations

- Assay kit intended for research use only. Not for use in diagnostic procedures.
- Do not mix or substitute reagents or materials from other kit lots or vendors. Kits are QC tested as a set of components and performance cannot be guaranteed if utilized separately or substituted.

6. Materials Supplied

Item	Quantity	Storage Condition (Before prep)	Storage Condition (After prep)
Anti-Human CFH coated Microplate (12 x 8 wells)	1 x 96 well plate	-20°C	-20°C
Lyophilized recombinant human CFH standard	2 x 100 ng	-20°C	-20°C
Biotinylated anti- human CFH antibody	100 µL	-20°C	-20°C
Avidin-Biotin-Peroxidase Complex (ABC)	100 µL	-20°C	-20°C
Sample diluent buffer	30 mL	-20°C	-20°C
Antibody diluent buffer	12 mL	-20°C	-20°C
ABC diluent buffer	12 mL	-20°C	-20°C
TMB Color Developing Agent	10 mL	-20°C	-20°C
TMB Stop Solution	10 mL	-20°C	-20°C
Adhesive Plate Seal	4	-20°C	-20°C
Wash Buffer (25X)	20 mL	-20°C	-20°C

7. Materials Required, Not Supplied

These materials are not included in the kit, but will be required to successfully perform this assay:

- Microplate reader capable of measuring absorbance at 450 nm.
- Automated plate washer.
- Multi- and single-channel pipettes and pipette tips.
- Clean tubes and Eppendorf tubes.
- 500 mL graduated cylinders
- Deionized or distilled water.

8. Technical Hints

- Samples generating values higher than the highest standard should be further diluted in the appropriate sample dilution buffers.
- Avoid foaming or bubbles when mixing or reconstituting components.
- Avoid cross contamination of samples or reagents by changing tips between sample, standard and reagent additions.
- Ensure plates are properly sealed or covered during incubation steps.
- Don't let 96-well plate dry, for dry plate will inactivate active components on plate.
- Complete removal of all solutions and buffers during wash steps is necessary to minimize background.
- All samples should be mixed thoroughly and gently.
- Avoid multiple freeze/thaw of samples.
- When generating positive control samples, it is advisable to change pipette tips after each step.
- Before using the Kit, spin tubes and bring down all components to the bottom of tubes.
- In order to avoid marginal effect of plate incubation due to temperature difference (reaction may be stronger in the marginal wells), it is suggested that the diluted ABC and TMB Color Developing Agent solution will be pre-warmed in 37°C for 30 minutes before using.
- **To avoid high background always add samples or standards to the well before the addition of the antibody cocktail.**
- **This kit is sold based on number of tests. A 'test' simply refers to a single assay well. The number of wells that contain sample, control or standard will vary by product. Review the protocol completely to confirm this kit meets your requirements. Please contact our Technical Support staff with any questions.**

9. Reagent Preparation

- Equilibrate all reagents to room temperature (18-25°C) prior to use. The kit contains enough reagents for 96 wells.
- Prepare only as much reagent as is needed on the day of the experiment.

9.1 Anti-Human CFH coated Microplate (12 x 8 wells)

One plate of 96 wells. Ready to use. Store at -20°C.

9.2 Lyophilized recombinant human CFH standard

- Complement H/CFH standard solution should be prepared no more than 2 hours prior to the experiment. Two tubes of Complement H/CFH standard (100 ng per tube) are included in each kit. Use one tube for each experiment.

9.2.1 100 ng/mL of Human Complement H/CFH standard solution: Add 1mL sample diluent buffer into one tube, keep the tube at room temperature for 10 minutes and mix thoroughly.

9.2.2 50 ng/mL → 1.5625 ng/mL of Human Complement H/CFH standard solutions: Label 6 Eppendorf tubes with 50 ng/mL, 25 ng/mL, 12.5 ng/mL, 6.25 ng/mL, 3.125 ng/mL, 1.5625 ng/mL respectively. Aliquot 300 µL of the sample diluent buffer into each tube. Add 300 µL of the above 100 ng/mL Complement H/CFH standard solution into 1st tube and mix. Transfer 300 µL from 1st tube to 2nd tube and mix. Transfer 300 µL from 2nd tube to 3rd tube and mix, and so on.

Δ Note: The standard solutions are best used within 2 hours. The 100 ng/mL standard solution should be stored at 4°C for up to 12 hours, or at -20°C for up to 48 hours. Avoid repeated freeze-thaw cycles

9.3 Biotinylated anti- human CFH antibody

- The solution should be prepared no more than 2 hours prior to the experiment.
- 9.3.1 The total volume should be: 100 µL /well x (the number of wells). (Allowing 100 µL – 200 µL more than total volume)
- 9.3.2 Biotinylated anti-Human Complement H/CFH antibody should be diluted in 1:100 with the antibody diluent buffer and mixed thoroughly. (i.e. Add 1 µL Biotinylated Anti-Human Complement H/CFH antibody to 99 µL antibody diluent buffer.)

9.4 Avidin-Biotin-Peroxidase Complex (ABC)

Before use, briefly centrifuge the tubes in case any of the contents are trapped in the lid or sticking to the tube walls.

The solution should be prepared no more than 1 hour prior to the experiment.

9.4.1 The total volume should be: 100 μ L/well x (the number of wells). (Allowing 100 μ L - 200 μ L more than total volume)

9.4.2 Avidin- Biotin-Peroxidase Complex (ABC) should be diluted in 1:100 with the ABC dilution buffer and mixed thoroughly. (i.e. Add 1 μ L ABC to 99 μ L ABC. diluent buffer.)

9.5 1X Wash Buffer

Prepare 500 mL of working 1X Wash Buffer by diluting 20 ml of the supplied Wash Buffer (25X) with 480 ml of deionized or distilled water. If crystals have formed in the concentrate, warm to room temperature and mix it gently until crystals have completely dissolved.

9.6 Sample diluent buffer

30 mL. Ready to use. Store at -20°C .

9.7 Antibody diluent buffer

12 mL. Ready to use. Store at -20°C .

9.8 ABC diluent buffer

12 mL. Ready to use. Store at -20°C .

9.9 TMB Color Developing Agent

10 mL. Ready to use. Store at -20°C .

9.10 TMB Stop Solution

10 mL. Ready to use. Store at -20°C .

10. Sample Preparation

The user needs to estimate the concentration of the target protein in the sample and select a proper dilution factor so that the diluted target protein concentration falls near the middle of the linear regime in the standard curve. Dilute the sample using the provided diluent buffer. The following is a guideline for sample dilution. Several trials may be necessary in practice. The sample must be well mixed with the diluents buffer.

- High target protein concentration (1000 ng/mL-10000 ng/mL). The working dilution is 1:100. i.e. Add 1 μ L sample into 99 μ L sample diluent buffer.
- Medium target protein concentration (100 ng/mL-1000 ng/mL). The working dilution is 1:10. i.e. Add 10 μ L sample into 90 μ L sample diluent buffer.
- Low target protein concentration (1.56 ng/mL-100 ng/mL). The working dilution is 1:2. i.e. Add 50 μ L sample to 50 μ L sample diluent buffer.
- Very Low target protein concentration (0 ng/mL-1.56 ng/mL). No dilution necessary, or the working dilution is 1:2.

11. Assay Procedure

- It is recommended to assay all standards, controls and samples in duplicate.
 - The ABC working solution and TMB Color Developing Agent must be kept warm at 37°C for 30 minutes before use. When diluting samples and reagents, they must be mixed completely and evenly. Standard Complement H/CFH detection curve should be prepared for each experiment. The user will decide sample dilution fold by crude estimation of Complement H/CFH amount in samples.
- 11.1 Aliquot 100 μ L per well of the 100 ng/mL, 50 ng/mL, 25 ng/mL, 12.5 ng/mL, 6.25 ng/mL, 3.125 ng/mL, 1.5625 ng/mL Human Complement H/CFH standard solutions into the pre-coated 96-well plate. Add 100 μ L of the sample diluent buffer into the control well (Zero well). Add 100 μ L of each properly diluted sample of Human cell culture supernatants, serum, plasma (heparin, EDTA) or urine to each empty well. See "Sample Dilution Guideline" above for details. It is recommended that each Human Complement H/CFH standard solution and each sample be measured in duplicate.
 - 11.2 Seal the plate with a new adhesive cover provided and incubate at 37°C for 90 minutes.
 - 11.3 Remove the cover, discard plate content, and blot the plate onto paper towels or other absorbent material. Do NOT let the wells completely dry at any time.
 - 11.4 Add 100 μ L of biotinylated anti-Human Complement H/CFH antibody working solution into each well, seal the plate with a new adhesive cover provided and incubate at 37°C for 60 minutes.
 - 11.5 Wash plate 3 times with 1X Wash Buffer, and each time let wash buffer stay in the wells for 1 minute. Discard the wash buffer and blot the plate onto paper towels or other absorbent material. (Plate Washing Method: Discard the solution in the plate without touching the side walls. Blot the plate onto paper towels or other absorbent material. Soak each well with at least 300 μ L 1X Wash Buffer for 1~2 minutes. Repeat this process two additional times for a total of THREE washes. Note: For automated washing, aspirate all wells and wash THREE times with 1X Wash Buffer, overfilling wells with 1X

- Wash Buffer. Blot the plate onto paper towels or other absorbent material.)
- 11.6 Add 100 μ L of prepared ABC working solution into each well, seal the plate with a new adhesive cover provided and incubate at 37°C for 30 minutes.
 - 11.7 Wash plate 5 times with 1X Wash Buffer, and each time let wash buffer stay in the wells for 1-2 minutes. Discard the wash buffer and blot the plate onto paper towels or other absorbent material. (See Step 11.5 for plate washing method.)
 - 11.8 Add 90 μ L of prepared TMB Color Developing Agent into each well, seal the plate with a new adhesive cover and incubate at 37°C in dark for 20-25 minutes

Δ Note: For reference only, the optimal incubation time should be determined by end user. And the shades of blue can be seen in the wells with the four most concentrated Human Complement H/CFH standard solutions; the other wells show no obvious color.

- 11.9 Add 100 μ L of prepared TMB Stop Solution into each well. The color changes into yellow immediately.
- 11.10 Read the O.D. absorbance at 450 nm in a microplate reader within 30 minutes after adding the TMB Stop Solution.

12. Calculations

The standard curve can be plotted as the relative O.D.450 of each standard solution (Y) vs. the respective concentration of the standard solution (X). The Human Complement H/CFH concentration of the samples can be interpolated from the standard curve

(the relative O.D.450) = (the O.D.450 of each well) – (the O.D.450 of Zero well).

Δ Note: if the samples measured were diluted, multiply the dilution factor to the concentrations from interpolation to obtain the concentration before dilution.

13. Typical data

Typical standard curve – Data provided for demonstration purposes only. A new standard curve must be generated for each assay performed.

Sample	Human Complement H (ng/mL)	O.D.
1	0	0.054
2	1.56	0.135
3	3.12	0.233
4	6.25	0.445
5	12.5	0.857
6	25	1.343
7	50	1.813
8	100	2.117

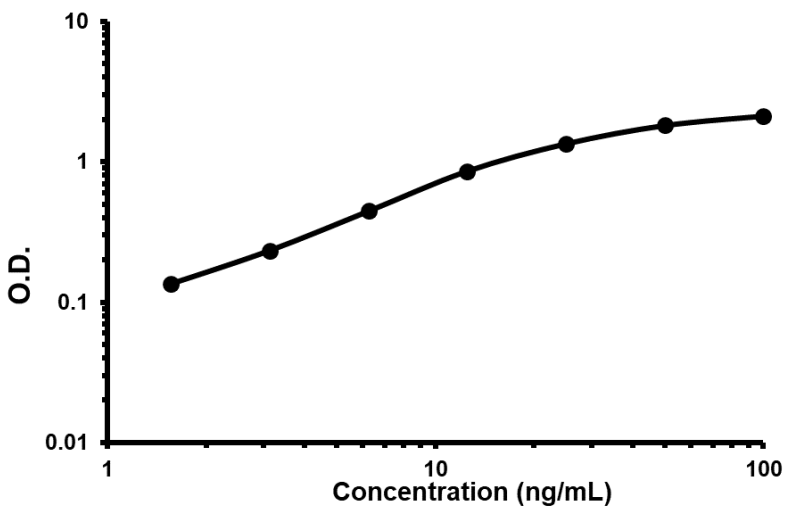


Figure 1. Human Complement H ELISA Kit (ab213765) Standard Curve

14. Typical sample values

SENSITIVITY –

The biological sensitivity of the assay is <50 pg/mL.

PRECISION –

Intra-assay precision: (Precision within an assay) Three samples of known concentration were tested on one plate to assess intra-assay precision.

Sample	Number of measures	Mean (ng/mL)	Standard Deviation	CV%
1	16	3.203	0.234	7.3
2	16	13.518	0.754	5.8
3	16	53.844	3.823	7.1

Inter-assay precision: (Precision between assays) Three samples of known concentration were tested in separate assays to assess inter-assay precision.

Sample	Number of assays	Mean (ng/mL)	Standard Deviation	CV%
1	24	3.406	0.303	8.9
2	24	12.935	0.905	7
3	24	57.149	4.972	8.7

Specificity

Natural and recombinant Human Complement H/CFH.

There is no detectable cross-reactivity with other relevant proteins.

Problem	Cause	Solution
Poor standard curve	Inaccurate Pipetting	Check Pipettes
	Improper standard dilution	Prior to opening, briefly spin the stock standard tube and dissolve the powder thoroughly by gentle mixing
Low Signal	Incubation times too brief	Ensure sufficient incubation times standard/sample incubation
	Inadequate reagent volumes or improper dilution	Check Pipettes and ensure correct preparation
	Incubation times with TMB Color Developing Agent too brief	Ensure sufficient incubation time until blue color develops prior addition of TMB Stop Solution
Large CV	Plate is insufficiently washed	Review manual for proper wash technique. If using a plate washer, check all ports for obstructions.
	Contaminated wash buffer	Prepare fresh wash buffer
Low sensitivity	Improper storage of the ELISA kit	All components 4°C. Keep TMB Color Developing Agent substrate solution protected from light.

15. Troubleshooting

16. Notes

Technical Support

Copyright © 2024 Abcam. All Rights Reserved. The Abcam logo is a registered trademark. All information / detail is correct at time of going to print.

For all technical or commercial enquiries please go to:

www.abcam.com/contactus

www.abcam.cn/contactus (China)

www.abcam.co.jp/contactus (Japan)