

Version 3a Last updated 17 January 2024

ab213772 – Human CYR61/CCN1 ELISA Kit

For the quantitative detection of Human CYR61/CCN1 in cell culture supernatants, serum, plasma (heparin, EDTA), saliva, urine and human milk.

This product is for research use only and is not intended for diagnostic use.

Table of Contents

1. Overview	1
2. Protocol Summary	2
3. Precautions	3
4. Storage and Stability	3
5. Limitations	4
6. Materials Supplied	4
7. Materials Required, Not Supplied	5
8. Technical Hints	6
9. Reagent Preparation	7
10. Standard Preparation	9
11. Sample Preparation	10
12. Assay Procedure	12
13. Calculations	14
14. Typical data	15
15. Typical sample values	16
16. Troubleshooting	17
17. Notes	18

1. Overview

The Human CYR61/CCN1 Enzyme-Linked Immunosorbent Assay (ELISA) kit (ab213772) is designed for the quantitative measurement of Human CYR61 in cell culture supernatants, serum, plasma (heparin, EDTA), saliva, urine and human milk.

The ELISA kit is based on standard sandwich enzyme-linked immunosorbent assay technology. A monoclonal antibody from mouse specific for CYR61/CCN1 has been pre-coated onto 96-well plates. Standards (Expression system for standard: CHO; Immunogen sequence: A22-D381) and test samples are added to the wells, a biotinylated detection polyclonal antibody from goat specific for CYR61/CCN1 is added subsequently and then followed by washing with 1X Wash Buffer. Avidin-Biotin-Peroxidase Complex is added and unbound conjugates are washed away with 1X Wash Buffer. HRP substrate TMB Color Developing Agent is used to visualize HRP enzymatic reaction. TMB is catalyzed by HRP to produce a blue color product that changed into yellow after adding acidic TMB Stop Solution. The density of yellow is proportional to the Human CYR61/CCN1 amount of sample captured in plate.

Cysteine-rich angiogenic inducer 61 (CYR61) or CCN family member 1 (CCN1), is a matricellular protein that in humans is encoded by the CYR61 gene. This gene is mapped to 1p22.3. CYR61 is capable of regulating a broad range of cellular activities, including cell adhesion, migration, proliferation, differentiation, apoptosis and senescence through interaction with cell surface integrin receptors and heparan sulfate proteoglycans. During embryonic development CYR61 is critical for cardiac septal morphogenesis, blood vessel formation in placenta and vascular integrity. In adulthood CYR61 plays important roles in inflammation and tissue repair and is associated with diseases related to chronic inflammation, including rheumatoid arthritis, atherosclerosis, diabetes related nephropathy and retinopathy, and many different forms of cancers.

2. Protocol Summary

Prepare all reagents, samples, and standards as instructed



Add 100 μ L standard or sample to appropriate wells

Incubate at 37°C for 90 minutes



Discard plate content. Do not wash.

Add 100 μ L biotinylated Antibody in to all wells

Incubate at 37°C for 60 minutes



Wash each well three times with 300 μ L 1X Wash Buffer



Add 100 μ L ABC working solution

Incubate at 37°C for 30 minutes



Wash each well five times with 300 μ L 1X Wash Buffer

Add 90 μ L of prepared TMB Color Developing Agent

Incubate at 37°C in dark for 15-25 minutes



Add 100 μ L TMB Stop Solution and read OD at 450 nm within 30 minutes

3. Precautions

Please read these instructions carefully prior to beginning the ELISA assay.

- All kit components have been formulated and quality control tested to function successfully as a kit.
- We understand that, occasionally, experimental protocols might need to be modified to meet unique experimental circumstances. However, we cannot guarantee the performance of the product outside the conditions detailed in this protocol booklet.
- Reagents should be treated as possible mutagens and should be handled with care and disposed of properly. Please review the Safety Datasheet (SDS) provided with the product for information on the specific components.
- Observe good laboratory practices. Gloves, lab coat, and protective eyewear should always be worn. Never pipette by mouth. Do not eat, drink or smoke in the laboratory areas.
- All biological materials should be treated as potentially hazardous and handled as such. They should be disposed of in accordance with established safety procedures.

4. Storage and Stability

Store ELISA kit at -20°C immediately upon receipt.

Refer to list of materials supplied for storage conditions of individual components. Observe the storage conditions for individual prepared components in the Materials Supplied section.

Aliquot components in working volumes before storing at the recommended temperature.

5. Limitations

- ELISA kit intended for research use only. Not for use in diagnostic procedures.
- Do not mix or substitute reagents or materials from other kit lots or vendors. Kits are QC tested as a set of components and performance cannot be guaranteed if utilized separately or substituted.

6. Materials Supplied

Item	Quantity	Storage Condition (Before prep)	Storage Condition (After prep)
Anti-Human CYR61/CCN1 coated Microplate (12 x 8 wells)	1 x 96 well plate	-20°C	-20°C
Lyophilized recombinant Human CYR61/CCN1 standard	2 x 1 vial	-20°C	-20°C
Biotinylated anti- Human CYR61/CCN1 antibody	100 µL	-20°C	-20°C
Avidin-Biotin-Peroxidase Complex (ABC)	100 µL	-20°C	-20°C
Sample diluent buffer	30 mL	-20°C	-20°C
Antibody diluent buffer	12 mL	-20°C	-20°C
ABC diluent buffer	12 mL	-20°C	-20°C
TMB Color Developing Agent	10 mL	-20°C	-20°C
TMB Stop Solution	10 mL	-20°C	-20°C
Adhesive Plate Seal	4	-20°C	-20°C
25X Wash Buffer	20 mL	-20°C	-20°C

7. Materials Required, Not Supplied

These materials are not included in the kit, but will be required to successfully perform this assay:

- Microplate reader capable of measuring absorbance at 450 nm.
- Automated plate washer.
- Multi- and single-channel pipettes.
- Clean tubes and Eppendorf tubes.

8. Technical Hints

- Samples generating values higher than the highest standard should be further diluted in the appropriate sample dilution buffers.
- Avoid foaming or bubbles when mixing or reconstituting components.
- Avoid cross contamination of samples or reagents by changing tips between sample, standard and reagent additions.
- Ensure plates are properly sealed or covered during incubation steps.
- Don't let the 96-well plate dry, for a dry plate will inactivate active components on plate.
- Complete removal of all solutions and buffers during wash steps is necessary to minimize background.
- All samples should be mixed thoroughly and gently.
- Avoid multiple freeze/thaw of samples.
- When generating positive control samples, it is advisable to change pipette tips after each step.
- Before using the kit, spin tubes and bring down all components to the bottom of tubes.
- In order to avoid marginal effect of plate incubation due to temperature difference (reaction may be stronger in the marginal wells), it is suggested that the diluted ABC and TMB Color Developing Agent solution will be pre-warmed in 37°C for 30 minutes before using.
- **To avoid high background always add samples or standards to the well before the addition of the antibody cocktail.**
- **This kit is sold based on number of tests. A 'test' simply refers to a single assay well. The number of wells that contain sample, control or standard will vary by product. Review the protocol completely to confirm this kit meets your requirements. Please contact our Technical Support staff with any questions.**

9. Reagent Preparation

- Equilibrate all reagents to room temperature (18-25°C) prior to use. The kit contains enough reagents for 96 wells.
- Prepare only as much reagent as is needed on the day of the experiment.

9.1 Anti-human CYR61/CCN1 coated Microplate (12 x 8 wells)

One plate of 96 wells. Ready to use. Store at -20°C.

9.2 Lyophilized recombinant Human CYR61/CCN1 standard (2 x 10 ng)

- 9.2.1 CYR61 standard solution should be prepared no more than 2 hours prior to the experiment. Two tubes of CYR61 standard (2 x 10 ng) are included in each kit. Use one tube for each experiment.
- 9.2.2 Add 1 mL sample diluent buffer into one tube to create 10,000 pg/mL of Human CYR61/CCN1 stock solution. Keep the tube at room temperature for 10 minutes and mix thoroughly.

9.3 Biotinylated anti- Human CYR61/CCN1 antibody

The solution should be prepared no more than 2 hours prior to the experiment.

- 9.3.1 The total volume should be: 100 μ L/well x (the number of wells). (Allowing 100 μ L – 200 μ L more than total volume)
- 9.3.2 Biotinylated anti-Human CYR61 antibody should be diluted in 1:100 with the antibody diluent buffer and mixed thoroughly. (i.e. Add 1 μ L Biotinylated anti-Human CYR61 antibody to 99 μ L antibody diluent buffer.)

9.4 Avidin-Biotin-Peroxidase Complex (ABC)

Before use, briefly centrifuge the tubes in case any of the contents are trapped in the lid or sticking to the tube walls.

The solution should be prepared no more than 1 hour prior to the experiment.

- 9.4.1 The total volume should be: 100 μ L/well x (the number of wells). (Allowing 100 μ L - 200 μ L more than total volume)
- 9.4.2 Avidin- Biotin-Peroxidase Complex (ABC) should be diluted in 1:100 with the ABC dilution buffer and mixed thoroughly. (i.e. Add 1 μ L ABC to 99 μ L ABC diluent buffer.)

9.5 1X Wash Buffer

Prepare 500 mL of working 1X Wash Buffer by diluting 20 ml of the supplied Wash Buffer (25X) with 480 ml of deionized or distilled water. If crystals have formed in the concentrate, warm to room temperature and mix it gently until crystals have completely dissolved.

9.6 Sample diluent buffer

30 mL. Ready to use. Store at -20°C.

9.7 Antibody diluent buffer

12 mL. Ready to use. Store at -20°C.

9.8 ABC diluent buffer

12 mL. Ready to use. Store at -20°C.

9.9 TMB Color Developing Agent

10 mL. Ready to use. Store at -20°C.

9.10 TMB Stop Solution

10 mL. Ready to use. Store at -20°C.

10. Standard Preparation

- 10.1 Prepare a 2,000 pg/mL CYR61/CCN1 solution by adding 200 μ L of the above 10,000 pg/mL CYR61/CCN1 stock solution into a tube with 800 μ L sample diluent buffer and mix thoroughly.
- 10.2 To prepare standards, label 6 Eppendorf tubes with 1,000 pg/mL, 500 pg/mL, 250 pg/mL, 125 pg/mL, 62.5 pg/mL and 31.25 pg/mL respectively.
- 10.3 Aliquot 300 μ L of the sample diluent buffer into each tube.
- 10.4 Add 300 μ L of the above 2,000 pg/mL CYR61 solution into 2nd tube and mix.
- 10.5 Transfer 300 μ L from 2nd tube to 3rd tube and mix. Transfer 300 μ L from 3rd tube to 4th tube and mix, and so on.

Tube #	Volume to dilute	Volume of diluent	Concentration (pg/mL)
1	200 μ L of 10,000 pg/mL stock solution	800 μ L	2,000
2	300 μ L of 2,000 pg/mL stock solution	300 μ L	1,000
3	300 μ L of tube #2	300 μ L	500
4	300 μ L of tube #3	300 μ L	250
5	300 μ L of tube #4	300 μ L	125
6	300 μ L of tube #5	300 μ L	62.5
7	300 μ L of tube #6	300 μ L	31.25

Δ Note: The standard solutions are best used within 2 hours. The 10,000 pg/mL standard solution should be stored at 4°C for up to 12 hours, or at -20°C for up to 48 hours. Avoid repeated freeze-thaw cycles.

11. Sample Preparation

Store samples to be assayed within 24 hours at 4°C. For long-term storage, aliquot and freeze samples at -20°C. Avoid repeated freeze-thaw cycles.

- Serum: Allow the serum to clot in a serum separator tube (about 4 hours) at room temperature. Centrifuge at approximately 1,000 x g for 15 minutes. Analyze the serum immediately or aliquot and store samples at -20°C.
- Urine: Aseptically collect the first urine of the day; micturate directly into a sterile container. Remove particular impurities by centrifugation, assay immediately or aliquot and store samples at -20°C.
- Cell culture supernatant: Remove particulates by centrifugation, assay immediately or aliquot and store samples at -20°C.
- Plasma: Collect plasma using heparin or EDTA as an anticoagulant. Centrifuge for 15 minutes at 1,000 x g within 30 minutes of collection. Assay immediately or aliquot and store samples at -20°C.
- Saliva: Collect saliva using a collection device without any protein binding or filtering capabilities such as a Salivette or aliquot and store samples at -20°C.
- Human milk: Centrifuge for 15 minutes at 1,500 x g at 4°C. Collect the aqueous fraction and repeat this process 3 times. Filter through a 0.2 µm filter and assay immediately or aliquot and store samples at -80°C.

It is recommended to estimate the concentration of the target protein in the sample and select a proper dilution factor so that the diluted target protein concentration falls near the middle of the linear regime in the standard curve. Dilute the sample using the provided diluent buffer. The following is a guideline for sample dilution. Several trials may be necessary in practice. The sample must be well mixed with the diluents buffer.

- High target protein concentration (20,000 pg/mL-200,000 pg/mL). The working dilution is 1:100. i.e. Add 1 μ L sample into 99 μ L sample diluent buffer.
- Medium target protein concentration (2,000 pg/mL-20,000 pg/mL). The working dilution is 1:10. i.e. Add 10 μ L sample into 90 μ L sample diluent buffer.
- Low target protein concentration (31.2 pg/mL-2,000 pg/mL). The working dilution is 1:2. i.e. Add 50 μ L sample to 50 μ L sample diluent buffer.
- Very Low target protein concentration (0 pg/mL-31.2 pg/mL). No dilution necessary, or the working dilution is 1:2.

12. Assay Procedure

- It is recommended to assay all standards, controls and samples in duplicate.
 - The ABC working solution and TMB Color Developing Agent must be kept warm at 37°C for 30 minutes before use. When diluting samples and reagents, they must be mixed completely and evenly. Standard CYR61 detection curve should be prepared for each experiment. The user will decide sample dilution fold by crude estimation of CYR61 amount in samples.
- 12.1** Aliquot 100 μ L per well of the 2,000 pg/mL, 1,000 pg/mL, 500 pg/mL, 250 pg/mL, 125 pg/mL, 62.5 pg/mL and 31.25 pg/mL Human CYR61/CCN1 standard solutions into the pre-coated 96-well plate.
 - 12.2** Add 100 μ L of the sample diluent buffer into the control well (Zero well).
 - 12.3** Add 100 μ L of each properly diluted sample of Human cell culture supernatants, serum, plasma (heparin, EDTA), saliva, urine or human milk to each empty well. See “Sample Preparation” above for details. It is recommended that each Human CYR61/CCN1 standard solution and each sample be measured in duplicate.
 - 12.4** Seal the plate with a new adhesive cover provided and incubate at 37°C for 90 minutes.
 - 12.5** Remove the cover, discard plate content, and blot the plate onto paper towels or other absorbent material. Do NOT let the wells completely dry at any time.
 - 12.6** Add 100 μ L of biotinylated anti-Human CYR61/CCN1 antibody working solution into each well, seal the plate with a new adhesive cover provided and incubate at 37°C for 60 minutes.
 - 12.7** Wash plate 3 times with 1X Wash Buffer and each time let wash buffer stay in the wells for 1 minute. Discard the wash buffer and blot the plate onto paper towels or other absorbent material. (Plate Washing Method: Discard the solution in the plate without touching the side walls. Blot the plate onto paper towels or other absorbent material. Soak each well with at least 300 μ L 1X Wash Buffer for 1~2 minutes. Repeat this process two additional times for a total of three washes. Note: For automated washing, aspirate all wells and wash three times with 1X Wash Buffer, overfilling wells with 1X

Wash Buffer. Blot the plate onto paper towels or other absorbent material.)

- 12.8** Add 100 μ L of prepared ABC working solution into each well, seal the plate with a new adhesive cover provided and incubate at 37°C for 30 minutes.
- 12.9** Wash plate 5 times with 1X Wash Buffer and each time let wash buffer stay in the wells for 1-2 minutes. Discard the wash buffer and blot the plate onto paper towels or other absorbent material. (See Step 12.7 for plate washing method.)
- 12.10** Add 90 μ L of prepared TMB Color Developing Agent into each well, seal the plate with a new adhesive cover and incubate at 37°C in dark for 15-20 minutes.

Δ Note: For reference only, the optimal incubation time should be determined by end user. And the shades of blue can be seen in the wells with the four most concentrated Human CYR61/CCN1 standard solutions; the other wells show no obvious color.

- 12.11** Add 100 μ L of prepared TMB Stop Solution into each well. The color changes into yellow immediately.
- 12.12** Read the O.D. absorbance at 450 nm in a microplate reader within 30 minutes after adding the TMB Stop Solution.

13. Calculations

The standard curve can be plotted as the relative O.D.450 of each standard solution (Y) vs. the respective concentration of the standard solution (X). The Human CYR61 concentration of the samples can be interpolated from the standard curve.

(the relative O.D.450) = (the O.D.450 of each well) – (the O.D.450 of Zero well).

Δ Note: if the samples measured were diluted, multiply the dilution factor to the concentrations from interpolation to obtain the concentration before dilution.

14. Typical data

Typical standard curve – Data provided for demonstration purposes only. A new standard curve must be generated for each assay performed.

Sample	Human CYR61 (pg/mL)	O.D.
1	0	0.018
2	31.2	0.073
3	62.5	0.132
4	125	0.252
5	250	0.482
6	500	0.921
7	1,000	1.579
8	2,000	2.288

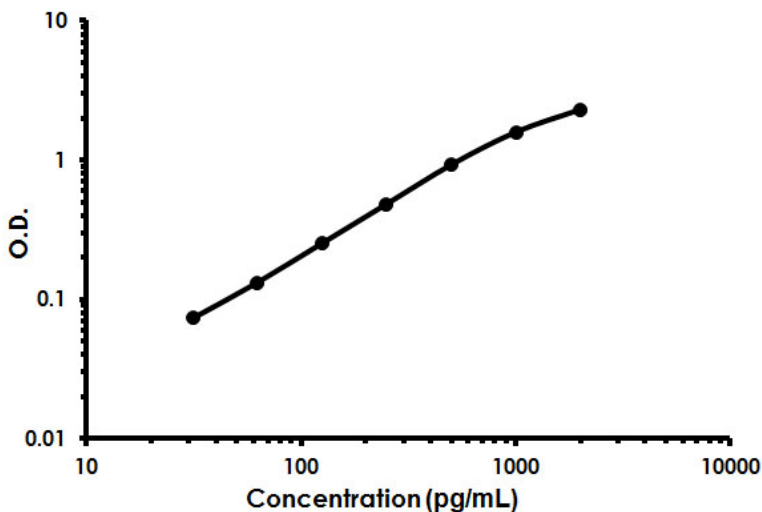


Figure 1. Human CYR61 ELISA Kit (CCN1) (ab213772) Standard Curve.

15. Typical sample values

Sensitivity –

The biological sensitivity of the assay is <10 pg/mL.

The range is 31.2 pg/mL – 2,000 pg/mL.

Precision –

Intra-assay precision: (Precision within an assay) Three samples of known concentration were tested on one plate to assess intra-assay precision.

Sample	Number of measures	Mean (pg/mL)	Standard Deviation	CV%
1	16	61	2.86	4.7
2	16	248	16.12	6.5
3	16	814	55.35	6.8

Inter-assay precision: (Precision between assays) Three samples of known concentration were tested in separate assays to assess inter-assay precision.

Sample	Number of assays	Mean (pg/mL)	Standard Deviation	CV%
1	24	59	3.3	5.6
2	24	242	17.66	7.3
3	24	806	64.48	8

Specificity:

Natural and recombinant Human CYR61/CCN1.

Cross-reactivity:

There is no detectable cross-reactivity with other relevant proteins.

16. Troubleshooting

Problem	Cause	Solution
Poor standard curve	Inaccurate Pipetting	Check Pipettes
	Improper standard dilution	Prior to opening, briefly spin the stock standard tube and dissolve the powder thoroughly by gentle mixing
Low Signal	Incubation times too brief	Ensure sufficient incubation times standard/sample incubation
	Inadequate reagent volumes or improper dilution	Check Pipettes and ensure correct preparation
	Incubation times with TMB Color Developing Agent too brief	Ensure sufficient incubation time until blue color develops prior addition of TMB Stop Solution
Large CV	Plate is insufficiently washed	Review manual for proper wash technique. If using a plate washer, check all ports for obstructions.
	Contaminated wash buffer	Prepare fresh wash buffer
Low sensitivity	Improper storage of the ELISA kit	All components 4°C. Keep TMB Color Developing Agent substrate solution protected from light.

17. Notes

Technical Support

Copyright © 2024 Abcam, All Rights Reserved. The Abcam logo is a registered trademark. All information / detail is correct at time of going to print.

For all technical or commercial enquiries please go to:

www.abcam.com/contactus

www.abcam.cn/contactus (China)

www.abcam.co.jp/contactus (Japan)