

Version 3a Last updated 11 April 2024

# ab220651 Human beta IG-H3 SimpleStep ELISA<sup>®</sup> Kit

For the quantitative measurement of human beta IG-H3 in serum, plasma, cell culture supernatant, and cell extract samples.

This product is for research use only and is not intended for diagnostic use.

# Table of Contents

1. Overview	1
2. Protocol Summary	2
3. Precautions	3
4. Storage and Stability	3
5. Limitations	4
6. Materials Supplied	4
7. Materials Required, Not Supplied	5
8. Technical Hints	5
9. Reagent Preparation	7
10. Standard Preparation	8
11. Sample Preparation	10
12. Plate Preparation	12
13. Assay Procedure	13
14. Calculations	15
15. Typical Data	16
16. Typical Sample Values	18
17. Assay Specificity	23
18. Species Reactivity	23
19. Troubleshooting	24
20. Notes	25

# 1. Overview

Beta IG-H3 *in vitro* SimpleStep ELISA® (Enzyme-Linked Immunosorbent Assay) kit is designed for the quantitative measurement of human beta IG-H3 protein in serum, plasma, cell culture supernatant, and cell extract samples.

The SimpleStep ELISA® employs an affinity tag labeled capture antibody and a reporter conjugated detector antibody which immunocapture the sample analyte in solution. This entire complex (capture antibody/analyte/detector antibody) is in turn immobilized via immunoaffinity of an anti-tag antibody coating the well. To perform the assay, samples or standards are added to the wells, followed by the antibody mix. After incubation, the wells are washed to remove unbound material. TMB development solution is added and during incubation is catalyzed by HRP, generating blue coloration. This reaction is then stopped by addition of Stop Solution completing any color change from blue to yellow. Signal is generated proportionally to the amount of bound analyte and the intensity is measured at 450 nm. Optionally, instead of the endpoint reading, development of TMB can be recorded kinetically at 600 nm.

Human beta IG-H3 is also known as Kerato-epithelin and RGD-CAP (RGD-containing collagen associated protein), is a secreted adhesion molecule that binds to collagens and integrins via covalent and noncovalent interactions. It encodes a 683-amino acid protein containing a secretory signal sequence and four homologous internal domains. Mouse and bovine beta IG-H3 proteins are 90.6% and 92.7% homologous to human beta IG-H3, respectively.

## 2. Protocol Summary

Prepare all reagents, samples, and standards as instructed



Add 50  $\mu$ L standard or sample to appropriate wells



Add 50  $\mu$ L Antibody Cocktail to all wells



Incubate at room temperature for 1 hour



Aspirate and wash each well three times with 350  $\mu$ L 1X Wash Buffer  
PT



Add 100  $\mu$ L TMB Development Solution to each well and incubate  
for 10 minutes.



Add 100  $\mu$ L Stop Solution and read OD at 450 nm

### 3. Precautions

Please read these instructions carefully prior to beginning the assay.

- All kit components have been formulated and quality control tested to function successfully as a kit.
- We understand that, occasionally, experimental protocols might need to be modified to meet unique experimental circumstances. However, we cannot guarantee the performance of the product outside the conditions detailed in this protocol booklet.
- Reagents should be treated as possible mutagens and should be handled with care and disposed of properly. Please review the Safety Datasheet (SDS) provided with the product for information on the specific components.
- Observe good laboratory practices. Gloves, lab coat, and protective eyewear should always be worn. Never pipet by mouth. Do not eat, drink or smoke in the laboratory areas.
- All biological materials should be treated as potentially hazardous and handled as such. They should be disposed of in accordance with established safety procedures.

### 4. Storage and Stability

Store kit at +4°C immediately upon receipt. Kit has a storage time of 1 year from receipt, providing components have not been reconstituted.

Refer to list of materials supplied for storage conditions of individual components.

## 5. Limitations

- Assay kit intended for research use only. Not for use in diagnostic procedures.
- Do not mix or substitute reagents or materials from other kit lots or vendors. Kits are QC tested as a set of components and performance cannot be guaranteed if utilized separately or substituted.

## 6. Materials Supplied

Item	Quantity	Storage Condition
Human beta IG-H3 Capture Antibody 10X	600 µL	+4°C
Human beta IG-H3 Detector Antibody 10X	600 µL	+4°C
Human beta IG-H3 Lyophilized Recombinant Protein	2 Vials	+4°C
Antibody Diluent CPI2*	6 mL	+4°C
Wash Buffer PT 10X	20 mL	+4°C
Cell Extraction Buffer PTR 5X	10 mL	+4°C
Cell Extraction Enhancer Solution 50X	1 mL	+4°C
TMB Development Solution	12 mL	+4°C
Stop Solution	12 mL	+4°C
Sample Diluent NS	50 mL	+4°C
Anti-tag coated microplate (12 x 8 well strips)	96 Wells	+4°C
Plate Seal	1	+4°C

**\*Note: Antibody Diluent CPI2- This buffer has been reformulated to enhance stability after freeze-thaw cycles while producing data equivalent to the original formulation of antibody diluent CPI previously used in this kit. While we run stock down, you may receive kits containing antibody diluent CPI. This does not affect the way you should use the kit. If you have any questions please contact Abcam Scientific Support.**

## 7. Materials Required, Not Supplied

These materials are not included in the kit, but will be required to successfully perform this assay:

- Microplate reader capable of measuring absorbance at 450 or 600 nm.
- Method for determining protein concentration (BCA assay recommended).
- Deionized water.
- Multi- and single-channel pipettes.
- Tubes for standard dilution.
- Plate shaker for all incubation steps.
- Optional: Phenylmethylsulfonyl Fluoride (PMSF) (or other protease inhibitors).

## 8. Technical Hints

- Samples generating values higher than the highest standard should be further diluted in the appropriate sample dilution buffers.
- Avoid foaming or bubbles when mixing or reconstituting components.
- Avoid cross contamination of samples or reagents by changing tips between sample, standard and reagent additions.
- Ensure plates are properly sealed or covered during incubation steps.
- Complete removal of all solutions and buffers during wash steps is necessary to minimize background.
- As a guide, typical ranges of sample concentration for commonly used sample types are shown below in Sample Preparation (section 11).
- All samples should be mixed thoroughly and gently.
- Avoid multiple freeze/thaw of samples.
- Incubate ELISA plates on a plate shaker during all incubation steps.
- When generating positive control samples, it is advisable to change pipette tips after each step.

- The provided Cell Extraction Enhancer Solution 50X may precipitate when stored at + 4°C. To dissolve, warm briefly at +37°C and mix gently. The Cell Extraction Enhancer Solution 50X can be stored at room temperature to avoid precipitation.
- **To avoid high background always add samples or standards to the well before the addition of the antibody cocktail.**
- **This kit is sold based on number of tests. A 'test' simply refers to a single assay well. The number of wells that contain sample, control or standard will vary by product. Review the protocol completely to confirm this kit meets your requirements. Please contact our Technical Support staff with any questions.**

## 9. Reagent Preparation

- Equilibrate all reagents to room temperature (18-25°C) prior to use. The kit contains enough reagents for 96 wells. The sample volumes below are sufficient for 48 wells (6 x 8-well strips); adjust volumes as needed for the number of strips in your experiment.
- Prepare only as much reagent as is needed on the day of the experiment. Capture and Detector Antibodies have only been tested for stability in the provided 10X formulations.

### 9.1 1X Cell Extraction Buffer PTR (For cell and tissue extracts only):

Prepare 1X Cell Extraction Buffer PTR by diluting Cell Extraction Buffer PTR 5X and 50X Cell Extraction Enhancer Solution to 1X with deionized water. To make 10 mL 1X Cell Extraction Buffer PTR combine 7.8 mL deionized water, 2 mL Cell Extraction Buffer PTR 5X and 200  $\mu$ L Cell Extraction Enhancer Solution 50X. Mix thoroughly and gently. If required protease inhibitors can be added.

Alternative – Enhancer may be added to 1X Cell Extraction Buffer PTR after extraction of cells or tissue. Refer to note in the Troubleshooting section.

### 9.2 1X Wash Buffer PT:

Prepare 1X Wash Buffer PT by diluting Wash Buffer PT 10X with deionized water. To make 50 mL 1X Wash Buffer PT combine 5 mL Wash Buffer PT 10X with 45 mL deionized water. Mix thoroughly and gently.

### 9.3 Antibody Cocktail:

Prepare Antibody Cocktail by diluting the capture and detector antibodies in Antibody Diluent CPI2. To make 3 mL of the Antibody Cocktail combine 300  $\mu$ L 10X Capture Antibody and 300  $\mu$ L 10X Detector Antibody with 2.4 mL Antibody Diluent CPI2. Mix thoroughly and gently.

## 10. Standard Preparation

- Always prepare a fresh set of standards for every use.
- Discard working standard dilutions after use as they do not store well.
- The following section describes the preparation of a standard curve for duplicate measurements (recommended).

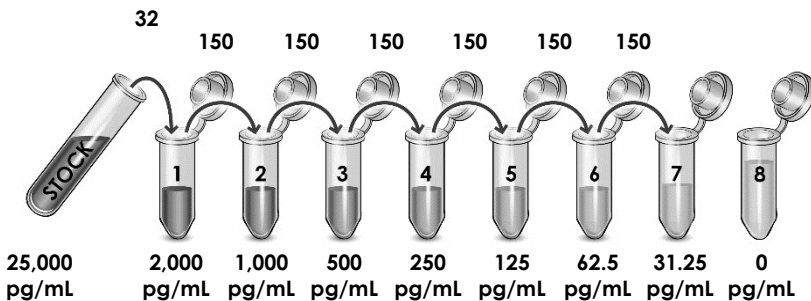
**10.1** For **serum, plasma, and cell culture supernatant samples** follow these instructions:

**10.1.1 IMPORTANT:** If the protein standard vial has a volume identified on the label, reconstitute the human beta IG-H3 standard by adding that volume of Sample Diluent NS indicated on the label. Alternatively, if the vial has a mass identified, reconstitute the human beta IG-H3 standard by adding 1,000  $\mu\text{L}$  Sample Diluent NS. Hold at room temperature for 10 minutes and mix gently. This is the 25,000  $\text{pg/mL}$  **Stock Standard** Solution.

**10.1.2** Label eight tubes, Standards 1–8.

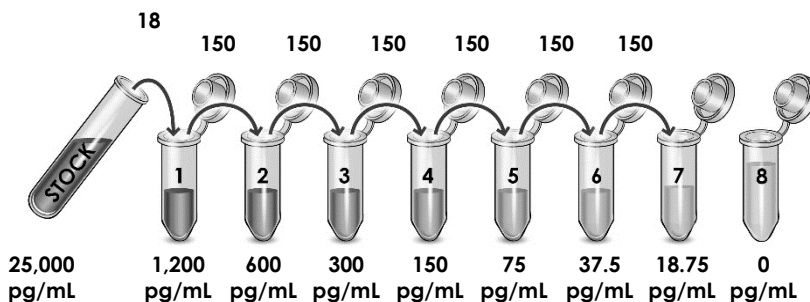
**10.1.3** Add 368  $\mu\text{L}$  of Sample Diluent NS into tube number 1 and 150  $\mu\text{L}$  of Sample Diluent NS into numbers 2-8.

**10.1.4** Use the Stock Standard to prepare the following dilution series. Standard #8 contains no protein and is the Blank control:



## 10.2 For cell extract samples follow these instructions:

- 10.2.1 **IMPORTANT:** If the protein standard vial has a volume identified on the label, reconstitute the human beta IG-H3 standard by adding that volume of 1X Cell Extraction Buffer PTR indicated on the label. Alternatively, if the vial has a mass identified, reconstitute the human beta IG-H3 standard by adding 1,000  $\mu\text{L}$  1X Cell Extraction Buffer PTR. Hold at room temperature for 10 minutes and mix gently. This is the 25,000 pg/mL **Stock Standard** Solution.
- 10.2.2 Label eight tubes, Standards 1– 8.
- 10.2.3 Add 357  $\mu\text{L}$  of 1X Cell Extraction Buffer PTR into tube number 1 and 150  $\mu\text{L}$  of Sample Diluent 1X Cell Extraction Buffer PTR into numbers 2-8.
- 10.2.4 Use the Stock Standard to prepare the following dilution series. Standard #8 contains no protein and is the Blank control:



## 11. Sample Preparation

Typical Sample Dynamic Range	
Sample Type	Range
Plasma - Heparin	1:64,000 – 1:4,000
Plasma - EDTA	1:64,000 – 1:4,000
Plasma - Citrate	1:64,000 – 1:4,000
Serum	1:64,000 – 1:4,000
RPMI Culture Media*	1.56% – 25%
HUVEC Supernatant	1:200 – 1:12.5
U87-MG Cell Extract	0.63 – 10 µg/mL

\*Contains 10% Fetal Bovine Serum

### 11.1 Plasma:

Collect plasma using citrate, EDTA or heparin. Centrifuge samples at 2,000 x g for 10 minutes. Dilute samples into Sample Diluent NS and assay. Store un-diluted plasma samples at -20°C or below for up to 3 months. Avoid repeated freeze-thaw cycles.

### 11.2 Serum:

Samples should be collected into a serum separator tube. After clot formation, centrifuge samples at 2,000 x g for 10 minutes and collect serum. Dilute samples into Sample Diluent NS and assay. Store un-diluted serum at -20°C or below. Avoid repeated freeze-thaw cycles.

### 11.3 Cell Culture Supernatants:

Centrifuge cell culture media at 2,000 x g for 10 minutes to remove debris. Collect supernatants and dilute samples into Sample Diluent NS and assay. Store un-diluted samples at -20°C or below. Avoid repeated freeze-thaw cycles.

### 11.4 Preparation of extracts from cell pellets:

- 11.4.1 Collect non-adherent cells by centrifugation or scrape to collect adherent cells from the culture flask. Typical centrifugation conditions for cells are 500 x g for 5 minutes at 4°C.

- 11.4.2 Rinse cells twice with PBS.
  - 11.4.3 Solubilize pellet at  $2 \times 10^7$  cell/mL in chilled 1X Cell Extraction Buffer PTR.
  - 11.4.4 Incubate on ice for 20 minutes.
  - 11.4.5 Centrifuge at  $18,000 \times g$  for 20 minutes at  $4^{\circ}\text{C}$ .
  - 11.4.6 Transfer the supernatants into clean tubes and discard the pellets.
  - 11.4.7 Assay samples immediately or aliquot and store at  $-80^{\circ}\text{C}$ . The sample protein concentration in the extract may be quantified using a protein assay.
  - 11.4.8 Dilute samples to desired concentration in 1X Cell Extraction Buffer PTR.
- 11.5 Preparation of extracts from adherent cells by direct lysis (alternative protocol):**
- 11.5.1 Remove growth media and rinse adherent cells 2 times in PBS.
  - 11.5.2 Solubilize the cells by addition of chilled 1X Cell Extraction Buffer PTR directly to the plate (use  $750 \mu\text{L}$  -  $1.5 \text{ mL}$  1X Cell Extraction Buffer PTR per confluent  $15 \text{ cm}$  diameter plate).
  - 11.5.3 Scrape the cells into a microfuge tube and incubate the lysate on ice for 15 minutes.
  - 11.5.4 Centrifuge at  $18,000 \times g$  for 20 minutes at  $4^{\circ}\text{C}$ .
  - 11.5.5 Transfer the supernatants into clean tubes and discard the pellets.
  - 11.5.6 Assay samples immediately or aliquot and store at  $-80^{\circ}\text{C}$ . The sample protein concentration in the extract may be quantified using a protein assay.
  - 11.5.7 Dilute samples to desired concentration in 1X Cell Extraction Buffer PTR.

## 12. Plate Preparation

- The 96 well plate strips included with this kit are supplied ready to use. It is not necessary to rinse the plate prior to adding reagents.
- Unused plate strips should be immediately returned to the foil pouch containing the desiccant pack, resealed and stored at 4°C.
- For each assay performed, a minimum of two wells must be used as the zero control.
- For statistical reasons, we recommend each sample should be assayed with a minimum of two replicates (duplicates).
- Differences in well absorbance or “edge effects” have not been observed with this assay.

## 13. Assay Procedure

- Equilibrate all materials and prepared reagents to room temperature prior to use.
  - We recommend that you assay all standards, controls and samples in duplicate.
- 13.1** Prepare all reagents, working standards, and samples as directed in the previous sections.
  - 13.2** Remove excess microplate strips from the plate frame, return them to the foil pouch containing the desiccant pack, reseal and return to 4°C storage.
  - 13.3** Add 50  $\mu$ L of all sample or standard to appropriate wells.
  - 13.4** Add 50  $\mu$ L of the Antibody Cocktail to each well.
  - 13.5** Seal the plate and incubate for 1 hour at room temperature on a plate shaker set to 400 rpm.
  - 13.6** Wash each well with 3 x 350  $\mu$ L 1X Wash Buffer PT. Wash by aspirating or decanting from wells then dispensing 350  $\mu$ L 1X Wash Buffer PT into each well. Wash Buffer PT should remain in wells for at least 10 seconds. Complete removal of liquid at each step is essential for good performance. After the last wash invert the plate and tap gently against clean paper towels to remove excess liquid.
  - 13.7** Add 100  $\mu$ L of TMB Development Solution to each well and incubate for 10 minutes in the dark on a plate shaker set to 400 rpm.

*Given variability in laboratory environmental conditions, optimal incubation time may vary between 5 and 20 minutes.*

*Note: The addition of Stop Solution will change the color from blue to yellow and enhance the signal intensity about 3X. To avoid signal saturation, proceed to the next step before the high concentration of the standard reaches a blue color of O.D.600 equal to 1.0.*
  - 13.8** Add 100  $\mu$ L of Stop Solution to each well. Shake plate on a plate shaker for 1 minute to mix. Record the OD at 450 nm. This is an endpoint reading.
  - 13.9** Alternative to 13.7 – 13.8: Instead of the endpoint reading at 450 nm, record the development of TMB Substrate kinetically. Immediately after addition of TMB Development Solution begin recording the blue color development with elapsed

time in the microplate reader prepared with the following settings:

<b>Mode</b>	<b>Kinetic</b>
Wavelength:	600 nm
Time:	up to 15 min
Interval:	20 sec - 1 min
Shaking:	Shake between readings

**Δ Note:** that an endpoint reading can also be recorded at the completion of the kinetic read by adding 100  $\mu$ L Stop Solution to each well and recording the OD at 450 nm.

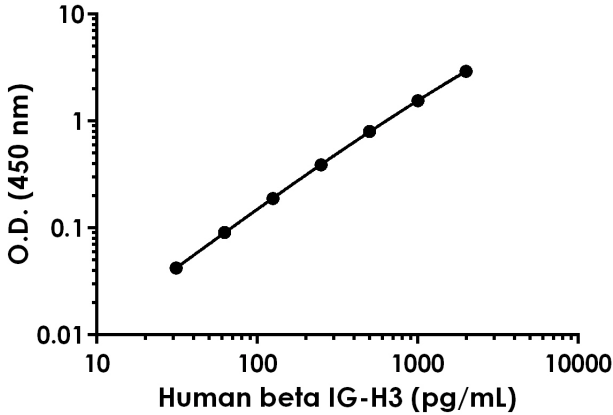
**13.10** Analyze the data as described below.

## 14. Calculations

- 14.1 Calculate the average absorbance value for the blank control (zero) standards. Subtract the average blank control standard absorbance value from all other absorbance values.
- 14.2 **Create a standard curve** by plotting the average blank control subtracted absorbance value for each standard concentration (y-axis) against the target protein concentration (x-axis) of the standard. Use graphing software to draw the best smooth curve through these points to construct the standard curve.
  - Δ **Note:** Most microplate reader software or graphing software will plot these values and fit a curve to the data. A four parameter curve fit (4PL) is often the best choice; however, other algorithms (e.g. linear, semi-log, log/log, 4 parameter logistic) can also be tested to determine if it provides a better curve fit to the standard values.
- 14.3 Determine the concentration of the target protein in the sample by interpolating the blank control subtracted **absorbance values against the standard curve**. Multiply the resulting value by the appropriate sample dilution factor, if used, to obtain the concentration of target protein in the sample.
- 14.4 Samples generating absorbance values greater than that of the highest standard should be further diluted and reanalyzed. Similarly, samples which measure at an absorbance values less than that of the lowest standard should be retested in a less dilute form.

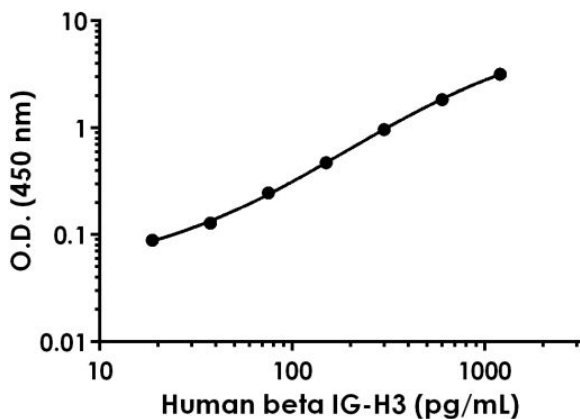
## 15. Typical Data

Typical standard curve – data provided for demonstration purposes only. A new standard curve must be generated for each assay performed.



Standard Curve Measurements			
Concentration (pg/mL)	O.D 450 nm		Mean O.D
	1	2	
0	0.074	0.083	0.078
31.25	0.119	0.122	0.120
62.5	0.168	0.170	0.169
125	0.268	0.267	0.267
250	0.469	0.468	0.469
500	0.888	0.869	0.879
1,000	1.640	1.621	1.631
2,000	3.037	2.985	3.011

**Figure 1.** Example of human beta IG-H3 standard curve in Sample Diluent NS. The beta IG-H3 standard curve was prepared as described in Section 10. Raw data values are shown in the table. Background-subtracted data values (mean +/- SD) are graphed.



Standard Curve Measurements			
Concentration (pg/mL)	O.D 450 nm		Mean O.D
	1	2	
0	0.089	0.094	0.092
18.75	0.186	0.175	0.181
37.5	0.217	0.224	0.220
75	0.333	0.345	0.339
150	0.546	0.587	0.566
300	1.043	1.082	1.062
600	1.956	1.923	1.939
1,200	3.271	3.266	3.268

**Figure 2.** Example of human beta IG-H3 standard curve in 1X Cell Extraction Buffer PTR. The beta IG-H3 standard curve was prepared as described in Section 10. Raw data values are shown in the table. Background-subtracted data values (mean +/- SD) are graphed.

## 16. Typical Sample Values

### SENSITIVITY –

The calculated minimal detectable dose (MDD) was determined by calculating the mean of zero standard replicates and adding 2 standard deviations then extrapolating the corresponding concentration.

Sample Diluent Buffer	n=	Minimal Detectable Dose
Sample Diluent NS	24	17.59 pg/mL
1X Cell Extraction Buffer PTR	24	6.3 pg/mL

### RECOVERY –

Three concentrations of human beta IG-H3 were spiked in duplicate to the indicated biological matrix to evaluate signal recovery in the working range of the assay.

Sample Type	Average % Recovery	Range (%)
Human Plasma – Heparin (1:4000)	94	91 – 99
Human Plasma - EDTA (1:4000)	101	98 – 105
Human Plasma - Citrate (1:4000)	100	97 – 104
Human Serum (1:4000)	99	97 – 101
RPMI Culture Media (25%)	88	84 – 90
HUVEC Supernatant (3%)	104	103 – 107
U87-MG Cell Extract (3 µg/mL)	94	92 – 98

## Linearity of Dilution

Linearity of dilution is determined based on interpolated values from the standard curve. Linearity of dilution defines a sample concentration interval in which interpolated target concentrations are directly proportional to sample dilution.

Native human beta IG-H3 was measured in serum, plasma, HUVEC supernatant, and U87-MG cell extract samples in a 2-fold dilution series. Serum, plasma, and supernatant sample dilutions are made in Sample Diluent NS. Cell extract sample dilutions are made in Sample Diluent 1X Cell Extraction Buffer PTR.

Recombinant human beta IG-H3 was spiked into RPMI base media and diluted in a 2-fold dilution series in Sample Diluent NS.

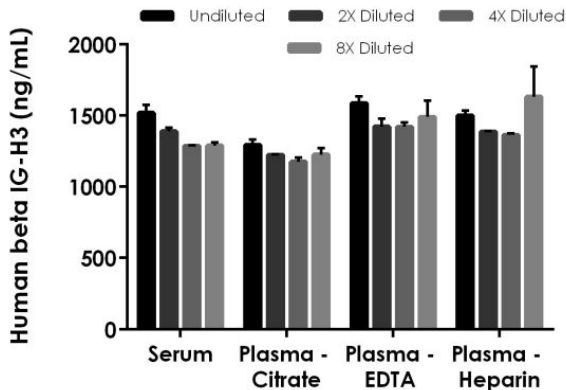
Dilution Factor	Interpolated value	1:4,000 Human Serum	1:4,000 Human Plasma (Citrate)	1:4,000 Human Plasma (EDTA)	1:4,000 Human Plasma (Heparin)
Undiluted	pg/mL	379.71	323.27	396.69	374.96
	<b>% Expected value</b>	100	100	100	100
2	pg/mL	173.70	153.02	177.65	173.35
	<b>% Expected value</b>	91	95	90	92
4	pg/mL	80.44	73.50	88.82	85.24
	<b>% Expected value</b>	85	91	90	91
8	pg/mL	40.29	38.29	46.50	50.78
	<b>% Expected value</b>	85	95	94	108

Dilution Factor	Interpolated value	25% RPMI Culture Media	8% HUVEC Supernatant	10 µg/mL U87-MG Cell Extract
Undiluted	pg/mL	839.48	1,741.26	834.18
	<b>% Expected value</b>	100	100	100
2	pg/mL	458.80	761.42	386.87
	<b>% Expected value</b>	109	87	93
4	pg/mL	252.07	364.54	181.60
	<b>% Expected value</b>	120	84	87
8	pg/mL	127.20	174.56	43.62
	<b>% Expected value</b>	121	80	83
16	pg/mL	62.69	85.41	26.09
	<b>% Expected value</b>	119	78	84

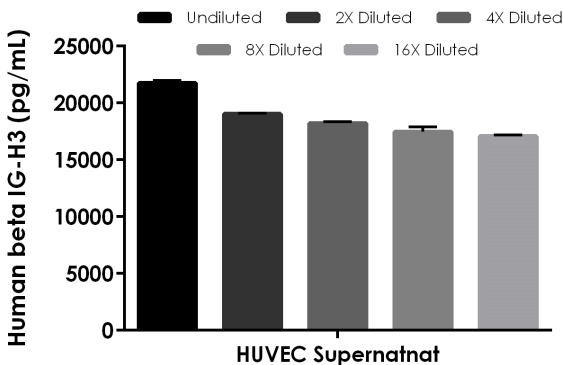
#### PRECISION –

Mean coefficient of variations of interpolated values from three concentrations of human serum within the working range of the assay.

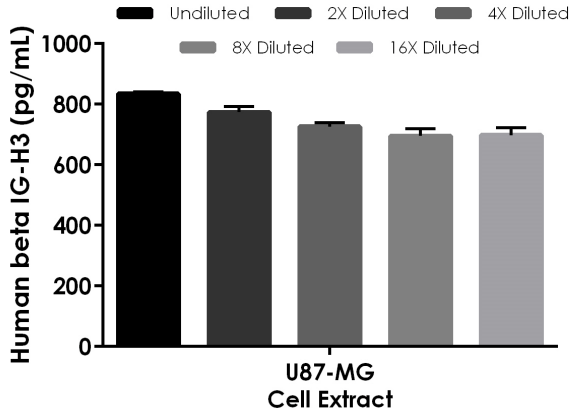
	Intra-Assay	Inter-Assay
n =	8	3
CV(%)	2.4	3.2



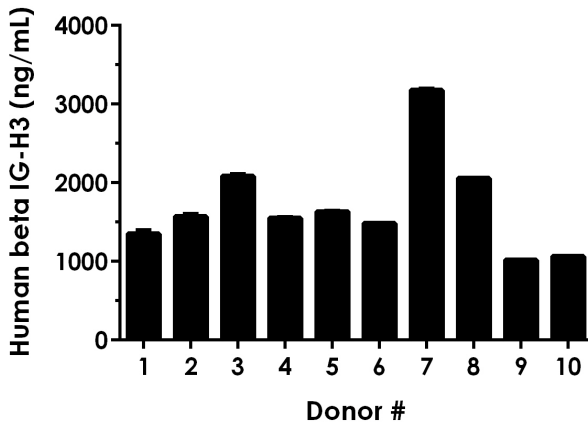
**Figure 3.** Interpolated concentrations of native beta IG-H3 in human serum and plasma samples. The concentrations of beta IG-H3 were measured in duplicates, interpolated from the beta IG-H3 standard curves and corrected for sample dilution. Undiluted samples are as follows: serum 1:4,000, plasma (citrate) 1:4,000, plasma (EDTA) 1:4,000, and plasma (heparin) 1:4,000. The interpolated dilution factor corrected values are plotted (mean +/- SD, n=2). The mean beta IG-H3 concentration was determined to be 1,371.41 ng/mL in neat serum, 1,229.89 ng/mL in neat plasma (citrate), 1,480.27 ng/mL in neat plasma (EDTA), and 1,470.88 ng/mL in neat plasma (heparin).



**Figure 4.** Interpolated concentrations of native beta IG-H3 in human HUVEC supernatant. The concentrations of beta IG-H3 were measured in duplicates, interpolated from the beta IG-H3 standard curves and corrected for sample dilution. Undiluted samples are as follows: HUVEC supernatant 8%. The interpolated dilution factor corrected values are plotted (mean +/- SD, n=2). The mean beta IG-H3 concentration was determined to be 18,714.03 pg/mL in neat HUVEC supernatant. HUVEC supernatants were cultured in RPMI base media with 10% fetal bovine serum.



**Figure 5.** Interpolated concentrations of native beta IG-H3 in human U87-MG cell extract based on a 10 µg/mL extract load. The concentrations of beta IG-H3 were measured in duplicate and interpolated from the beta IG-H3 standard curve and corrected for sample dilution. The interpolated dilution factor corrected values are plotted (mean +/- SD, n=2). The mean beta IG-H3 concentration was determined to be 745.58 pg/mL in U87-MG cell extract.



**Figure 6.** Serum from ten individual healthy human male donors was measured in duplicate. Interpolated dilution factor corrected values are plotted (mean +/- SD, n=2). The mean beta IG-H3 concentration was determined to be 1,699.81 ng/mL with a range of 1,014.25 – 3,195.39 ng/mL.

## 17. Assay Specificity

This kit recognizes both native and recombinant human beta IG-H3 protein in serum, plasma, cell culture supernatant, and cell extract samples only.

### CROSS REACTIVITY

Recombinant mouse beta IG-H3 was prepared at 10,000 pg/mL and 2,000 pg/mL and assayed for cross reactivity. Less than 1% cross-reactivity was observed.

### INTERFERENCE

Recombinant mouse beta IG-H3 was prepared at 10,000 pg/mL and 2,000 pg/mL and tested for interference. No interference with was observed.

## 18. Species Reactivity

This kit recognizes human beta IG-H3 protein.

Other species reactivity was determined by measuring 1:5,000 diluted serum samples of various species, interpolating the protein concentrations from the human standard curve, and expressing the interpolated concentrations as a percentage of the protein concentration in human serum assayed at the same dilution.

Reactivity < 3% was determined for the following species:

- Mouse
- Rat
- Cow

Please contact our Technical Support team for more information.

## 19. Troubleshooting

Problem	Reason	Solution
<b>Difficulty pipetting lysate; viscous lysate.</b>	Genomic DNA solubilized	Prepare 1X Cell Extraction Buffer PTR (without enhancer). Add enhancer to lysate after extraction.
<b>Poor standard curve</b>	Inaccurate Pipetting	Check pipettes
	Improper standard dilution	Prior to opening, briefly spin the stock standard tube and dissolve the powder thoroughly by gentle mixing
<b>Low Signal</b>	Incubation times too brief	Ensure sufficient incubation times; increase to 2 or 3 hour standard/sample incubation
	Inadequate reagent volumes or improper dilution	Check pipettes and ensure correct preparation
	Incubation times with TMB too brief	Ensure sufficient incubation time until blue color develops prior addition of Stop solution
<b>Large CV</b>	Plate is insufficiently washed	Review manual for proper wash technique. If using a plate washer, check all ports for obstructions.
	Contaminated wash buffer	Prepare fresh wash buffer
<b>Low sensitivity</b>	Improper storage of the ELISA kit	Store your reconstituted standards at -80°C, all other assay components 4°C. Keep TMB substrate solution protected from light.
<b>Precipitate in Diluent</b>	Precipitation and/or coagulation of components within the Diluent.	Precipitate can be removed by gently warming the Diluent to 37°C.

# 20. Notes

# Technical Support

Copyright © 2024 Abcam, All Rights Reserved. The Abcam logo is a registered trademark. All information / detail is correct at time of going to print.

**For all technical or commercial enquiries please go to:**

[www.abcam.com/contactus](http://www.abcam.com/contactus)

[www.abcam.cn/contactus](http://www.abcam.cn/contactus) (China)

[www.abcam.co.jp/contactus](http://www.abcam.co.jp/contactus) (Japan)