

Version 3 Last updated 23 October 2023

ab264607 Human Nectin-4 SimpleStep ELISA[®] Kit

For the quantitative measurement of Nectin-4 in human serum, plasma heparin, cell and tissue culture supernatant, urine, and cell and tissue culture extract samples.

This product is for research use only and is not intended for diagnostic use.

Table of Contents

1. Overview	1
2. Protocol Summary	2
3. Precautions	3
4. Storage and Stability	3
5. Limitations	4
6. Materials Supplied	4
7. Materials Required, Not Supplied	5
8. Technical Hints	5
9. Reagent Preparation	7
10. Standard Preparation	9
11. Sample Preparation	12
12. Plate Preparation	15
13. Assay Procedure	16
14. Calculations	18
15. Typical Data	19
16. Typical Sample Values	22
17. Assay Specificity	29
18. Species Reactivity	29
19. Troubleshooting	30
20. Notes	31
Technical Support	34

1. Overview

Nectin-4 *in vitro* SimpleStep ELISA® (Enzyme-Linked Immunosorbent Assay) kit is designed for the quantitative measurement of Nectin-4 protein in human serum, plasma heparin, cell and tissue culture supernatant, urine, and cell and tissue culture extract samples

The SimpleStep ELISA® employs an affinity tag labeled capture antibody and a reporter conjugated detector antibody which immunocapture the sample analyte in solution. This entire complex (capture antibody/analyte/detector antibody) is in turn immobilized via immunoaffinity of an anti-tag antibody coating the well. To perform the assay, samples or standards are added to the wells, followed by the antibody mix. After incubation, the wells are washed to remove unbound material. TMB Development Solution is added and during incubation is catalyzed by HRP, generating blue coloration. This reaction is then stopped by addition of Stop Solution completing any color change from blue to yellow. Signal is generated proportionally to the amount of bound analyte and the intensity is measured at 450 nm. Optionally, instead of the endpoint reading, development of TMB can be recorded kinetically at 600 nm.

Nectin-4 is a cell adhesion molecule located in the epithelial adherens junctions. Mutations in Nectin-4 lead to Ectodermal dysplasia-syndactyly syndrome, a condition where there is abnormal development of two or more ectodermal structures (like hair, tooth and nails). A fragment of Nectin-4 is shed and circulates in serum in certain types of cancers. Additionally, Nectin-4 is also a receptor for the measles virus.

2. Protocol Summary

Prepare all reagents, samples, and standards as instructed



Add 50 μ L standard or sample to appropriate wells



Add 50 μ L Antibody Cocktail to all wells



Incubate at room temperature for 1 hour



Aspirate and wash each well three times with 350 μ L 1X Wash Buffer
PT



Add 100 μ L TMB Development Solution to each well and incubate
for 10 minutes.



Add 100 μ L Stop Solution and read OD at 450 nm

3. Precautions

Please read these instructions carefully prior to beginning the assay.

- All kit components have been formulated and quality control tested to function successfully as a kit.
- We understand that, occasionally, experimental protocols might need to be modified to meet unique experimental circumstances. However, we cannot guarantee the performance of the product outside the conditions detailed in this protocol booklet.
- Reagents should be treated as possible mutagens and should be handled with care and disposed of properly. Please review the Safety Datasheet (SDS) provided with the product for information on the specific components.
- Observe good laboratory practices. Gloves, lab coat, and protective eyewear should always be worn. Never pipet by mouth. Do not eat, drink or smoke in the laboratory areas.
- All biological materials should be treated as potentially hazardous and handled as such. They should be disposed of in accordance with established safety procedures.

4. Storage and Stability

Store kit at +4°C immediately upon receipt. Kit has a storage time of 1 year from receipt, providing components have not been reconstituted.

Refer to list of materials supplied for storage conditions of individual components.

5. Limitations

- Assay kit intended for research use only. Not for use in diagnostic procedures.
- Do not mix or substitute reagents or materials from other kit lots or vendors. Kits are QC tested as a set of components and performance cannot be guaranteed if utilized separately or substituted.

6. Materials Supplied

Item	Quantity	Storage Condition
Human Nectin-4 Capture Antibody 10X	600 µL	+4°C
Human Nectin-4 Detector Antibody 10X	600 µL	+4°C
Human Nectin-4 Lyophilized Recombinant Protein	2 Vials	+4°C
Antibody Diluent 5BI	6 mL	+4°C
Cell Extraction Buffer PTR 5X	10 mL	+4°C
Cell Extraction Enhancer Solution 50X	1 mL	+4°C
Sample Diluent 25BS	20 mL	+4°C
Sample Diluent NS	12 mL	+4°C
Wash Buffer PT 10X	20 mL	+4°C
TMB Development Solution	12 mL	+4°C
Stop Solution	12 mL	+4°C
SimpleStep Pre-Coated 96-Well Microplate	96 Wells	+4°C
Plate Seal	1	+4°C

7. Materials Required, Not Supplied

These materials are not included in the kit, but will be required to successfully perform this assay:

- Microplate reader capable of measuring absorbance at 450 or 600 nm.
- Method for determining protein concentration (BCA assay recommended).
- Deionized water.
- Multi- and single-channel pipettes.
- Tubes for standard dilution.
- Plate shaker for all incubation steps.
- Heat block for heat treatment.
- Optional: Phenylmethylsulfonyl Fluoride (PMSF) (or other protease inhibitors).

8. Technical Hints

- Samples generating values higher than the highest standard should be further diluted in the appropriate sample dilution buffers.
- Avoid foaming or bubbles when mixing or reconstituting components.
- Avoid cross contamination of samples or reagents by changing tips between sample, standard and reagent additions.
- Ensure plates are properly sealed or covered during incubation steps.
- Complete removal of all solutions and buffers during wash steps is necessary to minimize background.
- As a guide, typical ranges of sample concentration for commonly used sample types are shown below in Sample Preparation (section 11).
- All samples should be mixed thoroughly and gently.
- Avoid multiple freeze/thaw of samples.
- Incubate ELISA plates on a plate shaker during all incubation steps.

- When generating positive control samples, it is advisable to change pipette tips after each step.
- The provided Cell Extraction Enhancer Solution 50X may precipitate when stored at + 4°C. To dissolve, warm briefly at + 37°C and mix gently. The Cell Extraction Enhancer Solution 50X can be stored at room temperature to avoid precipitation.
- To avoid high background always add samples or standards to the well before the addition of the antibody cocktail.
- This kit is sold based on number of tests. A 'test' simply refers to a single assay well. The number of wells that contain sample, control or standard will vary by product. Review the protocol completely to confirm this kit meets your requirements. Please contact our Technical Support staff with any questions.

9. Reagent Preparation

- Equilibrate all reagents to room temperature (18-25°C) prior to use. The kit contains enough reagents for 96 wells. The sample volumes below are sufficient for 48 wells (6 x 8-well strips); adjust volumes as needed for the number of strips in your experiment.
- Sample Diluent 25BS may contain precipitate, this is normal. If precipitate is not dissolved by gentle mixing, the precipitate may be dissolved by gentle warming and mixing at 37°C for 10 minutes. If precipitate remains, gently spin down and avoid visible precipitates when pipetting.
- Prepare only as much reagent as is needed on the day of the experiment. Capture and Detector Antibodies have only been tested for stability in the provided 10X formulations.

Sample Diluent 25BS + Enhancer (For serum and plasma heparin samples only):

Prepare Sample Diluent 25BS + Enhancer by diluting 50X Cell Extraction Enhancer Solution to 1X with Sample Diluent 25BS. To make 10 mL Sample Diluent 25BS combine 9.8 mL Sample Diluent 25BS and 200 µL Cell Extraction Enhancer Solution 50X. Mix thoroughly and gently. If required protease inhibitors can be added.

Sample Diluent NS + Enhancer (For cell and tissue supernatant and urine samples only):

Prepare Sample Diluent NS + Enhancer by diluting 50X Cell Extraction Enhancer Solution to 1X with Sample Diluent NS. To make 10 mL Sample Diluent NS combine 9.8 mL Sample Diluent NS and 200 µL Cell Extraction Enhancer Solution 50X. Mix thoroughly and gently. If required protease inhibitors can be added.

1X Cell Extraction Buffer PTR (For cell and tissue extracts only):

Prepare 1X Cell Extraction Buffer PTR by diluting Cell Extraction Buffer PTR 5X and 50X Cell Extraction Enhancer Solution to 1X with deionized water. To make 10 mL 1X Cell Extraction Buffer PTR combine 7.8 mL deionized water, 2 mL Cell Extraction Buffer PTR 5X and 200 µL Cell Extraction Enhancer Solution 50X. Mix thoroughly and gently. If required protease inhibitors can be added.

Alternative – Enhancer may be added to 1X Cell Extraction Buffer PTR after extraction of cells or tissue. Refer to note in the Troubleshooting section.

1X Wash Buffer PT:

Prepare 1X Wash Buffer PT by diluting Wash Buffer PT 10X with deionized water. To make 50 mL 1X Wash Buffer PT combine 5 mL Wash Buffer PT 10X with 45 mL deionized water. Mix thoroughly and gently.

Antibody Cocktail:

Prepare Antibody Cocktail by diluting the capture and detector antibodies in Antibody Diluent 5BI. To make 3 mL of the Antibody Cocktail combine 300 μ L 10X Capture Antibody and 300 μ L 10X Detector Antibody with 2.4 mL Antibody Diluent 5BI. Mix thoroughly and gently.

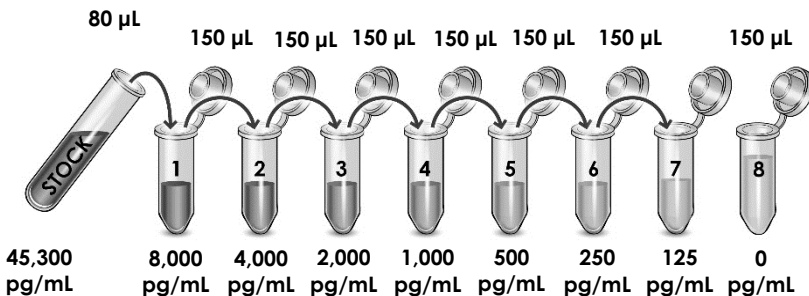
10. Standard Preparation

- Always prepare a fresh set of standards for every use.
- Discard working standard dilutions after use as they do not store well.
- The following section describes the preparation of a standard curve for duplicate measurements (recommended).

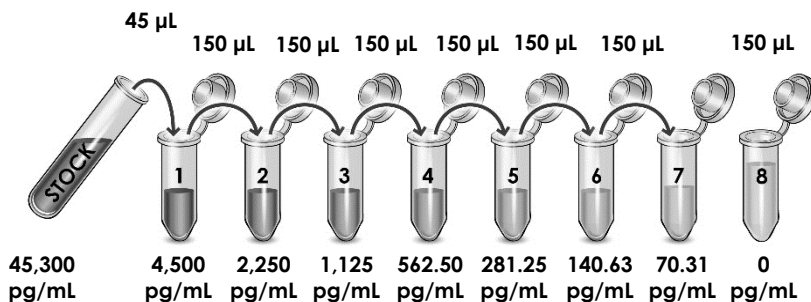
10.1 IMPORTANT: If the protein standard vial has a volume identified on the label, reconstitute the Nectin-4 by adding that volume of Diluent indicated on the label. Alternatively, if the vial has a mass identified, reconstitute the Nectin-4 standard by adding 500 μL Diluent. Hold at room temperature for 10 minutes and mix gently. This is the 45,300 pg/mL **Stock Standard Solution**.

For **serum and plasma (heparin) samples** follow these instructions:

- 10.1.1 Reconstitute the Nectin-4 standard sample by adding Sample Diluent 25BS + Enhancer.
- 10.1.2 Label eight tubes, Standards 1– 8.
- 10.1.3 Add 373 μL of Sample Diluent 25BS + Enhancer into tube number 1 and 150 μL of Sample Diluent 25BS + Enhancer into numbers 2-8.
- 10.1.4 Use the Stock Standard to prepare the following dilution series. Make the first dilution into tube number 1 and **heat sample for fifteen minutes at 50°C in a heat block**. Cool to room temperature, mix gently, spin down and complete the dilution series. Standard #8 contains no protein and is the Blank control:



- 10.2** For **cell and tissue supernatant and urine samples** follow these instructions:
- 10.2.1 Reconstitute the Nectin-4 standard sample by adding Sample Diluent NS + Enhancer.
- 10.2.2 Label eight tubes, Standards 1– 8.
- 10.2.3 Add 408 μL of Sample Diluent NS + Enhancer into tube number 1 and 150 μL of Sample Diluent NS + Enhancer into numbers 2-8.
- 10.2.4 Use the Stock Standard to prepare the following dilution series. Make the first dilution into tube number 1 and **heat sample for fifteen minutes at 50°C in a heat block**. Cool to room temperature, mix gently, spin down and complete the dilution series. Standard #8 contains no protein and is the Blank control:



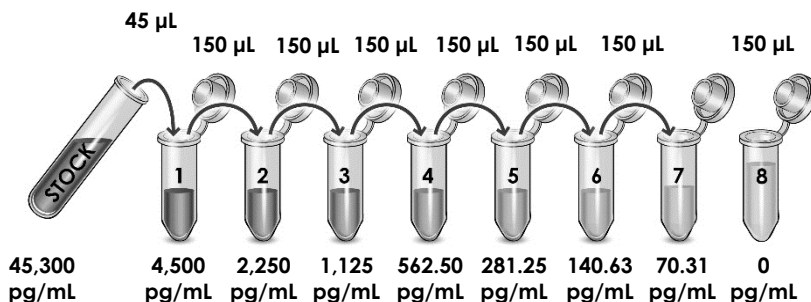
10.3 For **cell and tissue homogenate extract samples** follow these instructions:

10.3.1 Reconstitute the Nectin-4 standard sample by adding 1X Cell Extraction Buffer PTR.

10.3.2 Label eight tubes, Standards 1– 8.

10.3.3 Add 408 μL of Sample Diluent NS + Enhancer into tube number 1 and 150 μL of Sample Diluent NS + Enhancer into numbers 2-8.

10.3.4 Use the Stock Standard to prepare the following dilution series. Make the first dilution into tube number 1 and **heat sample for fifteen minutes at 50°C in a heat block**. Cool to room temperature, mix gently, spin down and complete the dilution series. Standard #8 contains no protein and is the Blank control:



11. Sample Preparation

Typical Sample Dynamic Range	
Sample Type	Range
Serum*	≤ 50%
Plasma – Heparin*	≤ 50%
OVCAR-3 cell culture supernatant	25 – 50%
Urine	3.13 – 50%
MCF7 Cell Extract	3.91 – 62.50 µg/mL

*Based on spiked sample.

Heat treatment of samples is required before use in assay:

1. Dilute to appropriate concentration
2. Heat sample for 15 minutes at 50°C in a heat block
3. Cool to room temperature, mix gently, spin down and apply to the assay

11.1 Serum:

Samples should be collected into a serum separator tube. After clot formation, centrifuge samples at 2,000 x g for 10 minutes and collect serum. Add 50X Enhancer to serum to a final concentration of 1X. Then dilute samples at least 1:2 into Sample Diluent 25BS + Enhancer, treat as described above, and assay. Any serial dilutions should be made in Sample Diluent 25BS + Enhancer. Store un-diluted serum at -20°C or below. Avoid repeated freeze-thaw cycles.

11.2 Plasma:

Collect plasma using heparin. Plasma collected using citrate and EDTA is not compatible with this assay. Centrifuge samples at 2,000 x g for 10 minutes. Add 50X Enhancer to plasma to a final concentration of 1X. Then dilute samples at least 1:2 into Sample Diluent 25BS + Enhancer, treat as described above, and assay. Any serial dilutions should be made in Sample Diluent 25BS + Enhancer. Store un-diluted plasma samples at -20°C or below for up to 3 months. Avoid repeated freeze-thaw cycles.

11.3 Cell Culture Supernatants:

Centrifuge cell culture media at 2,000 x g for 10 minutes to remove debris. Collect supernatants and add 50X Enhancer to supernatant to a final concentration of 1X. Then dilute samples at least 1:2 into Sample Diluent NS + Enhancer, treat as described above, and assay. Any serial dilutions should be made in Sample Diluent NS + Enhancer. Store un-diluted samples at -20°C or below. Avoid repeated freeze-thaw cycles.

11.4 Urine:

Centrifuge urine at 2,000 x g for 10 minutes to remove debris. add 50X Enhancer to urine to a final concentration of 1X. Then dilute samples at least 1:2 into Sample Diluent NS + Enhancer, treat as described above, and assay. Any serial dilutions should be made in Sample Diluent NS + Enhancer. Store un-diluted urine samples at -20°C or below. Avoid repeated freeze-thaw cycles.

11.5 Preparation of extracts from cell pellets:

11.5.1 Collect non-adherent cells by centrifugation or scrape to collect adherent cells from the culture flask. Typical centrifugation conditions for cells are 500 x g for 5 minutes at 4°C.

11.5.2 Rinse cells twice with PBS.

11.5.3 Solubilize pellet at 2×10^7 cell/mL in chilled 1X Cell Extraction Buffer PTR.

11.5.4 Incubate on ice for 20 minutes.

11.5.5 Centrifuge at 18,000 x g for 20 minutes at 4°C.

11.5.6 Transfer the supernatants into clean tubes and discard the pellets.

11.5.7 Assay samples immediately or aliquot and store at -80°C. The sample protein concentration in the extract may be quantified using a protein assay.

11.5.8 Dilute samples to desired concentration in 1X Cell Extraction Buffer PTR.

11.5.9 Treat as described above.

11.6 Preparation of extracts from adherent cells by direct lysis (alternative protocol):

11.6.1 Remove growth media and rinse adherent cells 2 times in PBS.

- 11.6.2 Solubilize the cells by addition of chilled 1X Cell Extraction Buffer PTR directly to the plate (use 750 μ L - 1.5 mL 1X Cell Extraction Buffer PTR per confluent 15 cm diameter plate).
- 11.6.3 Scrape the cells into a microfuge tube and incubate the lysate on ice for 15 minutes.
- 11.6.4 Centrifuge at 18,000 x g for 20 minutes at 4°C.
- 11.6.5 Transfer the supernatants into clean tubes and discard the pellets.
- 11.6.6 Assay samples immediately or aliquot and store at -80°C. The sample protein concentration in the extract may be quantified using a protein assay.
- 11.6.7 Dilute samples to desired concentration in 1X Cell Extraction Buffer PTR.
- 11.6.8 Treat as described above.

11.7 Preparation of extracts from tissue homogenates:

- 11.7.1 Tissue lysates are typically prepared by homogenization of tissue that is first minced and thoroughly rinsed in PBS to remove blood (dounce homogenizer recommended).
- 11.7.2 Homogenize 100 to 200 mg of wet tissue in 500 μ L – 1 mL of chilled 1X Cell Extraction Buffer PTR. For lower amounts of tissue adjust volumes accordingly.
- 11.7.3 Incubate on ice for 20 minutes.
- 11.7.4 Centrifuge at 18,000 x g for 20 minutes at 4°C.
- 11.7.5 Transfer the supernatants into clean tubes and discard the pellets.
- 11.7.6 Assay samples immediately or aliquot and store at -80°C. The sample protein concentration in the extract may be quantified using a protein assay.
- 11.7.7 Dilute samples to desired concentration in 1X Cell Extraction Buffer PTR.
- 11.7.8 Treat as described above.

12. Plate Preparation

- The 96 well plate strips included with this kit are supplied ready to use. It is not necessary to rinse the plate prior to adding reagents.
- Unused plate strips should be immediately returned to the foil pouch containing the desiccant pack, resealed and stored at 4°C.
- For each assay performed, a minimum of two wells must be used as the zero control.
- For statistical reasons, we recommend each sample should be assayed with a minimum of two replicates (duplicates).
- Differences in well absorbance or “edge effects” have not been observed with this assay.

13. Assay Procedure

- Equilibrate all materials and prepared reagents to room temperature prior to use.
 - We recommend that you assay all standards, controls and samples in duplicate.
- 13.1 Prepare all reagents, working standards, and samples as directed in the previous sections.
 - 13.2 Remove excess microplate strips from the plate frame, return them to the foil pouch containing the desiccant pack, reseal and return to 4°C storage.
 - 13.3 Add 50 µL of all sample or standard to appropriate wells.
 - 13.4 Add 50 µL of the Antibody Cocktail to each well.
 - 13.5 Seal the plate and incubate for 1 hour at room temperature on a plate shaker set to 400 rpm.
 - 13.6 Wash each well with 3 x 350 µL 1X Wash Buffer PT. Wash by aspirating or decanting from wells then dispensing 350 µL 1X Wash Buffer PT into each well. Wash Buffer PT should remain in wells for at least 10 seconds. Complete removal of liquid at each step is essential for good performance. After the last wash invert the plate and tap gently against clean paper towels to remove excess liquid.
 - 13.7 Add 100 µL of TMB Development Solution to each well and incubate for 10 minutes in the dark on a plate shaker set to 400 rpm.

Given variability in laboratory environmental conditions, optimal incubation time may vary between 5 and 20 minutes.

Note: The addition of Stop Solution will change the color from blue to yellow and enhance the signal intensity about 3X. To avoid signal saturation, proceed to the next step before the high concentration of the standard reaches a blue color of O.D.600 equal to 1.0.
 - 13.8 Add 100 µL of Stop Solution to each well. Shake plate on a plate shaker for 1 minute to mix. Record the OD at 450 nm. This is an endpoint reading.
 - 13.9 Alternative to 13.7 – 13.8: Instead of the endpoint reading at 450 nm, record the development of TMB Substrate kinetically. Immediately after addition of TMB Development Solution begin recording the blue color development with elapsed

time in the microplate reader prepared with the following settings:

Mode	Kinetic
Wavelength:	600 nm
Time:	up to 20 min
Interval:	20 sec - 1 min
Shaking:	Shake between readings

Δ Note: that an endpoint reading can also be recorded at the completion of the kinetic read by adding 100 μ L Stop Solution to each well and recording the OD at 450 nm.

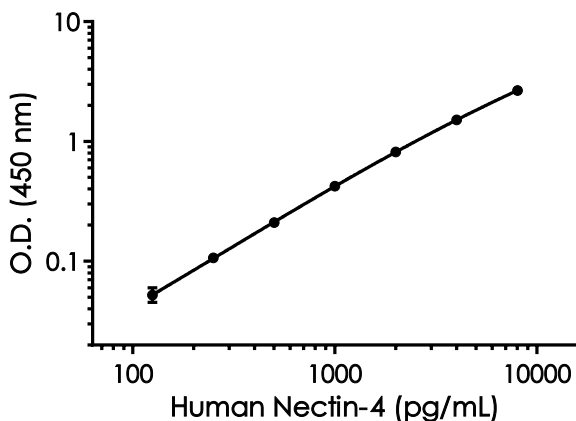
13.10 Analyze the data as described below.

14. Calculations

- 14.1 Calculate the average absorbance value for the blank control (zero) standards. Subtract the average blank control standard absorbance value from all other absorbance values.
- 14.2 **Create a standard curve** by plotting the average blank control subtracted absorbance value for each standard concentration (y-axis) against the target protein concentration (x-axis) of the standard. Use graphing software to draw the best smooth curve through these points to construct the standard curve.
 - Δ **Note:** Most microplate reader software or graphing software will plot these values and fit a curve to the data. A four parameter curve fit (4PL) is often the best choice; however, other algorithms (e.g. linear, semi-log, log/log, 4 parameter logistic) can also be tested to determine if it provides a better curve fit to the standard values.
- 14.3 Determine the concentration of the target protein in the sample by interpolating the blank control subtracted **absorbance values against the standard curve**. Multiply the resulting value by the appropriate sample dilution factor, if used, to obtain the concentration of target protein in the sample.
- 14.4 Samples generating absorbance values greater than that of the highest standard should be further diluted and reanalyzed. Similarly, samples which measure at an absorbance values less than that of the lowest standard should be retested in a less dilute form.

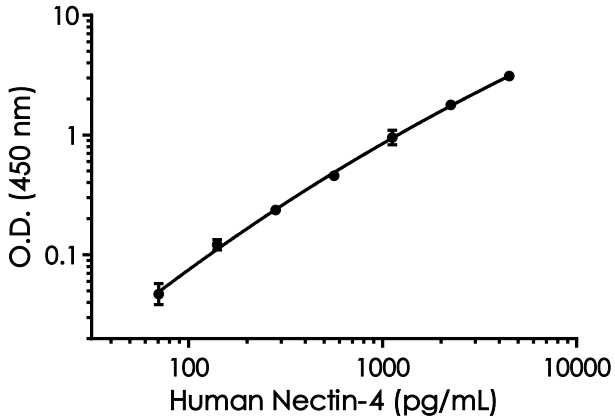
15. Typical Data

Typical standard curve – data provided for demonstration purposes only. A new standard curve must be generated for each assay performed.



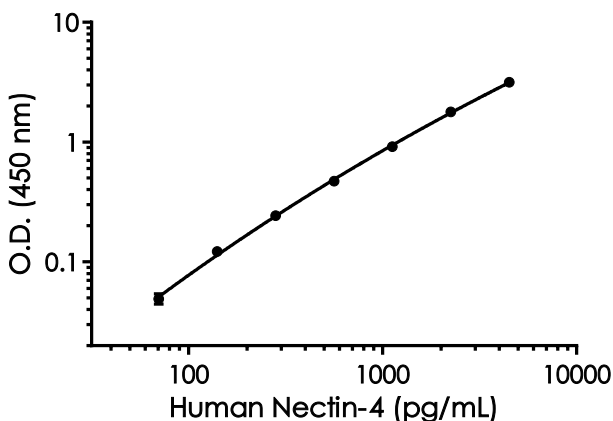
Standard Curve Measurements			
Concentration (pg/mL)	O.D 450 nm		Mean O.D
	1	2	
0	0.085	0.083	0.084
125	0.150	0.139	0.144
250	0.195	0.202	0.199
500	0.291	0.314	0.303
1,000	0.513	0.516	0.515
2,000	0.901	0.919	0.910
4,000	1.558	1.652	1.605
8,000	2.734	2.777	2.755

Figure 1. Example of human Nectin-4 standard curve in Sample Diluent 25BS + Enhancer. The Nectin-4 standard curve was prepared as described in Section 10. Raw data values are shown in the table. Background-subtracted data values (mean +/- SD) are graphed.



Standard Curve Measurements			
Concentration (pg/mL)	O.D 450 nm		Mean O.D
	1	2	
0	0.092	0.074	0.083
70.31	0.126	0.140	0.133
140.63	0.199	0.216	0.208
281.25	0.310	0.335	0.323
562.50	0.534	0.552	0.543
1,125	1.139	0.950	1.045
2,250	1.870	1.871	1.871
4,500	3.185	3.212	3.199

Figure 2. Example of human Nectin-4 standard curve in Sample Diluent NS + Enhancer. The Nectin-4 standard curve was prepared as described in Section 10. Raw data values are shown in the table. Background-subtracted data values (mean +/- SD) are graphed.



Standard Curve Measurements			
Concentration (pg/mL)	O.D 450 nm		Mean O.D
	1	2	
0	0.070	0.080	0.075
70.31	0.127	0.134	0.130
140.63	0.203	0.203	0.203
281.25	0.313	0.335	0.324
562.50	0.544	0.564	0.554
1,125	0.996	0.993	0.995
2,250	1.876	1.852	1.864
4,500	3.207	3.278	3.243

Figure 3. Example of human Nectin-4 standard curve in 1X Cell Extraction Buffer PTR. The Nectin-4 standard curve was prepared as described in Section 10. Raw data values are shown in the table. Background-subtracted data values (mean +/- SD) are graphed.

16. Typical Sample Values

SENSITIVITY –

The MDD was determined by calculating the mean of zero standard replicates and adding 2 standard deviations then extrapolating the corresponding concentration.

Sample Diluent Buffer	n=	Minimal Detectable Dose
Sample Diluent 25BS + Enhancer	21	98.62 pg/mL
Sample Diluent NS + Enhancer	16	45.53 pg/mL
1X Cell Extraction Buffer PTR	22	50.48 pg/mL

RECOVERY –

Three concentrations of Nectin-4 recombinant protein were spiked in duplicate to the indicated biological matrix to evaluate signal recovery in the working range of the assay.

Sample Type	Average % Recovery	Range (%)
Serum (50%)	89	82 – 98
Plasma – Heparin (50%)	87	82 – 94
OVCAR-3 cell culture supernatant (50%)	93	89 – 99
Urine (5%)	89	85 – 98
MCF7 Cell Extract (31.25 µg/mL)	107	104 – 110

Linearity of Dilution

Linearity of dilution is determined based on interpolated values from the standard curve. Linearity of dilution defines a sample concentration interval in which interpolated target concentrations are directly proportional to sample dilution.

Recombinant Nectin-4 was spiked into the following biological samples and diluted in a 2-fold dilution series in Sample Diluent 25BS + Enhancer.

Dilution Factor	Interpolated value	50% Human Serum	50% Human Plasma (Heparin)
Undiluted	pg/mL	3,328	3,277
	% Expected value	100	100
2	pg/mL	1,745	1,684
	% Expected value	105	103
4	pg/mL	827	976
	% Expected value	99	119
8	pg/mL	407	477
	% Expected value	98	116
16	pg/mL	NL	241
	% Expected value	NL	118

NL – Non-Linear

50% pooled serum and plasma (heparin) samples from healthy donors was measured in duplicate. All values were below the detectable range of the assay.

50% serum from ten individual healthy human female donors was measured in duplicate. One donor sample measured a mean Nectin-4 concentration of 332.14 pg/ml. All other samples measured below the detectable range of the assay.

Native Nectin-4 was measured in the following biological samples in a 2-fold dilution series. Sample dilutions are made in Sample Diluent NS + Enhancer.

Dilution Factor	Interpolated value	50% Human pooled sex urine
Undiluted	pg/mL	3,464
	% Expected value	100
2	pg/mL	1,776
	% Expected value	103
4	pg/mL	943
	% Expected value	109
8	pg/mL	469
	% Expected value	108
16	pg/mL	239
	% Expected value	110

Recombinant Nectin-4 was spiked into the following biological sample and diluted in a 2-fold dilution series in Sample Diluent NS + Enhancer.

Dilution Factor	Interpolated value	50% OVCAR-3 Supernatant
Undiluted	pg/mL	2,165
	% Expected value	100
2	pg/mL	1,362
	% Expected value	104
4	pg/mL	702
	% Expected value	107
8	pg/mL	362
	% Expected value	111
16	pg/mL	166
	% Expected value	102

50% OVCAR-3 supernatant samples were measured in duplicate. Corrected for dilution, the mean Nectin-4 concentration was determined to be 403.64 pg/mL.

Native Nectin-4 was measured in the following biological sample in a 2-fold dilution series. Sample dilutions are made in 1X Cell Extraction Buffer PTR.

Dilution Factor	Interpolated value	62.50 µg/mL MCF7 extract
Undiluted	pg/mL	1,329
	% Expected value	100
2	pg/mL	730
	% Expected value	110
4	pg/mL	361
	% Expected value	109
8	pg/mL	167
	% Expected value	101
16	pg/mL	102
	% Expected value	122

PRECISION –

Mean coefficient of variations of interpolated values of Nectin-4 from one concentration of MCF7 cell culture extract within the working range of the assay.

	Intra-Assay	Inter-Assay
n =	8	3
CV(%)	4.5	6.6

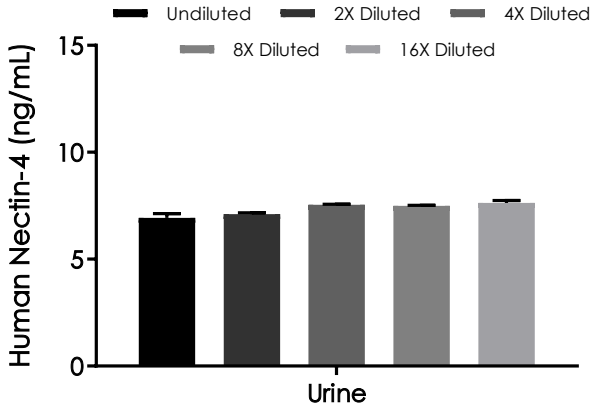


Figure 4. Interpolated concentrations of native Nectin-4 in human pooled sex urine samples. The concentrations of Nectin-4 were measured in duplicates, interpolated from the Nectin-4 standard curves and corrected for sample dilution. Undiluted samples are as follows: urine 50%. The interpolated dilution factor corrected values are plotted (mean +/- SD, n=2). The mean Nectin-4 concentration was determined to be 7.34 ng/mL in urine.

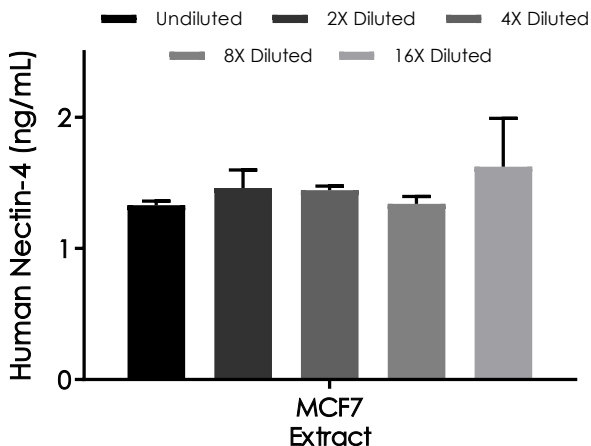


Figure 5. Interpolated concentrations of native Nectin-4 in human MCF7 based on a 62.50 $\mu\text{g/mL}$ extract load. The concentrations of Nectin-4 were measured in duplicate and interpolated from the Nectin-4 standard curve and corrected for sample dilution. The interpolated dilution factor corrected values are plotted (mean \pm SD, $n=2$). The mean Nectin-4 concentration was determined to be 1.44 ng/mL in MCF7 cell culture extract.

17. Assay Specificity

This kit recognizes both native and recombinant human Nectin-4 protein in serum, plasma (heparin), cell and tissue culture supernatant, urine, and cell and tissue extract samples only.

Milk and saliva samples have not been tested with this kit.

This kit is incompatible with plasma samples collected using citrate or EDTA.

18. Species Reactivity

This kit recognizes human Nectin-4 protein.

No signal was observed in 50% pooled serum samples from the following species:

- Human
- Mouse
- Rat
- Cow

Please contact our Technical Support team for more information.

19. Troubleshooting

Problem	Reason	Solution
Difficulty pipetting lysate; viscous lysate.	Genomic DNA solubilized	Prepare 1X Cell Extraction Buffer PTR (without enhancer). Add enhancer to lysate after extraction.
Poor standard curve	Inaccurate Pipetting	Check pipettes
	Improper standard dilution	Prior to opening, briefly spin the stock standard tube and dissolve the powder thoroughly by gentle mixing
Low Signal	Incubation times too brief	Ensure sufficient incubation times; increase to 2 or 3 hour standard/sample incubation
	Inadequate reagent volumes or improper dilution	Check pipettes and ensure correct preparation
	Incubation times with TMB too brief	Ensure sufficient incubation time until blue color develops prior addition of Stop solution
Large CV	Plate is insufficiently washed	Review manual for proper wash technique. If using a plate washer, check all ports for obstructions.
	Contaminated wash buffer	Prepare fresh wash buffer
Low sensitivity	Improper storage of the ELISA kit	Store your reconstituted standards at -80°C, all other assay components 4°C. Keep TMB Development Solution protected from light.
Precipitate in Diluent	Precipitation and/or coagulation of components within the Diluent.	Precipitate can be removed by gently warming the Diluent to 37°C.

20. Notes

Technical Support

Copyright © 2023 Abcam, All Rights Reserved. The Abcam logo is a registered trademark. All information / detail is correct at time of going to print.

For all technical or commercial enquiries please go to:

www.abcam.com/contactus

www.abcam.cn/contactus (China)

www.abcam.co.jp/contactus (Japan)