

Version 1b Last updated 6 August 2025

ab279724

Human Thrombin Antithrombin Complex total antigen assay ELISA kit

View Human Thrombin Antithrombin Complex total antigen assay ELISA kit datasheet:

www.abcam.com/ab279724

(use www.abcam.cn/ab279724 for China, or www.abcam.co.jp/ab279724 for Japan)

For the quantitative determination of total Human TAT complex total antigen in human plasma and serum.

This product is for research use only and is not intended for diagnostic use.

Table of Contents

1. Overview	1
2. Protocol Summary	2
3. Precautions	3
4. Storage and Stability	3
5. Limitations	4
6. Materials Supplied	4
7. Materials Required, Not Supplied	5
8. Technical Hints	5
9. Reagent Preparation	6
10. Sample Preparation	7
11. Sample Dilution	7
12. Preparation of Standards	8
13. Assay Procedure	9
14. Typical Results	11
15. Performance Characteristics	12
16. Specificity	12
17. Notes	13
Technical Support	14

1. Overview

Human Thrombin Antithrombin (TAT) Complex total antigen assay ELISA kit is intended for the quantitative determination of the covalent complex of thrombin and its inhibitor antithrombin III in human plasma and serum.

Human TAT Complex will bind to the affinity purified Anti-Human Thrombin capture antibody coated on the microtiter plate. After appropriate washing steps, monoclonal Anti-Human Antithrombin primary antibody binds to the TAT Complex captured on the plate. Excess antibody is washed away and bound monoclonal antibody is reacted with the secondary antibody conjugated to HRP. Following an additional washing step, TMB substrate is used for color development at 450nm. A standard calibration curve is prepared along with the samples to be measured using dilutions of Human TAT complex. Color development is proportional to the concentration of TAT complex in the samples.

2. Protocol Summary

Prepare all reagents, samples, and standards as instructed.



Add 100 μ L Standard or Sample to appropriate wells and shake plate at 300 rpm for 30 mins. Wash wells three times with 300 μ L wash buffer. Remove excess wash by gently tapping plate on paper towel.



Add 100 μ L of Primary Antibody to each well and shake plate at 300 rpm for 30 mins. Wash wells three times with 300 μ L wash buffer. Remove excess wash by gently tapping plate on paper towel.



Add 100 μ L Secondary Antibody to each well and shake plate at 300 rpm for 30 mins. Wash wells three times with 300 μ L wash buffer. Remove excess wash by gently tapping plate on paper towel.



Add 100 μ L TMB Substrate Solution to each well and shake plate for 2-10 mins.



Stop reaction with 50 μ L H_2SO_4 or HCl stop solution, then measure the absorbance in all wells at 450nm.

3. Precautions

Please read these instructions carefully prior to beginning the assay.

- All kit components have been formulated and quality control tested to function successfully as a kit.
- We understand that, occasionally, experimental protocols might need to be modified to meet unique experimental circumstances. However, we cannot guarantee the performance of the product outside the conditions detailed in this protocol booklet.
- Reagents should be treated as possible mutagens and should be handled with care and disposed of properly. Please review the Safety Datasheet (SDS) provided with the product for information on the specific components.
- Observe good laboratory practices. Gloves, lab coat, and protective eyewear should always be worn. Never pipet by mouth. Do not eat, drink or smoke in the laboratory areas.
- All biological materials should be treated as potentially hazardous and handled as such. They should be disposed of in accordance with established safety procedures.

4. Storage and Stability

Store kit at +4°C immediately upon receipt. Kit has a storage time of 1 year from receipt, providing components have not been reconstituted.

Reconstituted standards and primary antibody may be stored at -80°C for later use. Do not freeze the standard and primary antibody more than once.

Refer to list of materials supplied for storage conditions of individual components.

5. Limitations

- Assay kit intended for research use only. Not for use in diagnostic procedures.
- Do not mix or substitute reagents or materials from other kit lots or vendors. Kits are QC tested as a set of components and performance cannot be guaranteed if utilized separately or substituted.

6. Materials Supplied

Item	Quantity	Storage Condition (before reconstitution)
Anti-Human Thrombin ELISA Plate	1 x 96 tests	+4°C
10X Wash Buffer	1 x 50 mL	+4°C
Human TAT complex Standard Lyophilized Vial	1 vial	+4°C
Anti-Human Antithrombin Primary Antibody Lyophilized Vial	1 vial	+4°C
Anti-Mouse HRP-conjugated Secondary Antibody	1 vial	+4°C
TMB Substrate	1 x 10 mL	+4°C

7. Materials Required, Not Supplied

These materials are not included in the kit, but will be required to successfully perform this assay:

- Microplate plate shaker capable of 300 rpm uniform horizontal circular movement
- Manifold dispenser/aspirator or automated microplate washer
- Microplate reader capable of measuring absorbance at 450 nm
- Pipettes and pipette tips
- Deionized or distilled water
- Polypropylene tubes for dilution of standard
- Paper towels or laboratory wipes
- 1N H₂SO₄ or 1N HCl
- Bovine Serum Albumin Fraction V (BSA)
- Tris(hydroxymethyl)aminomethane (Tris)
- Sodium Chloride (NaCl)

8. Technical Hints

- Samples generating values higher than the highest standard should be further diluted in the appropriate sample dilution buffers.
- Avoid foaming or bubbles when mixing or reconstituting components.
- Avoid cross contamination of samples or reagents by changing tips between sample, standard and reagent additions.
- Ensure plates are properly sealed or covered during incubation steps.
- Complete removal of all solutions and buffers during wash steps is necessary to minimize background.
- All samples should be mixed thoroughly and gently.
- Avoid multiple freeze/thaw of samples.
- Incubate ELISA plates on a plate shaker during all incubation steps.

9. Reagent Preparation

- Equilibrate all reagents to room temperature (18-25°C) prior to use.
- Prepare only as much reagent as is needed on the day of the experiment.

9.1 Primary Antibody

Reconstitute primary antibody by adding 10 mL of Blocking Buffer directly to the vial and agitate gently to completely dissolve contents. Reconstituted Primary Antibody may be stored at -80°C for later use. Do not freeze the Primary Antibody more than once.

9.2 Secondary Antibody

Briefly centrifuge vial before opening. Dilute 2 µL of HRP-conjugated Secondary Antibody into 10 mL Blocking Buffer.

9.3 TBS buffer:

Prepare 0.1M Tris, 0.15M NaCl, pH 7.4.

9.4 Blocking buffer (BB):

Prepare 3% BSA (w/v) in TBS.

9.5 1X Wash Buffer:

Dilute 50 mL of 10X wash buffer concentrate with 450 mL of deionized water.

10. Sample Preparation

- Collect plasma using EDTA, heparin or citrate as anticoagulant.
- Centrifuge for 15 mins at 1000 x g within 30 mins of collection.
- Assay immediately or aliquot and store at $\leq -20^{\circ}\text{C}$. Avoid repeated freezing and thawing.

11. Sample Dilution

- The assay measures total Human TAT complex antigen in the 1-1000 ng/ml range.
- Samples giving human TAT complex antigen levels above 1000 ng/mL should be diluted in blocking buffer before use.
- Normal human plasma samples should be applied to the plate without dilution.
- A 1:500-1:1000 dilution for normal human serum is suggested for best results.

12. Preparation of Standards

- Dilutions for the standard curve and zero standard must be made and applied to the plate immediately.

12.1 Reconstitute standard by adding 1 mL of Blocking Buffer directly to the vial and agitate gently to completely dissolve contents. This will result in a 1000 ng/mL standard.

Δ Note: Reconstituted standards may be stored at -80°C for later use. Do not freeze the standard more than once.

12.2 Then dilute using Blocking Buffer (BB) according to the table below:

Human TAT complex concentration (ng/ml)	Dilutions
1000	From standard vial
500	500µL (BB) + 500µL (1000 ng/mL)
250	500µL (BB) + 500µL (500 ng/mL)
100	600µL (BB) + 400µL (250 ng/mL)
50	500µL (BB) + 500µL (100 ng/mL)
25	500µL (BB) + 500µL (50 ng/mL)
10	600µL (BB) + 400µL (25 ng/mL)
5	500µL (BB) + 500µL (10 ng/mL)
2	500µL (BB) + 400µL (5 ng/mL)
1	500µL (BB) + 500µL (2 ng/mL)
0	500µL (BB) Zero point to determine background

13. Assay Procedure

- Equilibrate all materials and prepared reagents to room temperature prior to use.
- Vigorously shake plate (300 rpm) at each step of the assay.

13.1 Standard and Unknown Addition.

- 13.1.1 Remove microtiter plate from bag and add 100 μ L Human TAT complex standards (in duplicate) and unknowns to wells.
- 13.1.2 Carefully record position of standards and unknowns. Shake plate at 300 rpm for 30 mins.
- 13.1.3 Wash wells three times with 300 μ L wash buffer. Remove excess wash by gently tapping plate on paper towel.
Δ Note: The assay measures Human TAT complex antigen in the 1-1000 ng/mL range. Samples giving human TAT complex antigen levels above 1000 ng/mL should be diluted in blocking buffer before use. A 1:500 - 1:1000 dilution for normal human serum is suggested for best results.

13.2 Primary Antibody Addition.

- 13.2.1 Reconstitute primary antibody by adding 10 mL of Blocking Buffer directly to the vial and agitate gently to completely dissolve contents (See Section 9.1).
- 13.2.2 Add 100 μ L to all wells. Shake plate at 300 rpm for 30 mins.
- 13.2.3 Wash wells three times with 300 μ L wash buffer. Remove excess wash by gently tapping plate on paper towel.

13.3 Secondary Antibody Addition.

- 13.3.1 Briefly centrifuge vial before opening. Dilute 2 μ L of HRP-conjugated Secondary Antibody into 10 mL Blocking Buffer (See Section 9.2).
- 13.3.2 Add 100 μ L to all wells. Shake plate at 300 rpm for 30 mins.
- 13.3.3 Wash wells three times with 300 μ L wash buffer. Remove excess wash by gently tapping plate on paper towel.

13.4 Substrate Incubation.

- 13.4.1 Add 100 μ L TMB substrate to all wells and shake plate for 2 to 10 mins. Substrate will change from colorless to different strengths of blue.
- 13.4.2 Quench reaction by adding 50 μ L of 1N H₂SO₄ or HCl stop solution to all wells when samples are visually in the same range as the standards. Add stop solution to wells in the same

order as substrate, upon which color will change from blue to yellow. Mix thoroughly by gently shaking the plate.

13.5 Measurement.

- 13.5.1 Set the absorbance at 450 nm in a microtiter plate spectrophotometer.
- 13.5.2 Measure the absorbance in all wells at 450 nm.
- 13.5.3 Subtract zero point from all standards and unknowns to determine corrected absorbance (A_{450}).

13.6 Calculation of Results.

- 13.6.1 Plot A_{450} against the amount of TAT complex in the standards.
- 13.6.2 Fit a straight line through the linear points of the standard curve using a linear fit procedure if unknowns appear on the linear portion of the standard curve.
- 13.6.3 Alternatively, create a standard curve by analyzing the data using a software program capable of generating a four parameter logistic (4PL) curve fit.
- 13.6.4 The amount of TAT complex in the unknowns can be determined from this curve.
- 13.6.5 If samples have been diluted, the calculated concentration must be multiplied by the dilution factor.

14. Typical Results

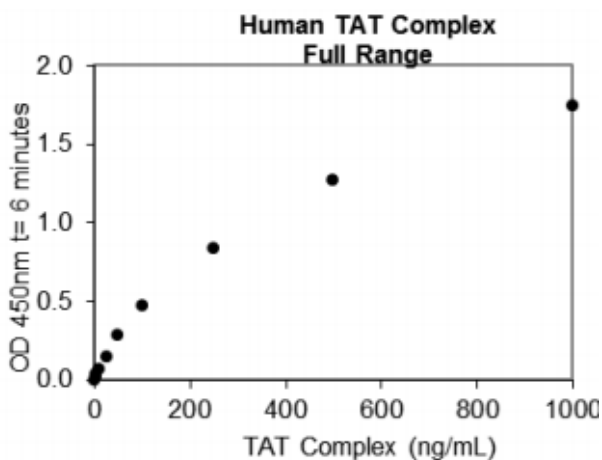


Fig 1. A typical standard curve for Human TAT complex (full range). Example only.

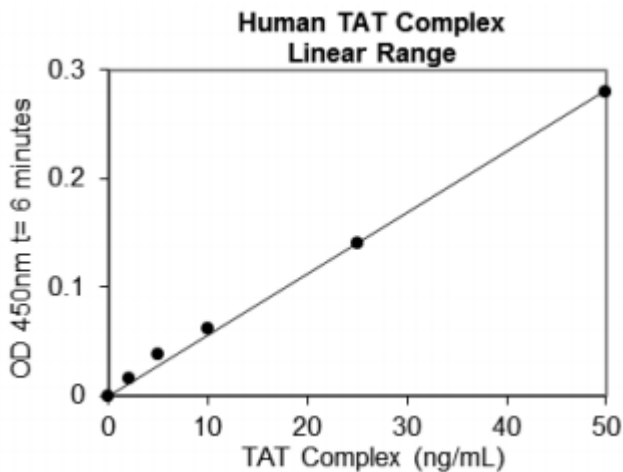


Fig 2. A typical standard curve for Human TAT complex (linear range). Example only.

15. Performance Characteristics

Expected Values:

Concentration of TAT complex in normal human plasma was found to be 2.1 ng/mL and was increased in deep vein thrombosis (9.4 ng/mL) and disseminated intravascular coagulation (15.8 ng/mL).

Sensitivity:

The minimum detectable dose (MDD) was determined by adding two standard deviations to the mean optical density value of twenty zero standard replicates (range OD450: 0.099-0.117) and calculating the corresponding concentration. The MDD was 0.718 ng/mL.

Sample Values:

Samples were evaluated for the presence of the antigen.

Sample	Dilution	Mean ($\mu\text{g/mL}$)
Citrate Plasma	Undiluted	0.01
Serum	1:320	52
	1:640	53

16. Specificity

This assay recognizes natural human TAT complex.

Natural human thrombin, prothrombin and antithrombin III were assayed for cross-reactivity. No significant cross-reactivity was observed

17. Notes

Technical Support

Copyright © 2025 Abcam, All Rights Reserved. The Abcam logo is a registered trademark. All information / detail is correct at time of going to print.

For all technical or commercial enquiries please go to:

www.abcam.com/en-us/contact-us

www.abcam.cn/contactus (China)

www.abcam.co.jp/contactus (Japan)