

Version 2 Last updated 3 November 2021

ab283552 Human TMPRSS2 SimpleStep ELISA[®] Kit

For the quantitative measurement of TMPRSS2 in human serum, plasma, urine, cell culture supernatants, cell culture extract and tissue culture extract.

This product is for research use only and is not intended for diagnostic use.

Table of Contents

1. Overview	1
2. Protocol Summary	2
3. Precautions	3
4. Storage and Stability	3
5. Limitations	4
6. Materials Supplied	4
7. Materials Required, Not Supplied	5
8. Technical Hints	5
9. Reagent Preparation	7
10. Standard Preparation	8
11. Sample Preparation	9
12. Plate Preparation	11
13. Assay Procedure	12
14. Calculations	14
15. Typical Data	15
16. Typical Sample Values	17
17. Assay Specificity	23
18. Species Reactivity	23
19. Troubleshooting	24
20. Notes	25
Technical Support	26

1. Overview

Human TMPRSS2 *in vitro* SimpleStep ELISA[®] (Enzyme-Linked Immunosorbent Assay) kit is designed for the quantitative measurement of TMPRSS2 protein in human serum, plasma, urine, cell culture supernatants, cell culture extract and tissue culture extract.

The SimpleStep ELISA[®] employs an affinity tag labeled capture antibody and a reporter conjugated detector antibody which immunocapture the sample analyte in solution. This entire complex (capture antibody/analyte/detector antibody) is in turn immobilized via immunoaffinity of an anti-tag antibody coating the well. To perform the assay, samples or standards are added to the wells, followed by the antibody mix. After incubation, the wells are washed to remove unbound material. TMB Development Solution is added and during incubation is catalyzed by HRP, generating blue coloration. This reaction is then stopped by addition of Stop Solution completing any color change from blue to yellow. Signal is generated proportionally to the amount of bound analyte and the intensity is measured at 450 nm. Optionally, instead of the endpoint reading, development of TMB can be recorded kinetically at 600 nm.

Human TMPRSS2 is a plasma membrane-anchored serine protease that participates in proteolytic cascades involving physiological functions of the prostate. TMPRSS2 is understood to facilitate human coronaviruses SARS-CoV and SARS-CoV-2 infections via two independent mechanisms; Proteolytic cleavage of ACE2 receptor which promotes viral uptake, and cleavage of coronavirus spike glycoproteins which activates the glycoprotein for host cell entry. TMPRSS2 also proteolytically cleaves and activates human coronavirus EMC (MERS), and the fusion glycoproteins F0 of Sendai virus, human metapneumovirus, human parainfluenza 1, 2, 3, 4a and 4b viruses. TMPRSS2 is essential for spread and pathogenesis of influenza A virus (strains H1N1, H3N2 and H7N9) and is involved in proteolytic cleavage and activation of hemagglutinin protein which is essential for viral infectivity. The antibodies in this product were raised to a portion of the extracellular region excluding the peptidase domain. The standard protein in this product is approximately 30% of full length TMPRSS2.

2. Protocol Summary

Prepare all reagents, samples, and standards as instructed



Add 50 μ L standard or sample to appropriate wells



Add 50 μ L Antibody Cocktail to all wells



Incubate at room temperature for 1 hour



Aspirate and wash each well three times with 350 μ L 1X Wash Buffer
PT



Add 100 μ L TMB Development Solution to each well and incubate
for 10 minutes.



Add 100 μ L Stop Solution and read OD at 450 nm

3. Precautions

Please read these instructions carefully prior to beginning the assay.

- All kit components have been formulated and quality control tested to function successfully as a kit.
- We understand that, occasionally, experimental protocols might need to be modified to meet unique experimental circumstances. However, we cannot guarantee the performance of the product outside the conditions detailed in this protocol booklet.
- Reagents should be treated as possible mutagens and should be handled with care and disposed of properly. Please review the Safety Datasheet (SDS) provided with the product for information on the specific components.
- Observe good laboratory practices. Gloves, lab coat, and protective eyewear should always be worn. Never pipet by mouth. Do not eat, drink or smoke in the laboratory areas.
- All biological materials should be treated as potentially hazardous and handled as such. They should be disposed of in accordance with established safety procedures.

4. Storage and Stability

Store kit at +4°C immediately upon receipt. Kit has a storage time of 1 year from receipt, providing components have not been reconstituted.

Refer to list of materials supplied for storage conditions of individual components.

5. Limitations

- Assay kit intended for research use only. Not for use in diagnostic procedures.
- Do not mix or substitute reagents or materials from other kit lots or vendors. Kits are QC tested as a set of components and performance cannot be guaranteed if utilized separately or substituted.

6. Materials Supplied

Item	Quantity	Storage Condition
Human Tmprss2 Capture Antibody 10X	600 µL	+4°C
Human Tmprss2 Detector Antibody 10X	600 µL	+4°C
Human Tmprss2 Lyophilized Recombinant Protein	2 Vials	+4°C
Antibody Diluent 4BI	6 mL	+4°C
Cell Extraction Buffer PTR 5X	10 mL	+4°C
Cell Extraction Enhancer Solution 50X	1 mL	+4°C
Sample Diluent NS	12 mL	+4°C
Wash Buffer PT 10X	20 mL	+4°C
TMB Development Solution	12 mL	+4°C
Stop Solution	12 mL	+4°C
SimpleStep Pre-Coated 96-Well Microplate	96 Wells	+4°C
Plate Seal	1	+4°C

7. Materials Required, Not Supplied

These materials are not included in the kit, but will be required to successfully perform this assay:

- Microplate reader capable of measuring absorbance at 450 or 600 nm.
- Method for determining protein concentration (BCA assay recommended).
- Deionized water.
- Multi- and single-channel pipettes.
- Tubes for standard dilution.
- Plate shaker for all incubation steps.
- Optional: Phenylmethylsulfonyl Fluoride (PMSF) (or other protease inhibitors).

8. Technical Hints

- Samples generating values higher than the highest standard should be further diluted in the appropriate sample dilution buffers.
- Avoid foaming or bubbles when mixing or reconstituting components.
- Avoid cross contamination of samples or reagents by changing tips between sample, standard and reagent additions.
- Ensure plates are properly sealed or covered during incubation steps.
- Complete removal of all solutions and buffers during wash steps is necessary to minimize background.
- As a guide, typical ranges of sample concentration for commonly used sample types are shown below in Sample Preparation (section 11).
- All samples should be mixed thoroughly and gently.
- Avoid multiple freeze/thaw of samples.
- Incubate ELISA plates on a plate shaker during all incubation steps.
- When generating positive control samples, it is advisable to change pipette tips after each step.

- The provided Cell Extraction Enhancer Solution 50X may precipitate when stored at + 4°C. To dissolve, warm briefly at + 37°C and mix gently. The Cell Extraction Enhancer Solution 50X can be stored at room temperature to avoid precipitation.
- **To avoid high background always add samples or standards to the well before the addition of the antibody cocktail.**
- **This kit is sold based on number of tests. A 'test' simply refers to a single assay well. The number of wells that contain sample, control or standard will vary by product. Review the protocol completely to confirm this kit meets your requirements. Please contact our Technical Support staff with any questions.**

9. Reagent Preparation

- Equilibrate all reagents to room temperature (18-25°C) prior to use. The kit contains enough reagents for 96 wells. The sample volumes below are sufficient for 48 wells (6 x 8-well strips); adjust volumes as needed for the number of strips in your experiment.
- Prepare only as much reagent as is needed on the day of the experiment. Capture and Detector Antibodies have only been tested for stability in the provided 10X formulations.

9.1 1X Cell Extraction Buffer PTR (For cell and tissue extracts only):

Prepare 1X Cell Extraction Buffer PTR by diluting Cell Extraction Buffer PTR 5X and 50X Cell Extraction Enhancer Solution to 1X with deionized water. To make 10 mL 1X Cell Extraction Buffer PTR combine 7.8 mL deionized water, 2 mL Cell Extraction Buffer PTR 5X and 200 μ L Cell Extraction Enhancer Solution 50X. Mix thoroughly and gently. If required protease inhibitors can be added.

Alternative – Enhancer may be added to 1X Cell Extraction Buffer PTR after extraction of cells or tissue. Refer to note in the Troubleshooting section.

9.2 1X Wash Buffer PT:

Prepare 1X Wash Buffer PT by diluting Wash Buffer PT 10X with deionized water. To make 50 mL 1X Wash Buffer PT combine 5 mL Wash Buffer PT 10X with 45 mL deionized water. Mix thoroughly and gently.

9.3 Antibody Cocktail:

Prepare Antibody Cocktail by diluting the capture and detector antibodies in Antibody Diluent 4BI. To make 3 mL of the Antibody Cocktail combine 300 μ L 10X Capture Antibody and 300 μ L 10X Detector Antibody with 2.4 mL Antibody Diluent 4BI. Mix thoroughly and gently.

10. Standard Preparation

- Always prepare a fresh set of standards for every use.
- Discard working standard dilutions after use as they do not store well.
- The following section describes the preparation of a standard curve for duplicate measurements (recommended).

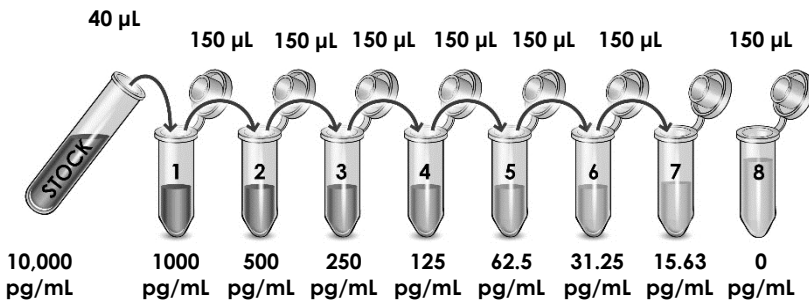
IMPORTANT: If the protein standard vial has a volume identified on the label, reconstitute the TMRSS2 by adding that volume of Diluent indicated on the label. Alternatively, if the vial has a mass identified, reconstitute the TMRSS2 standard by adding 500 μL Diluent.

10.1 For serum, plasma, and cell culture supernatant sample measurements, Reconstitute the TMRSS2 standard by adding Sample Diluent NS.

For **cell and tissue culture extract sample measurements** reconstitute the TMRSS2 standard by adding 1X Cell Extraction Buffer PTR.

Hold at room temperature for 10 minutes and mix gently. This is the 10,000 pg/mL **Stock Standard** Solution.

- 10.1.1 Label eight tubes, Standards 1– 8.
- 10.1.2 Add 360 μL of appropriate diluent (see step 10.1) into tube number 1 and 150 μL of appropriate diluent into numbers 2-8.
- 10.1.3 Use the Stock Standard to prepare the following dilution series. Standard #8 contains no protein and is the Blank control:



11. Sample Preparation

Typical Sample Dynamic Range	
Sample Type	Range
Serum*	≤25%
Plasma – Citrate*	≤25%
Plasma – EDTA*	≤25%
Plasma – Heparin*	≤50%
10F RPMI*	≤100%
Urine*	≤50%
Human Lung Tissue Extract	250 µg/ml – 2000 µg/ml
LNCaP Cell Extract	37.5 µg/ml – 300 µg/ml

*Based on spiked sample

11.1 Plasma:

Collect plasma using citrate, EDTA or heparin. Centrifuge samples at 2,000 x g for 10 minutes. Dilute samples at least 1:2 for Heparin and 1:4 for Citrate and EDTA into Sample Diluent NS and assay. Store un-diluted plasma samples at -20°C or below for up to 3 months. Avoid repeated freeze-thaw cycles.

11.2 Serum:

Samples should be collected into a serum separator tube. After clot formation, centrifuge samples at 2,000 x g for 10 minutes and collect serum. Dilute samples at least 1:4 into Sample Diluent NS and assay. Store un-diluted serum at -20°C or below. Avoid repeated freeze-thaw cycles.

11.3 Cell Culture Supernatants:

Centrifuge cell culture media at 2,000 x g for 10 minutes to remove debris. Collect supernatants and assay. Or dilute samples into Sample Diluent NS and assay. Store un-diluted samples at -20°C or below. Avoid repeated freeze-thaw cycles.

11.4 Urine:

Centrifuge urine at 2,000 x g for 10 minutes to remove debris.

Dilute samples at least 1:2 into Sample Diluent NS and assay. Store un-diluted urine samples at -20°C or below. Avoid repeated freeze-thaw cycles.

11.5 Preparation of extracts from cell pellets:

- 11.5.1 Collect non-adherent cells by centrifugation or scrape to collect adherent cells from the culture flask. Typical centrifugation conditions for cells are 500 x g for 5 minutes at 4°C.
- 11.5.2 Rinse cells twice with PBS.
- 11.5.3 Solubilize pellet at 2×10^7 cell/mL in chilled 1X Cell Extraction Buffer PTR.
- 11.5.4 Incubate on ice for 20 minutes.
- 11.5.5 Centrifuge at 18,000 x g for 20 minutes at 4°C.
- 11.5.6 Transfer the supernatants into clean tubes and discard the pellets.
- 11.5.7 Assay samples immediately or aliquot and store at -80°C. The sample protein concentration in the extract may be quantified using a protein assay.
- 11.5.8 Dilute samples to desired concentration in 1X Cell Extraction Buffer PTR.

11.6 Preparation of extracts from tissue homogenates:

- 11.6.1 Tissue lysates are typically prepared by homogenization of tissue that is first minced and thoroughly rinsed in PBS to remove blood (dounce homogenizer recommended).
- 11.6.2 Homogenize 100 to 200 mg of wet tissue in 500 μ L – 1 mL of chilled 1X Cell Extraction Buffer PTR. For lower amounts of tissue adjust volumes accordingly.
- 11.6.3 Incubate on ice for 20 minutes.
- 11.6.4 Centrifuge at 18,000 x g for 20 minutes at 4°C.
- 11.6.5 Transfer the supernatants into clean tubes and discard the pellets.
- 11.6.6 Assay samples immediately or aliquot and store at -80°C. The sample protein concentration in the extract may be quantified using a protein assay.
- 11.6.7 Dilute samples to desired concentration in 1X Cell Extraction Buffer PTR.

12. Plate Preparation

- The 96 well plate strips included with this kit are supplied ready to use. It is not necessary to rinse the plate prior to adding reagents.
- Unused plate strips should be immediately returned to the foil pouch containing the desiccant pack, resealed and stored at 4°C.
- For each assay performed, a minimum of two wells must be used as the zero control.
- For statistical reasons, we recommend each sample should be assayed with a minimum of two replicates (duplicates).
- Differences in well absorbance or “edge effects” have not been observed with this assay.

13. Assay Procedure

- Equilibrate all materials and prepared reagents to room temperature prior to use.
- We recommend that you assay all standards, controls and samples in duplicate.

- 13.1** Prepare all reagents, working standards, and samples as directed in the previous sections.
- 13.2** Remove excess microplate strips from the plate frame, return them to the foil pouch containing the desiccant pack, reseal and return to 4°C storage.
- 13.3** Add 50 µL of all sample or standard to appropriate wells.
- 13.4** Add 50 µL of the Antibody Cocktail to each well.
- 13.5** Seal the plate and incubate for 1 hour at room temperature on a plate shaker set to 400 rpm.
- 13.6** Wash each well with 3 x 350 µL 1X Wash Buffer PT. Wash by aspirating or decanting from wells then dispensing 350 µL 1X Wash Buffer PT into each well. Wash Buffer PT should remain in wells for at least 10 seconds. Complete removal of liquid at each step is essential for good performance. After the last wash invert the plate and tap gently against clean paper towels to remove excess liquid.
- 13.7** Add 100 µL of TMB Development Solution to each well and incubate for 10 minutes in the dark on a plate shaker set to 400 rpm.

Given variability in laboratory environmental conditions, optimal incubation time may vary between 5 and 20 minutes.

Note: The addition of Stop Solution will change the color from blue to yellow and enhance the signal intensity about 3X. To avoid signal saturation, proceed to the next step before the high concentration of the standard reaches a blue color of O.D.600 equal to 1.0.

- 13.8** Add 100 µL of Stop Solution to each well. Shake plate on a plate shaker for 1 minute to mix. Record the OD at 450 nm. This is an endpoint reading.
- 13.9** Alternative to 13.7 – 13.8: Instead of the endpoint reading at 450 nm, record the development of TMB Substrate kinetically. Immediately after addition of TMB Development Solution begin recording the blue color development with elapsed time in the microplate reader prepared with the following settings:

Mode	Kinetic
Wavelength:	600 nm
Time:	up to 20 min
Interval:	20 sec - 1 min
Shaking:	Shake between readings

Δ Note: that an endpoint reading can also be recorded at the completion of the kinetic read by adding 100 μ L Stop Solution to each well and recording the OD at 450 nm.

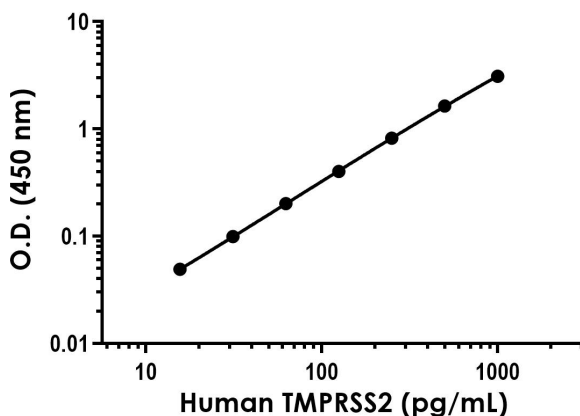
13.10 Analyze the data as described below.

14. Calculations

- 14.1 Calculate the average absorbance value for the blank control (zero) standards. Subtract the average blank control standard absorbance value from all other absorbance values.
- 14.2 **Create a standard curve** by plotting the average blank control subtracted absorbance value for each standard concentration (y-axis) against the target protein concentration (x-axis) of the standard. Use graphing software to draw the best smooth curve through these points to construct the standard curve.
 - Δ **Note:** Most microplate reader software or graphing software will plot these values and fit a curve to the data. A four parameter curve fit (4PL) is often the best choice; however, other algorithms (e.g. linear, semi-log, log/log, 4 parameter logistic) can also be tested to determine if it provides a better curve fit to the standard values.
- 14.3 Determine the concentration of the target protein in the sample by interpolating the blank control subtracted **absorbance values against the standard curve**. Multiply the resulting value by the appropriate sample dilution factor, if used, to obtain the concentration of target protein in the sample.
- 14.4 Samples generating absorbance values greater than that of the highest standard should be further diluted and reanalyzed. Similarly, samples which measure at an absorbance values less than that of the lowest standard should be retested in a less dilute form.

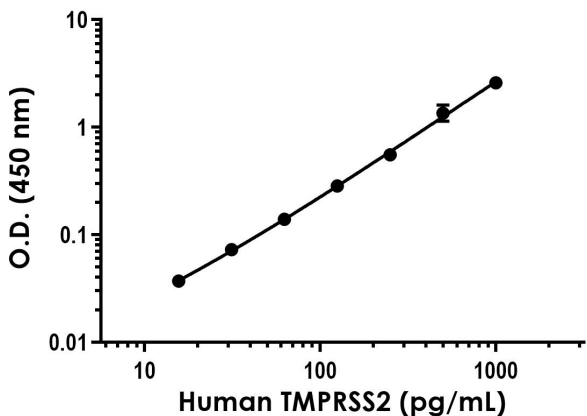
15. Typical Data

Typical standard curve – data provided for demonstration purposes only. A new standard curve must be generated for each assay performed.



Standard Curve Measurements			
Concentration (pg/mL)	O.D 450 nm		Mean O.D
	1	2	
0	0.057	0.057	0.057
15.63	0.107	0.105	0.106
31.25	0.158	0.154	0.156
62.5	0.260	0.257	0.259
125	0.468	0.451	0.459
250	0.937	0.824	0.881
500	1.724	1.656	1.690
1000	3.168	3.143	3.155

Figure 1. Example of human TMPRSS2 standard curve in Sample Diluent NS. The TMPRSS2 standard curve was prepared as described in Section 10. Raw data values are shown in the table. Background-subtracted data values (mean +/- SD) are graphed.



Standard Curve Measurements			
Concentration (pg/mL)	O.D 450 nm		Mean O.D
	1	2	
0	0.047	0.049	0.048
15.63	0.083	0.087	0.085
31.25	0.122	0.119	0.120
62.5	0.190	0.185	0.187
125	0.339	0.325	0.332
250	0.606	0.601	0.603
500	1.241	1.574	1.407
1000	2.702	2.576	2.639

Figure 2. Example of human TMPRSS2 standard curve in 1X Cell Extraction Buffer PTR. The TMPRSS2 standard curve was prepared as described in Section 10. Raw data values are shown in the table. Background-subtracted data values (mean +/- SD) are graphed.

16. Typical Sample Values

SENSITIVITY –

The MDD was determined by calculating the mean of zero standard replicates and adding 2 standard deviations then extrapolating the corresponding concentration.

Sample Diluent Buffer	n=	Minimal Detectable Dose
NS	24	4.27 pg/mL
Cell Extraction Buffer PTR	24	1.06 pg/mL

RECOVERY –

Three concentrations of human TMPRSS2 recombinant protein were spiked in duplicate to the indicated biological matrix to evaluate signal recovery in the working range of the assay.

Sample Type	Average % Recovery	Range (%)
25% NHS	91	83 - 96
25% Plasma (Citrate)	95	93 - 102
25% Plasma (EDTA)	92	87 - 95
50% Plasma (Heparin)	94	89 - 100
50% Cell Culture Media	109	106 - 112
50% Urine	104	96 - 112
250 µg/ml Human Lung Tissue	99	89 - 110
37.5 µg.ml LNCaP Cell Extract	108	96 - 117

*Media is DMEM containing 10% fetal calf serum RPMI 1640 containing 10% fetal calf serum.

Linearity of Dilution

Linearity of dilution is determined based on interpolated values from the standard curve. Linearity of dilution defines a sample concentration interval in which interpolated target concentrations are directly proportional to sample dilution.

Recombinant Tmprss2 was spiked into the following biological samples and diluted in a 2-fold dilution series in Sample Diluent NS.

Dilution Factor	Interpolated value	25% Human Serum	25% Human Plasma (Citrate)	25% Human Plasma (EDTA)	50% Human Plasma (Heparin)
Undiluted	pg/mL	194.0	197.18	203.56	334.16
	% Expected value	100	100	100	100
2	pg/mL	106.03	108.62	106.93	190.35
	% Expected value	109	110	105	114
4	pg/mL	52.3	55.41	58.25	99.09
	% Expected value	108	112	114	119
8	pg/mL	28.25	28.73	28.94	47.32
	% Expected value	116	117	114	113
16	pg/mL	NL	NL	NL	24.17
	% Expected value	NL	NL	NL	116

NL – Non-Linear

Recombinant TMPRSS2 was spiked into the following biological samples and diluted in a 2-fold dilution series in Sample Diluent NS.

Dilution Factor	Interpolated value	50% Human Urine	100% Cell Culture Media
Undiluted	pg/mL	512.44	987.45
	% Expected value	100	100
2	pg/mL	259.92	473.56
	% Expected value	101	96
4	pg/mL	125.47	254.4
	% Expected value	97	103
8	pg/mL	62.71	126.45
	% Expected value	97	102
16	pg/mL	31.75	58.53
	% Expected value	98	92

Native human TMPRSS2 was measured in the following biological samples and diluted in a 2-fold dilution series in 1X Cell Extraction Buffer PTR.

Dilution Factor	Interpolated value	2000 µg/ml Human lung tissue extract	300 µg/ml LNCaP cell extract
Undiluted	pg/mL	183.06	864.97
	% Expected value	100	100
2	pg/mL	88.05	427.26
	% Expected value	96	99
4	pg/mL	39.85	225.33
	% Expected value	87	104
8	pg/mL	18.61	127.69
	% Expected value	81	118

PRECISION –

Mean coefficient of variations of interpolated values of TMPRSS2 from a single concentration of LNCaP cell extract within the working range of the assay.

	Intra- Assay	Inter- Assay
n =	8	3
CV(%)	4.9	5.8

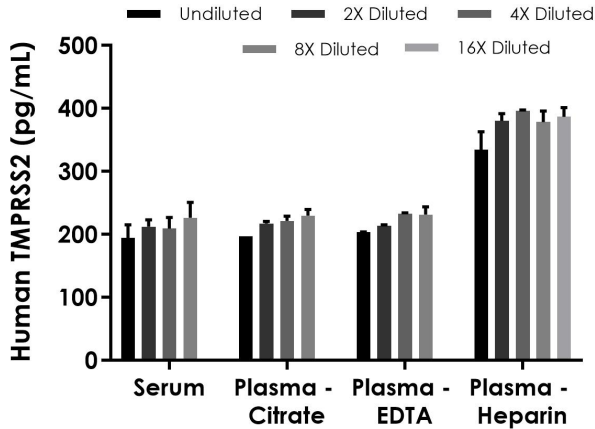


Figure 3. Interpolated concentrations of spike TMPRSS2 in serum, plasma and cell culture supernatant samples. The concentrations of TMPRSS2 were measured in duplicates and interpolated from the TMPRSS2 standard curves. Undiluted samples are as follows: serum 25%, plasma (citrate) 25%, plasma (EDTA) 25%, plasma (heparin) 50%. The interpolated values are plotted (mean +/- SD, n=2).

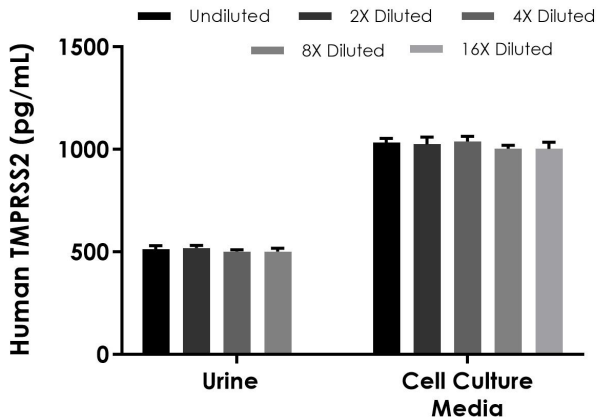


Figure 4. Interpolated concentrations of spike TMPRSS2 in 50% urine and 100% cell culture supernatant samples. The concentrations of TMPRSS2 were measured in duplicate and interpolated from the TMPRSS2 standard curves. The interpolated values are plotted (mean +/- SD, n=2).

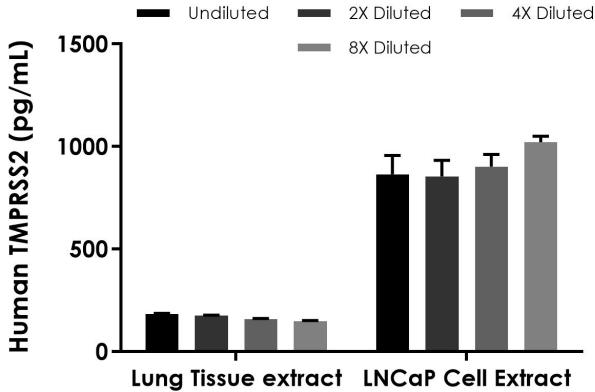


Figure 5. Interpolated concentrations of native TMPRSS2 in human lung tissue extract and LNCaP cell extract based on 2,000 µg/mL and 300 µg/ml extract loads, respectively. The concentrations of TMPRSS2 were measured in duplicate and interpolated from the TMPRSS2 standard curve and corrected for sample dilution. The interpolated dilution factor corrected values are plotted (mean +/- SD, n=2). The mean TMPRSS2 concentration was determined to be 166.86 pg/ml in human lung tissue extract and 909.11 pg/mL in LNCaP cell extract.

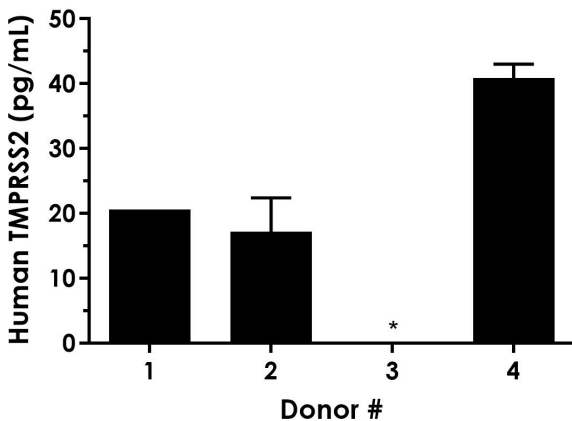


Figure 6. 100% Urine from 4 bladder cancer patients was measured in duplicate. Interpolated values are plotted (mean +/- SD, n+2). The mean native TMPRSS2 concentration was determined to be 20.27 pg/ml. *Undetected.

17. Assay Specificity

This kit recognizes both native and recombinant human TMPRSS2 protein in serum, plasma, and cell culture supernatant, cell and tissue extract samples only.

The protein standard corresponds to a 149 amino acid region of TMPRSS2 extracellular domain.

Cerebrospinal Fluid and saliva samples have not been tested with this kit.

This kit is incompatible with human milk samples.

18. Species Reactivity

This kit recognizes human TMPRSS2 protein.

Other species reactivity not determined.

Please contact our Technical Support team for more information.

19. Troubleshooting

Problem	Reason	Solution
Poor standard curve	Inaccurate Pipetting	Check pipettes
	Improper standard dilution	Prior to opening, briefly spin the stock standard tube and dissolve the powder thoroughly by gentle mixing
Low Signal	Incubation times too brief	Ensure sufficient incubation times; increase to 2 or 3 hour standard/sample incubation
	Inadequate reagent volumes or improper dilution	Check pipettes and ensure correct preparation
	Incubation times with TMB too brief	Ensure sufficient incubation time until blue color develops prior addition of Stop solution
Large CV	Plate is insufficiently washed	Review manual for proper wash technique. If using a plate washer, check all ports for obstructions.
	Contaminated wash buffer	Prepare fresh wash buffer
Low sensitivity	Improper storage of the ELISA kit	Store your reconstituted standards at -80°C, all other assay components 4°C. Keep TMB Development Solution protected from light.
Precipitate in Diluent	Precipitation and/or coagulation of components within the Diluent.	Precipitate can be removed by gently warming the Diluent to 37°C.

20. Notes

Technical Support

Copyright © 2021 Abcam, All Rights Reserved. The Abcam logo is a registered trademark. All information / detail is correct at time of going to print.

For all technical or commercial enquiries please go to:

www.abcam.com/contactus

www.abcam.cn/contactus (China)

www.abcam.co.jp/contactus (Japan)